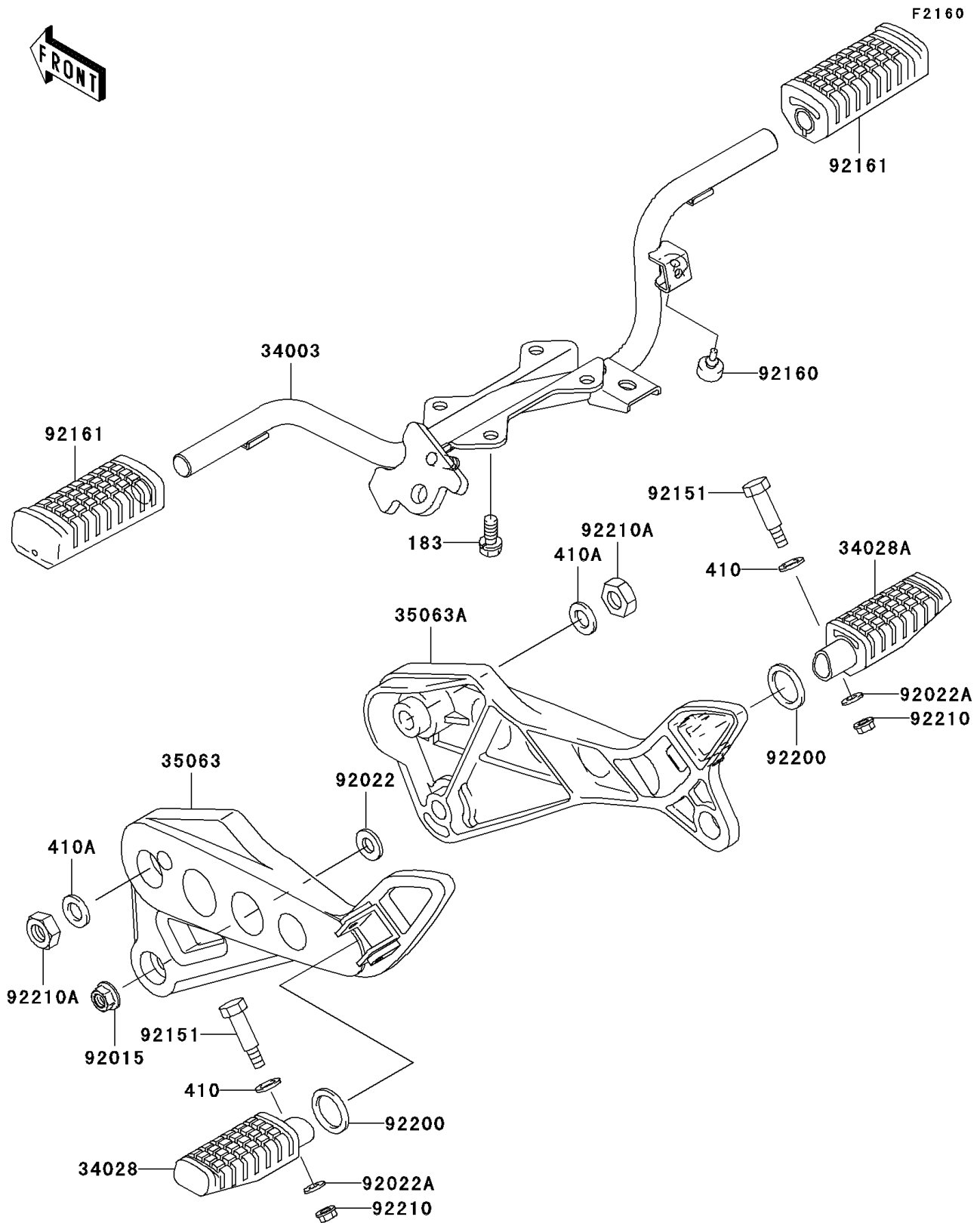


2008 AN112 PARTS DIAGRAM

Footrests



2008 AN112 PARTS LIST

Footrests

| ITEM NAME | PART NUMBER | QUANTITY |
|--|---------------|----------|
| BOLT-UPSET-WS-SMALL,8X20 (Ref # 183) | 183BA0820 | 4 |
| WASHER-PLAIN-SMALL,8MM (Ref # 410) | 410AA0800 | 2 |
| WASHER-PLAIN-SMALL,12MM,BLACK (Ref # 410A) | 410AB1200 | 2 |
| HOLDER-STEP,FR (Ref # 34003) | 34003-0035 | 1 |
| STEP,RR,LH (Ref # 34028) | 34028-1437 | 1 |
| STEP,RR,RH (Ref # 34028A) | 34028-1438 | 1 |
| STAY,RR,LH,SILVER (Ref # 35063) | 35063-0297-CE | 1 |
| STAY,RR,RH,SILVER (Ref # 35063A) | 35063-0298-CE | 1 |
| NUT,FLANGED,10MM (Ref # 92015) | 92015-1428 | 1 |
| WASHER (Ref # 92022) | 92022-100 | 1 |
| WASHER,6.5X16X2 (Ref # 92022A) | 92022-1565 | 2 |
| BOLT (Ref # 92151) | 92151-1194 | 2 |
| DAMPER,BRAKE STOPPER (Ref # 92160) | 92160-1821 | 1 |
| DAMPER,STEP RUBBER (Ref # 92161) | 92161-1251 | 2 |
| WASHER,19.5X28X2 (Ref # 92200) | 92200-0185 | 2 |
| NUT,LOCK,FLANGED,6MM (Ref # 92210) | 92210-0181 | 2 |
| NUT,12MM (Ref # 92210A) | 92210-0182 | 2 |