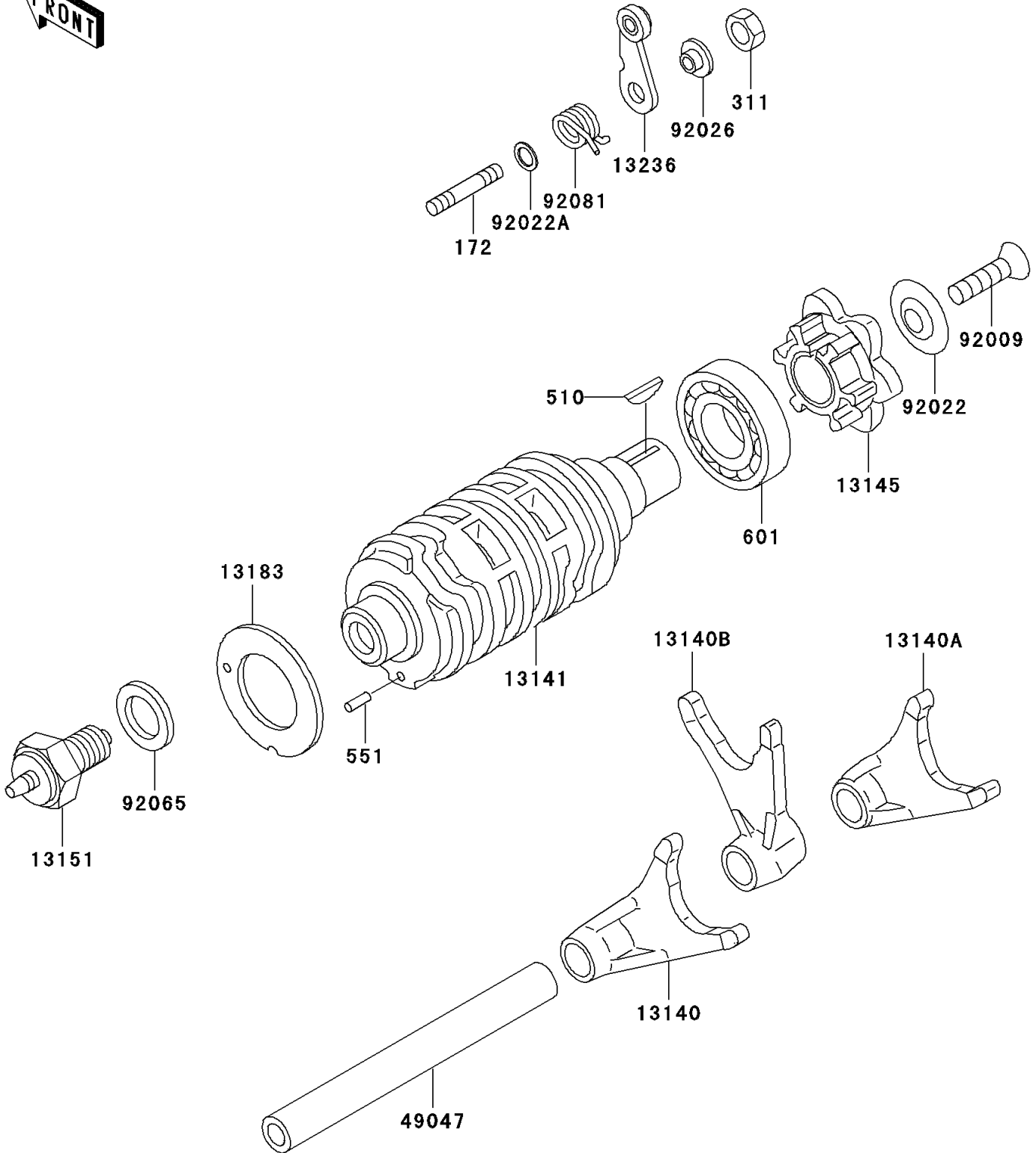


2004 Eliminator 125 PARTS DIAGRAM

Gear Change Drum/Shift Fork(s)

E1362



2004 Eliminator 125 PARTS LIST

Gear Change Drum/Shift Fork(s)

| ITEM NAME | PART NUMBER | QUANTITY |
|--|-------------|----------|
| BOLT-STUD,6X12 (Ref # 172) | 172G0612 | 1 |
| NUT-HEX,6MM (Ref # 311) | 311G0600 | 1 |
| KEY-WOODRUFF (Ref # 510) | 510A3200 | 1 |
| PIN-DOWEL,3X6 (Ref # 551) | 551A0306 | 1 |
| BEARING-BALL (Ref # 601) | 601B6003 | 1 |
| FORK-SHIFT,2ND-4TH (Ref # 13140) | 13140-1247 | 1 |
| FORK-SHIFT,LOW-3RD (Ref # 13140A) | 13140-1264 | 1 |
| FORK-SHIFT,5TH-TOP (Ref # 13140B) | 13140-1265 | 1 |
| DRUM-CHANGE (Ref # 13141) | 13141-1210 | 1 |
| CAM-CHANGE DRUM (Ref # 13145) | 13145-1084 | 1 |
| SWITCH-COMP,NEUTRAL (Ref # 13151) | 13151-1080 | 1 |
| PLATE,CHANGE (Ref # 13183) | 13183-1066 | 1 |
| LEVER-COMP,DRUM POSITION (Ref # 13236) | 13236-1192 | 1 |
| ROD-SHIFT (Ref # 49047) | 49047-1068 | 1 |
| SCREW,6X16 (Ref # 92009) | 92009-1360 | 1 |
| WASHER (Ref # 92022) | 92022-1792 | 1 |
| WASHER,6X12.8X1.2 (Ref # 92022A) | 92022-1827 | 1 |
| SPACER (Ref # 92026) | 92026-1217 | 1 |
| GASKET,10.5X16X1 (Ref # 92065) | 92065-058 | 1 |
| SPRING,POSITION LEVER (Ref # 92081) | 92081-1993 | 1 |