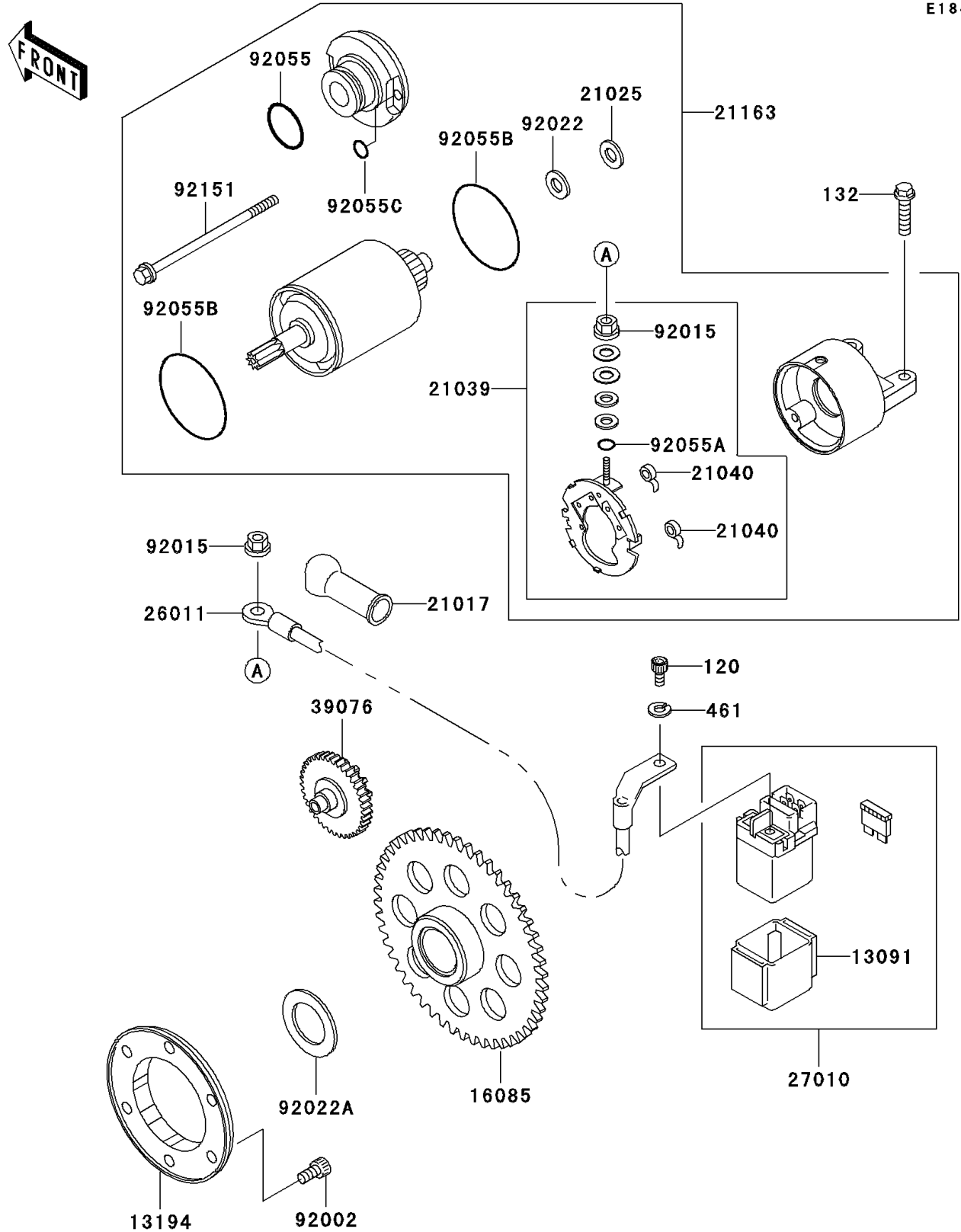


2003 Eliminator 125 (Canada Only) PARTS DIAGRAM

Starter Motor

E1840



2003 Eliminator 125 (Canada Only) PARTS LIST

Starter Motor

ITEM NAME	PART NUMBER	QUANTITY
BOLT-SOCKET (Ref # 120)	120S0510	2
BOLT-FLANGED-SMALL (Ref # 132)	132V0625	2
WASHER-SPRING,5MM,BLACK (Ref # 461)	461K0500	2
HOLDER,MAGNETIC SWITCH (Ref # 13091)	13091-1884	1
CLUTCH-ONEWAY (Ref # 13194)	13194-1107	1
GEAR,60T (Ref # 16085)	16085-0020	1
GROMMET,STARTER TERMINAL (Ref # 21017)	21017-017	1
WASHER,9.1X18X0.2 (Ref # 21025)	21025-011	AR
BRUSH (Ref # 21039)	21039-1066	1
SPRING-BRUSH (Ref # 21040)	21040-1057	2
STARTER-ELECTRIC (Ref # 21163)	21163-1278	1
WIRE-LEAD,STARTER (Ref # 26011)	26011-1682	1
SWITCH,MAGNETIC (Ref # 27010)	27010-1327	1
LIMITER,STARTER IDLE (Ref # 39076)	39076-1060	1
BOLT,SOCKET,6X12 (Ref # 92002)	92002-1796	6
NUT,STARTER MOTOR (Ref # 92015)	92015-1476	2
WASHER,9.1X18X0.8 (Ref # 92022)	92022-1132	1
WASHER,22.3X35X1.6 (Ref # 92022A)	92022-212	1
RING-O (Ref # 92055)	92055-1276	1
RING-O,4.5X2.0 (Ref # 92055A)	92055-1370	1
RING-O (Ref # 92055B)	92055-1550	2
RING-O (Ref # 92055C)	92055-1551	2
BOLT (Ref # 92151)	92151-1158	2