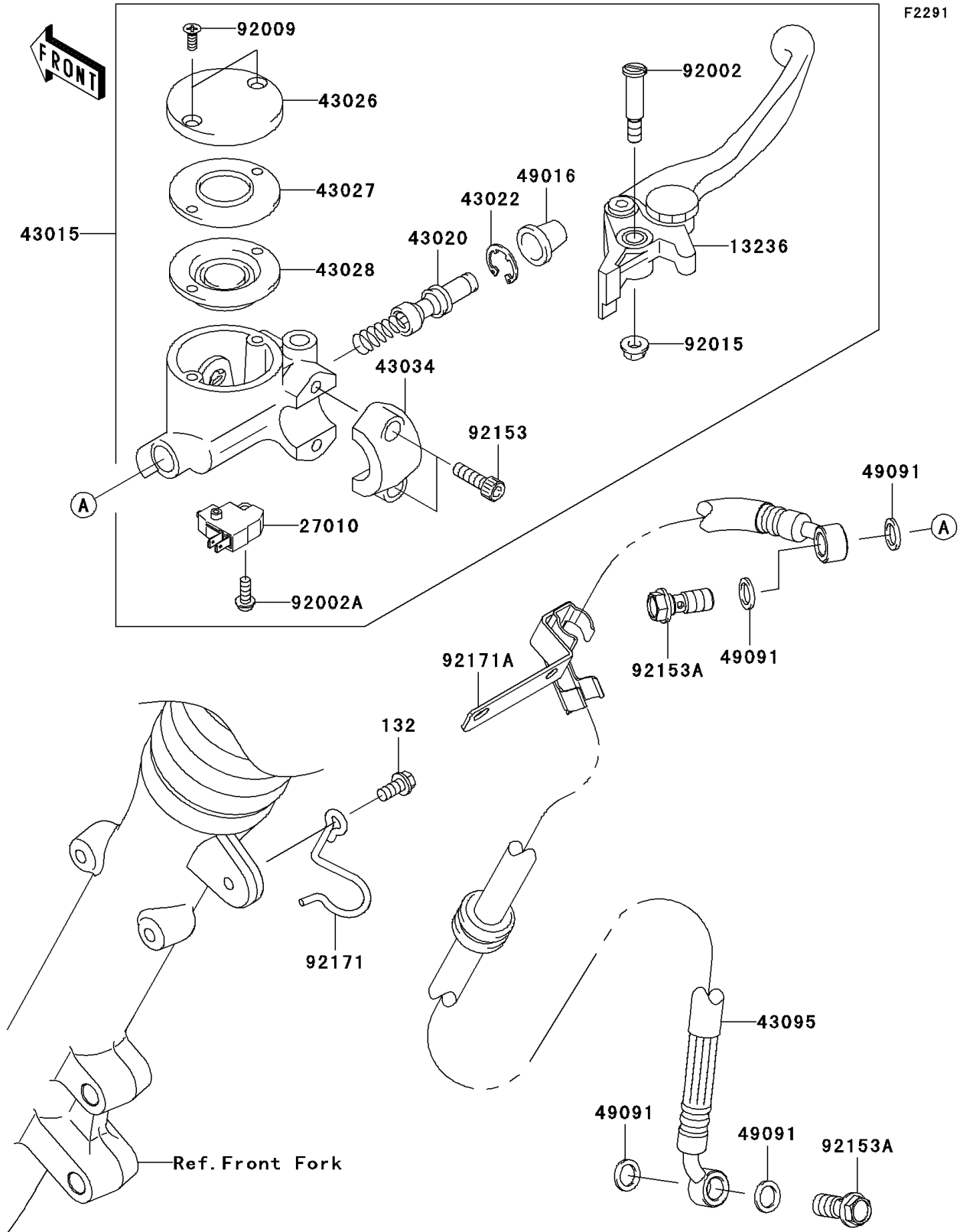


# 2011 W800 (European) PARTS DIAGRAM

## Front Master Cylinder



## 2011 W800 (European) PARTS LIST

### Front Master Cylinder

ITEM NAME	PART NUMBER	QUANTITY
BOLT-FLANGED-SMALL,6X12 (Ref # 132)	132E0612	1
LEVER-COMP,FRONT BRAKE (Ref # 13236)	13236-1221	1
SWITCH,BRAKE (Ref # 27010)	27010-0025	1
CYLINDER-ASSY-MASTER,FR (Ref # 43015)	43015-0162	1
PISTON-COMP-BRAKE (Ref # 43020)	43020-1098	1
STOPPER-BRAKE,PISTON (Ref # 43022)	43022-1010	1
CAP-BRAKE (Ref # 43026)	43026-0024	1
PLATE-DIAPHRAGM (Ref # 43027)	43027-1058	1
DIAPHRAGM (Ref # 43028)	43028-1087	1
HOLDER-BRAKE (Ref # 43034)	43034-0065	1
HOSE-BRAKE,FR (Ref # 43095)	43095-0590	1
COVER-SEAL,MASTER CYLINDER (Ref # 49016)	49016-1044	1
WASHER-SEAL,10.1X14.5X1.5 (Ref # 49091)	49091-0001	4
BOLT,LEVER SET,BLACK (Ref # 92002)	92002-1322	1
BOLT,SCREW,4X12 (Ref # 92002A)	92002-1323	1
SCREW,4MM (Ref # 92009)	92009-1458	2
NUT,FLANGED,6MM (Ref # 92015)	92015-1528	1
BOLT,SOCKET,6X20 (Ref # 92153)	92153-0417	2
BOLT,OIL,L=23 (Ref # 92153A)	92153-0627	2
CLAMP,RH,HOSE (Ref # 92171)	92171-0098	1
CLAMP (Ref # 92171A)	92171-1143	1