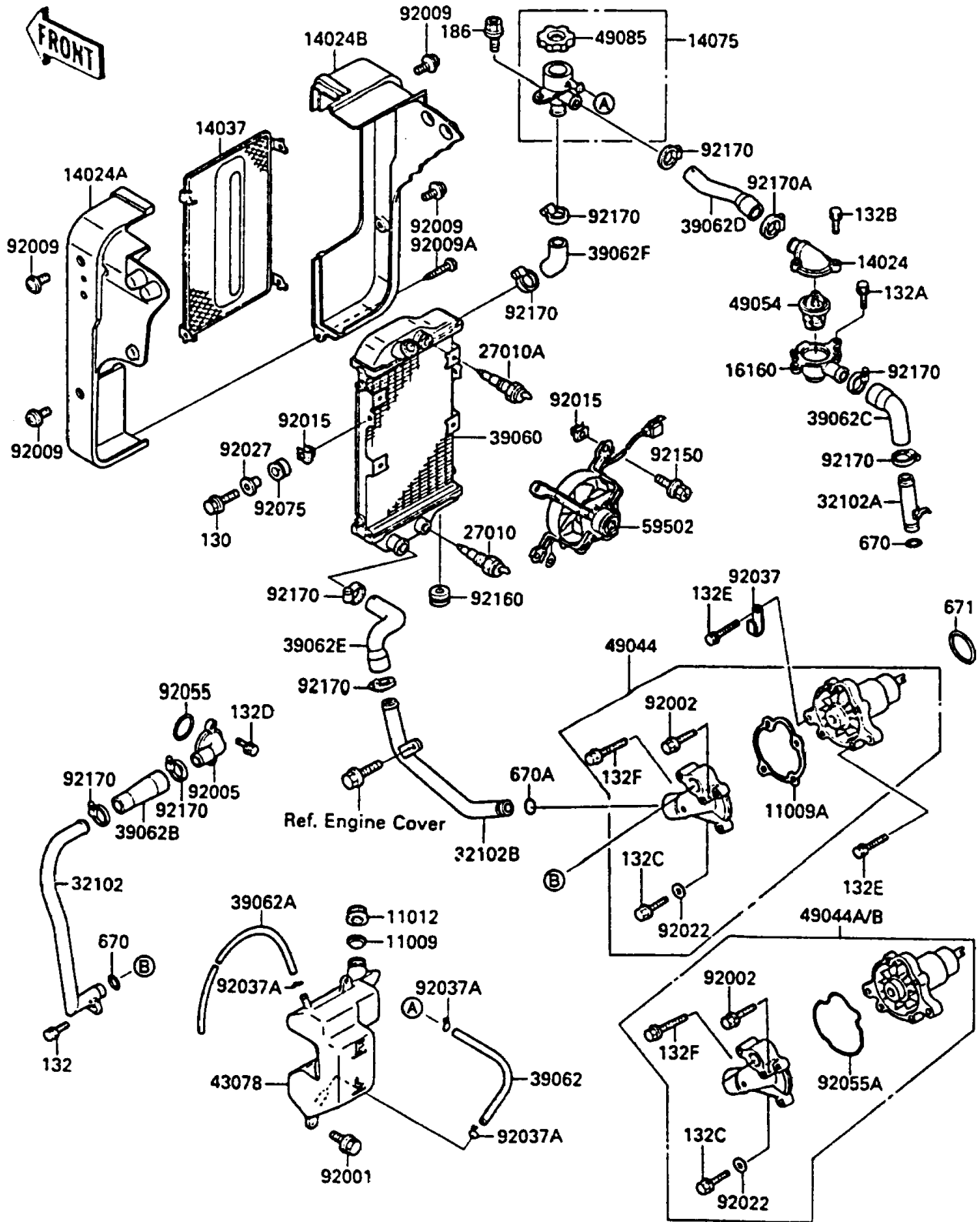


# 1989 Eliminator PARTS DIAGRAM

Radiator

E3032-0061



# 1989 Eliminator PARTS LIST

## Radiator

ITEM NAME	PART NUMBER	QUANTITY
GASKET,RESERVOIR TANK CAP (Ref # 11009)	11009-1145	1
CAP (Ref # 11012)	11012-1084	1
COVER,THERMOSTAT UPP (Ref # 14024)	14024-1232	1
COVER,LH (Ref # 14024A)	14024-1568	1
COVER,RH (Ref # 14024B)	14024-1569	1
SCREEN (Ref # 14037)	14037-1093	1
CAP-ASSY,RADIATOR (Ref # 14075)	14075-1072	1
BODY,THERMOSTAT (Ref # 16160)	16160-1139	1
SWITCH,FAN (Ref # 27010)	27010-1167	1
SWITCH,SENSOR WATER (Ref # 27010A)	27010-1239	1
PIPE,HEAD-THERMOSTAT (Ref # 32102A)	32102-1021	1
PIPE,RADIATOR-PUMP (Ref # 32102B)	32102-1625	1
RADIATOR (Ref # 39060)	39060-1079	1
HOSE-COOLING,5.5X10.5X950 (Ref # 39062)	39062-1069	1
HOSE-COOLING,5.5X10.5X300 (Ref # 39062A)	39062-1110	1
HOSE-COOLING,PUMP-CYLINDER (Ref # 39062B)	39062-1169	1
HOSE-COOLING,HEAD-THERMOSTAT (Ref # 39062C)	39062-1170	1
HOSE-COOLING,THERMOSTAT-CAP (Ref # 39062D)	39062-1247	1
HOSE-COOLING,RADIATOR-PUMP (Ref # 39062E)	39062-1248	1
HOSE-COOLING,CAP-RADIATOR (Ref # 39062F)	39062-1249	1
RESERVOIR (Ref # 43078)	43078-1088	1
PUMP-WATER (Ref # 49044A)	49044-1064	1
THERMOSTAT (Ref # 49054)	49054-1058	1
CAP-ASSY-PRESSURE (Ref # 49085)	49085-1057	1
FAN-ASSY (Ref # 59502)	59502-1073	1
BOLT,W/WASHER,6X12 (Ref # 92001)	92001-1516	2
BOLT,6X18 (Ref # 92002)	92002-1806	3
FITTING,CYLINDER (Ref # 92005)	92005-1145	1
SCREW,6X10 (Ref # 92009)	92009-1402	4

# 1989 Eliminator PARTS LIST

## Radiator

ITEM NAME	PART NUMBER	QUANTITY
SCREW,TAPPING,5X30 (Ref # 92009A)	92009-1488	1
NUT (Ref # 92015)	92015-1487	6
WASHER,6MM (Ref # 92022)	92022-1627	1
COLLAR (Ref # 92027)	92027-1767	2
CLAMP,WIRING HARNESS (Ref # 92037)	21126-008	1
CLAMP,TUBE (Ref # 92037A)	92037-147	3
RING-O (Ref # 92055)	92055-091	1
RING-O (Ref # 92055A)	92055-1432	1
DAMPER (Ref # 92075)	92075-1680	2
BOLT,6X12 (Ref # 92150)	92150-1186	4
DAMPER (Ref # 92160)	92160-1007	1
CLAMP,COOLING HOSE (Ref # 92170)	92170-1033	9
CLAMP,COOLING HOSE (Ref # 92170A)	92170-1034	1
BOLT-FLANGED,6X25 (Ref # 130)	130J0625	2
BOLT-FLANGED-SMALL (Ref # 132)	132E0612	1
BOLT-FLANGED-SMALL (Ref # 132A)	132G0612	2
BOLT-FLANGED-SMALL (Ref # 132B)	132G0625	2
BOLT-FLANGED-SMALL (Ref # 132C)	132J0612	1
BOLT-FLANGED-SMALL (Ref # 132D)	132J0616	2
BOLT-FLANGED-SMALL (Ref # 132E)	132J0630	2
BOLT-FLANGED-SMALL (Ref # 132F)	132J0635	1
BOLT-UPSET-WP (Ref # 186)	186C0614	1
O RING,16MM (Ref # 670)	670B2016	2
O RING,18MM (Ref # 670A)	670B2018	1
O RING (Ref # 671)	671D2535	1