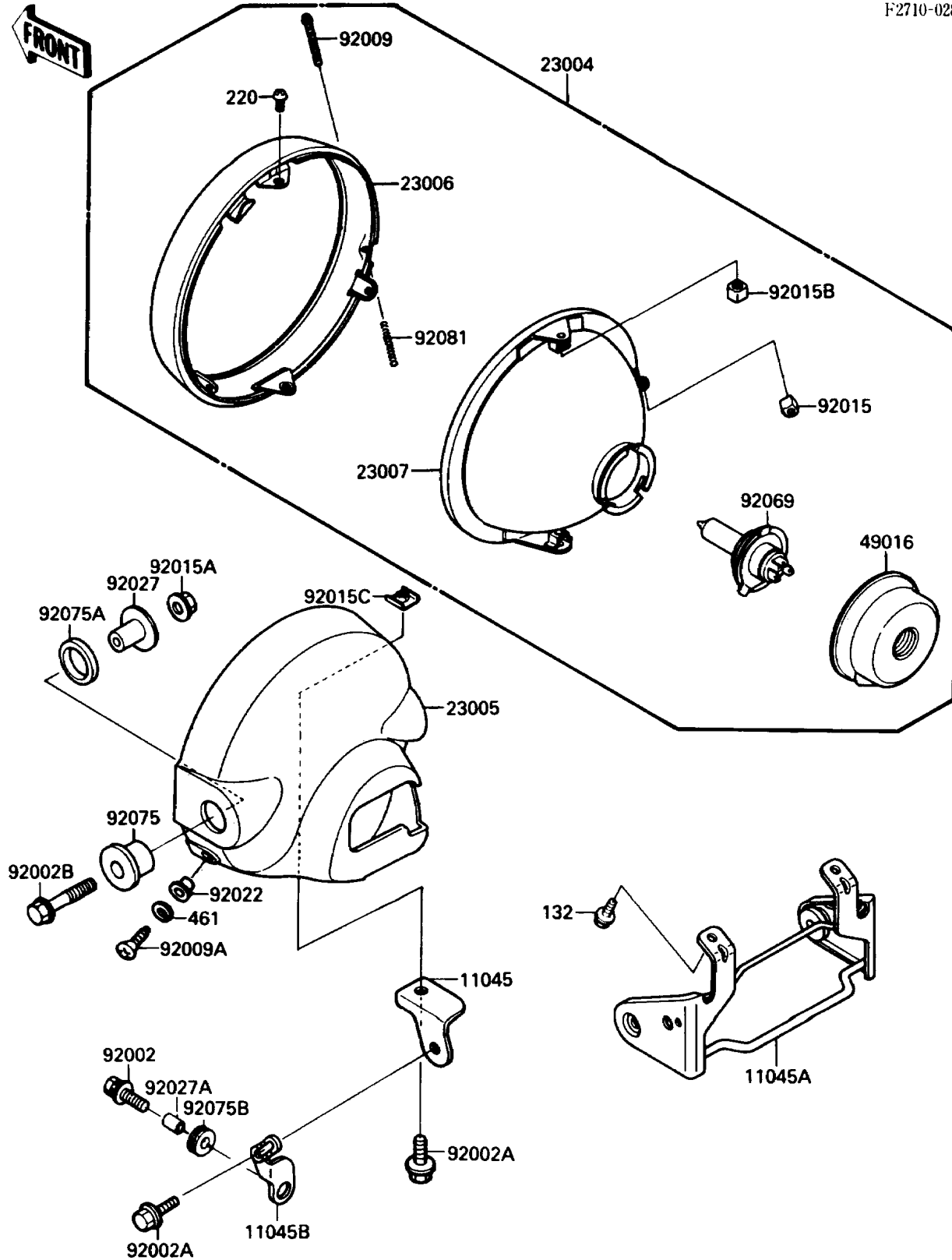


# 1989 Eliminator PARTS DIAGRAM

Headlight(s)

F2710-0283



# 1989 Eliminator PARTS LIST

## Headlight(s)

| ITEM NAME                                   | PART NUMBER | QUANTITY |
|---|-------------|----------|
| BRACKET,HEAD LAMP BODY (Ref # 11045)        | 11045-1215  | 1        |
| BRACKET,HEAD LAMP STAY (Ref # 11045A)       | 11045-1943  | 1        |
| BRACKET,HEAD LAMP,LWR (Ref # 11045B)        | 11045-1970  | 1        |
| LAMP-HEAD (Ref # 23004)                     | 23004-1171  | 1        |
| BODY-COMP-HEAD LAMP,CR PLATED (Ref # 23005) | 23005-1058  | 1        |
| RIM-LAMP (Ref # 23006)                      | 23006-1055  | 1        |
| LENS-COMP,HEAD LAMP (Ref # 23007)           | 23007-1115  | 1        |
| COVER-SEAL,HEAD LAMP (Ref # 49016)          | 49016-1046  | 1        |
| BOLT,6X25 (Ref # 92002)                     | 92002-1137  | 1        |
| BOLT,6X14 (Ref # 92002A)                    | 92002-1260  | 2        |
| BOLT,FLANGED,8X40 (Ref # 92002B)            | 92002-1503  | 2        |
| SCREW,4X52 (Ref # 92009)                    | 92009-1033  | 1        |
| SCREW,5MM (Ref # 92009A)                    | 92011-024   | 2        |
| NUT,4MM,FOCUS ADJUST (Ref # 92015)          | 23020-018   | 1        |
| NUT,FLANGED,8MM (Ref # 92015A)              | 92015-1014  | 2        |
| NUT,5MM (Ref # 92015B)                      | 92015-1157  | 2        |
| NUT,6MM,HEAD LAMP (Ref # 92015C)            | 92015-1231  | 1        |
| WASHER (Ref # 92022)                        | 23021-010   | 2        |
| COLLAR,L=20 (Ref # 92027)                   | 92027-1131  | 2        |
| COLLAR,6.8X10X12 (Ref # 92027A)             | 92027-162   | 1        |
| BULB,12V 60/55W,H4 (Ref # 92069)            | 92069-1002  | 1        |
| DAMPER,HEAD LAMP FITTING (Ref # 92075)      | 92075-1109  | 2        |
| DAMPER,HEAD LAMP FITTING (Ref # 92075A)     | 92075-1110  | 2        |
| DAMPER (Ref # 92075B)                       | 92075-209   | 1        |
| SPRING,FOCUS ADJUSTING (Ref # 92081)        | 92081-1701  | 1        |
| BOLT-FLANGED-SMALL (Ref # 132)              | 132E0616    | 2        |
| SCREW-PAN-CROS (Ref # 220)                  | 220B0510    | 2        |
| WASHER-SPRING,5MM (Ref # 461)               | 461F0500    | 2        |