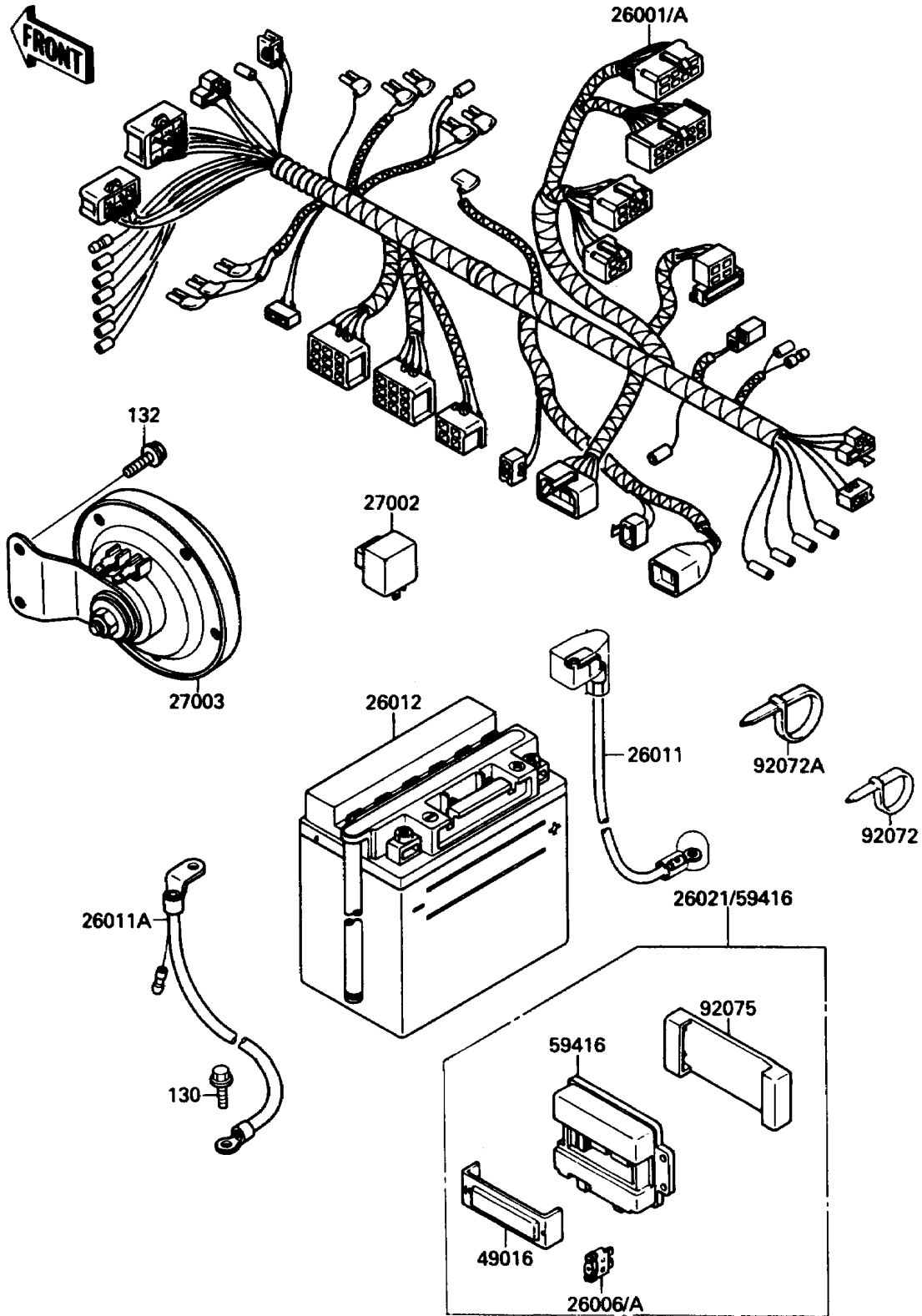


# 1988 Eliminator PARTS DIAGRAM

Chassis Electrical Equipment

F2760-0393



# 1988 Eliminator PARTS LIST

## Chassis Electrical Equipment

| ITEM NAME                                  | PART NUMBER | QUANTITY |
|--|-------------|----------|
| HARNESS,MAIN (Ref # 26001)                 | 26001-1867  | 1        |
| FUSE,30A-G (Ref # 26006)                   | 26006-1006  | 1        |
| FUSE,10A-R (Ref # 26006A)                  | 26006-1007  | 4        |
| WIRE-LEAD,BATTERY(+) (Ref # 26011)         | 26011-1401  | 1        |
| WIRE-LEAD,BATTERY(-) (Ref # 26011A)        | 26011-1402  | 1        |
| BATTERY,12V 8AH,FB9L-A2K(K2) (Ref # 26012) | 26012-1205  | 1        |
| RELAY-ASSY,TURN SIGNAL (Ref # 27002)       | 27002-1053  | 1        |
| HORN (Ref # 27003)                         | 27003-1275  | 1        |
| COVER-SEAL,FUSE (Ref # 49016)              | 49016-1124  | 1        |
| CASE-ELECTRIC,JUNCTION BOX (Ref # 59416)   | 59416-1058  | 1        |
| BAND,L=185 (Ref # 92072)                   | 92072-1195  | 7        |
| BAND,L=185 (Ref # 92072)                   | 92072-1195  | 9        |
| BAND,L=365 (Ref # 92072A)                  | 92072-1197  | 5        |
| BAND,L=365 (Ref # 92072A)                  | 92072-1197  | 3        |
| DAMPER,JUNCTION BOX (Ref # 92075)          | 92075-1688  | 1        |
| BOLT-FLANGED,6X12 (Ref # 130)              | 130B0612    | 1        |
| BOLT-FLANGED-SMALL (Ref # 132)             | 132E0610    | 2        |