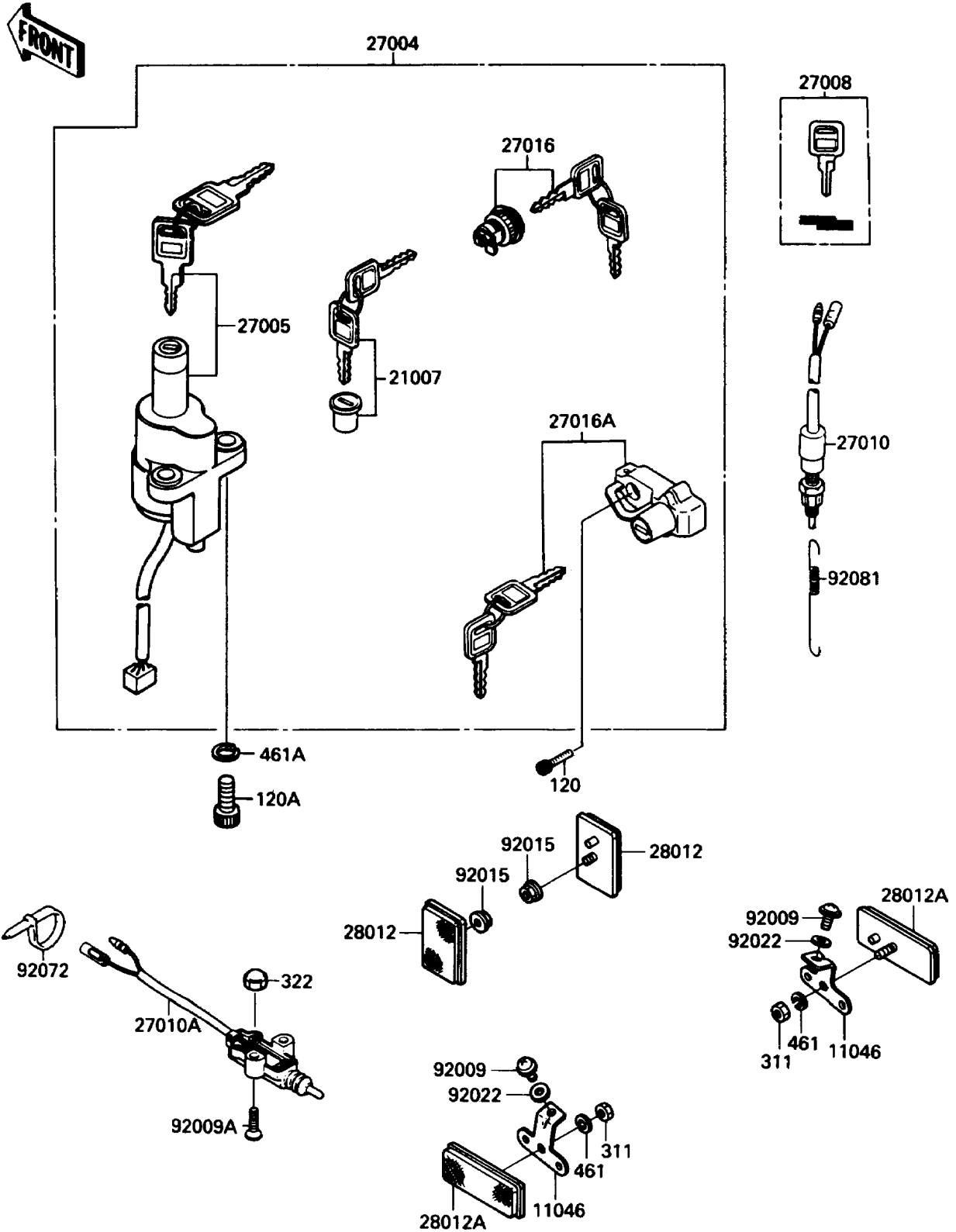


1988 Eliminator PARTS DIAGRAM

Ignition Switch/Locks/Reflectors

F2770-0337



1988 Eliminator PARTS LIST

Ignition Switch/Locks/Reflectors

ITEM NAME	PART NUMBER	QUANTITY
BRACKET,REFLECTOR (Ref # 11046)	11045-1989	2
ROTOR,LOCK,TANK CAP (Ref # 21007)	21007-5005	1
SWITCH-ASSY (Ref # 27004)	27004-5332	1
SWITCH-ASSY-IGNITION (Ref # 27005)	27005-5076	1
KEY-LOCK,BLANK (Ref # 27008)	27008-1103	1
SWITCH,BRAKE LAMP (Ref # 27010)	27010-1152	1
SWITCH,SIDE STAND (Ref # 27010A)	27010-1223	1
LOCK-ASSY,TOOL BOX (Ref # 27016)	27016-5136	1
LOCK-ASSY,HELMET (Ref # 27016A)	27016-5137	1
REFLECTOR-REFLEX (Ref # 28012)	28012-1003	2
REFLECTOR-REFLEX (Ref # 28012A)	28012-1057	2
SCREW,6X14,BLACK (Ref # 92009)	92009-1308	2
SCREW,5X20 (Ref # 92009A)	92009-1459	2
NUT,FLANGED,5MM (Ref # 92015)	92015-1259	2
WASHER,6.5X16X1 (Ref # 92022)	92022-1143	2
BAND,L=185 (Ref # 92072)	92072-1195	1
SPRING,BRAKE LAMP SWITCH (Ref # 92081)	92081-1146	1
BOLT-SOCKET,6X20 (Ref # 120)	120S0620	1
BOLT-SOCKET (Ref # 120A)	120T0822	2
NUT-HEX (Ref # 311)	311B0500	2
NUT-CAP (Ref # 322)	322C0500	2
WASHER-SPRING,5MM (Ref # 461)	461F0500	3
WASHER-SPRING (Ref # 461A)	461L0800	2