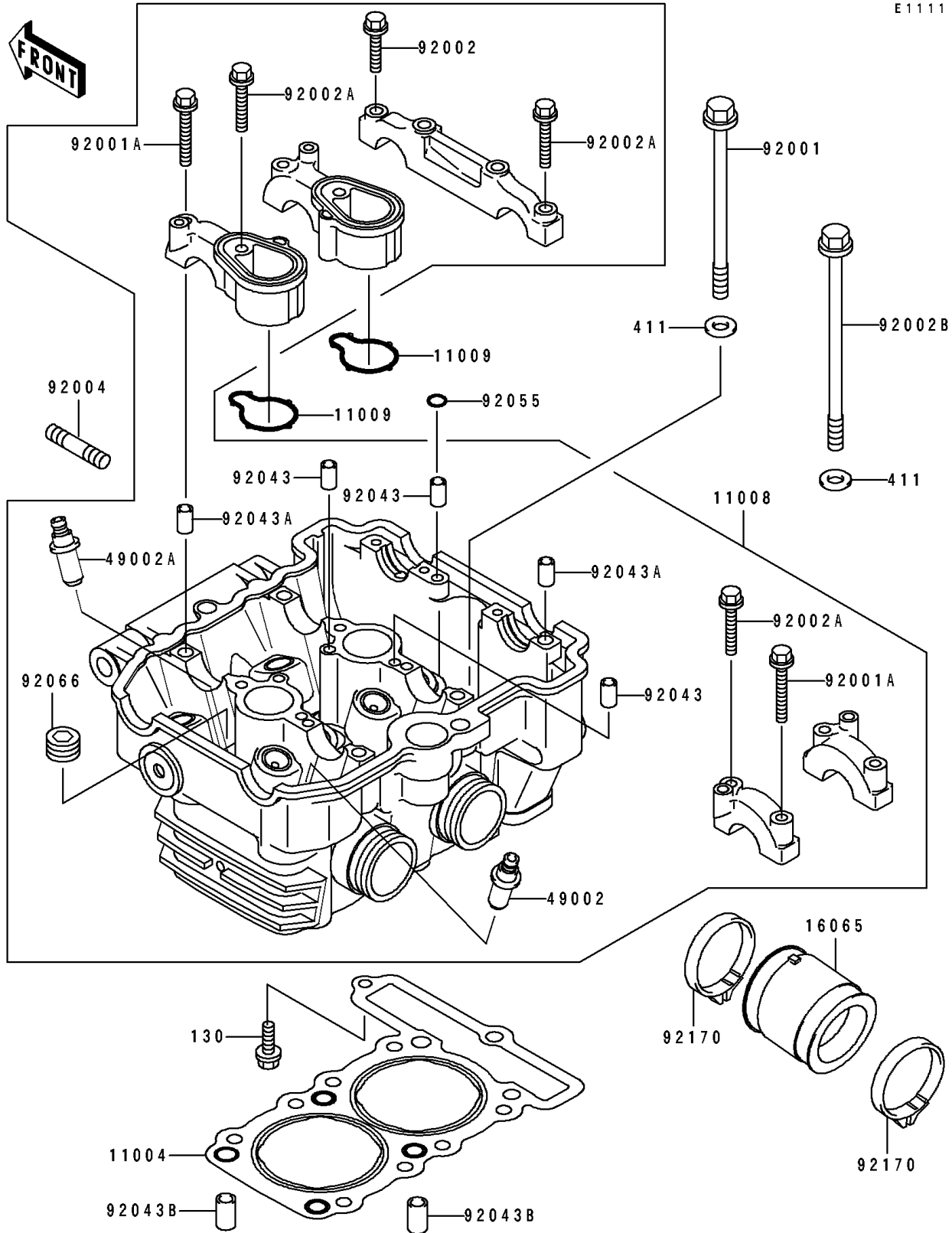


1994 Eliminator 250 PARTS DIAGRAM

Cylinder Head

E1111



1994 Eliminator 250 PARTS LIST

Cylinder Head

| ITEM NAME | PART NUMBER | QUANTITY |
|---------------------------------------|-------------|----------|
| GASKET-HEAD (Ref # 11004) | 11004-1207 | 1 |
| HEAD-COMP-CYLINDER (Ref # 11008) | 11008-1201 | 1 |
| GASKET,CAMSHAFT BRACKET (Ref # 11009) | 11009-1573 | 2 |
| HOLDER-CARBURETOR (Ref # 16065) | 16065-1158 | 2 |
| GUIDE-VALVE,INTAKE (Ref # 49002) | 49002-1070 | 4 |
| GUIDE-VALVE,EXHAUST (Ref # 49002A) | 49002-1071 | 4 |
| BOLT,8X115 (Ref # 92001) | 92001-1481 | 1 |
| BOLT,6X46 (Ref # 92001A) | 92001-1872 | 4 |
| BOLT,6X30 (Ref # 92002) | 92002-1755 | 1 |
| BOLT,6X40 (Ref # 92002A) | 92002-1756 | 7 |
| BOLT,8X146 (Ref # 92002B) | 92002-1832 | 6 |
| STUD,6X22 (Ref # 92004) | 92004-059 | 4 |
| PIN,4.2X6X12 (Ref # 92043) | 92043-1262 | 5 |
| PIN,6.2X8X14 (Ref # 92043A) | 92043-1263 | 5 |
| PIN,8.2X10X14 (Ref # 92043B) | 92043-1264 | 2 |
| RING-O,5.5X1.5 (Ref # 92055) | 92055-1339 | 1 |
| PLUG (Ref # 92066) | 92066-1253 | 3 |
| CLAMP (Ref # 92170) | 92170-1438 | 4 |
| BOLT-FLANGED,6X25 (Ref # 130) | 130J0625 | 1 |
| WASHER-PLAIN,8MM (Ref # 411) | 411B0800 | 7 |