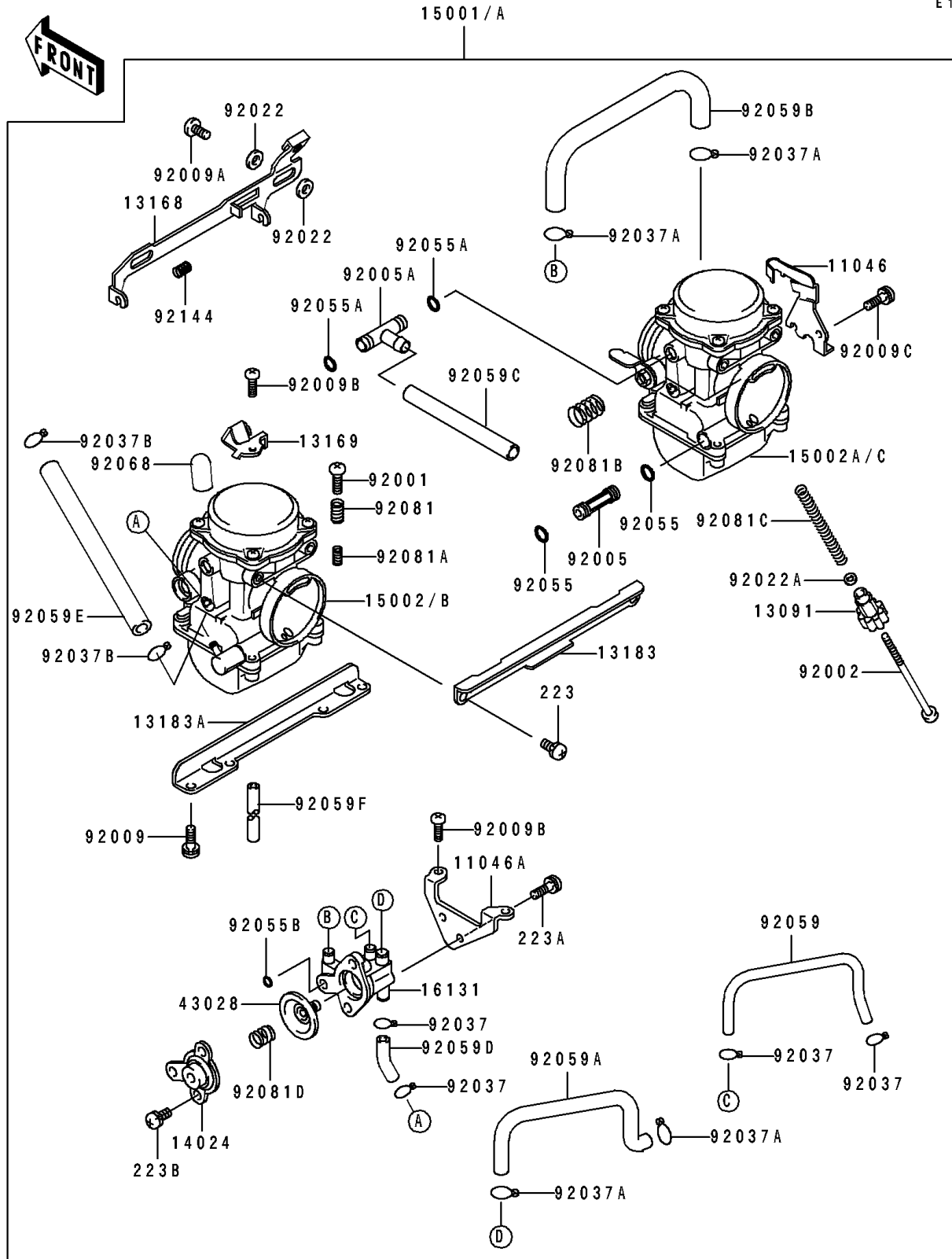


1991 Eliminator 250 PARTS DIAGRAM

Carburetor

E1611



1991 Eliminator 250 PARTS LIST

Carburetor

ITEM NAME	PART NUMBER	QUANTITY
BRACKET,THROTTLE CABLE (Ref # 11046)	11046-1081	1
BRACKET,AIR CUT VALVE (Ref # 11046A)	11046-1082	1
HOLDER,THROTTLE STOP SCREW (Ref # 13091)	13091-1382	1
LEVER,STARTER (Ref # 13168)	13168-1330	1
PLATE,STARTER CABLE (Ref # 13169)	13169-1965	1
PLATE,CARBURETOR STAY,UPP (Ref # 13183)	13183-1029	1
PLATE,CARBURETOR STAY,LWR,6MM (Ref # 13183A)	13183-1030	1
COVER,AIR CUT VALVE (Ref # 14024)	14024-1327	1
CARBURETOR-ASSY (Ref # 15001)	15001-1393	1
CARBURETOR-ASSY (Ref # 15001A)	15001-1394	1
CARBURETOR,LH (Ref # 15002)	15002-1584	1
CARBURETOR,RH (Ref # 15002A)	15002-1585	1
CARBURETOR,LH (Ref # 15002B)	15002-1586	1
CARBURETOR,RH (Ref # 15002C)	15002-1587	1
BODY-VALVE,DIAPHRAGM (Ref # 16131)	16131-1062	1
DIAPHRAGM,AIR CUT VALVE (Ref # 43028)	43028-1053	1
BOLT,THROTTLE ADJUST (Ref # 92001)	92001-1998	1
BOLT,THROTTLE STOP SCREW (Ref # 92002)	92002-1552	1
FITTING,FUEL,I-TYPE (Ref # 92005)	92005-1109	1
FITTING,T-TYPE (Ref # 92005A)	92005-1125	1
SCREW,6X16 (Ref # 92009)	92009-1129	4
SCREW (Ref # 92009A)	92009-1262	2
SCREW,4X18 (Ref # 92009B)	92009-1446	3
SCREW (Ref # 92009C)	92009-1510	1
WASHER,6.1X11X0.8,POLYACETAL (Ref # 92022)	92022-1199	4
WASHER,PLAIN,STOP SPRING (Ref # 92022A)	92022-1480	1
CLAMP,TUBE (Ref # 92037)	92037-1142	4
CLAMP,TUBE (Ref # 92037A)	92037-1477	4
CLAMP,TUBE (Ref # 92037B)	92037-1531	2

1991 Eliminator 250 PARTS LIST

Carburetor

ITEM NAME	PART NUMBER	QUANTITY
RING-O (Ref # 92055)	92055-1004	2
RING-O,FUEL FITTING (Ref # 92055A)	92055-1223	2
RING-O (Ref # 92055B)	92055-1245	1
TUBE,3.5X6.5X180 (Ref # 92059)	92059-1140	1
TUBE,5X9X160 (Ref # 92059A)	92059-1201	1
TUBE,5X9X180 (Ref # 92059B)	92059-1377	1
TUBE,6.5X9.5X500 (Ref # 92059C)	92059-1465	1
TUBE,3.5X6.5X26 (Ref # 92059D)	92059-1722	1
TUBE,6.5X11.5X320 (Ref # 92059E)	92059-1892	1
TUBE,3.5X6.5X390 (Ref # 92059F)	92059-1893	2
PLUG,12X25 (Ref # 92068)	92068-006	1
SPRING,THROTTLE ADJUST UPP (Ref # 92081)	92081-1620	1
SPRING,THROTTLE ADJUST LWR (Ref # 92081A)	92081-1621	1
SPRING,THROTTLE ADJUST CNT (Ref # 92081B)	92081-1622	1
SPRING,THROTTLE STOP SCREW (Ref # 92081C)	92081-1875	1
SPRING,AIR CUT VALVE (Ref # 92081D)	92081-1891	1
SPRING,THROTTLE ADJUST UPP (Ref # 92144)	92144-1048	1
SCREW-PAN-WS-CROS (Ref # 223)	223C0510	4
SCREW-PAN-WS-CROS (Ref # 223A)	223D0408	2
SCREW-PAN-WS-CROS (Ref # 223B)	223D0410	2