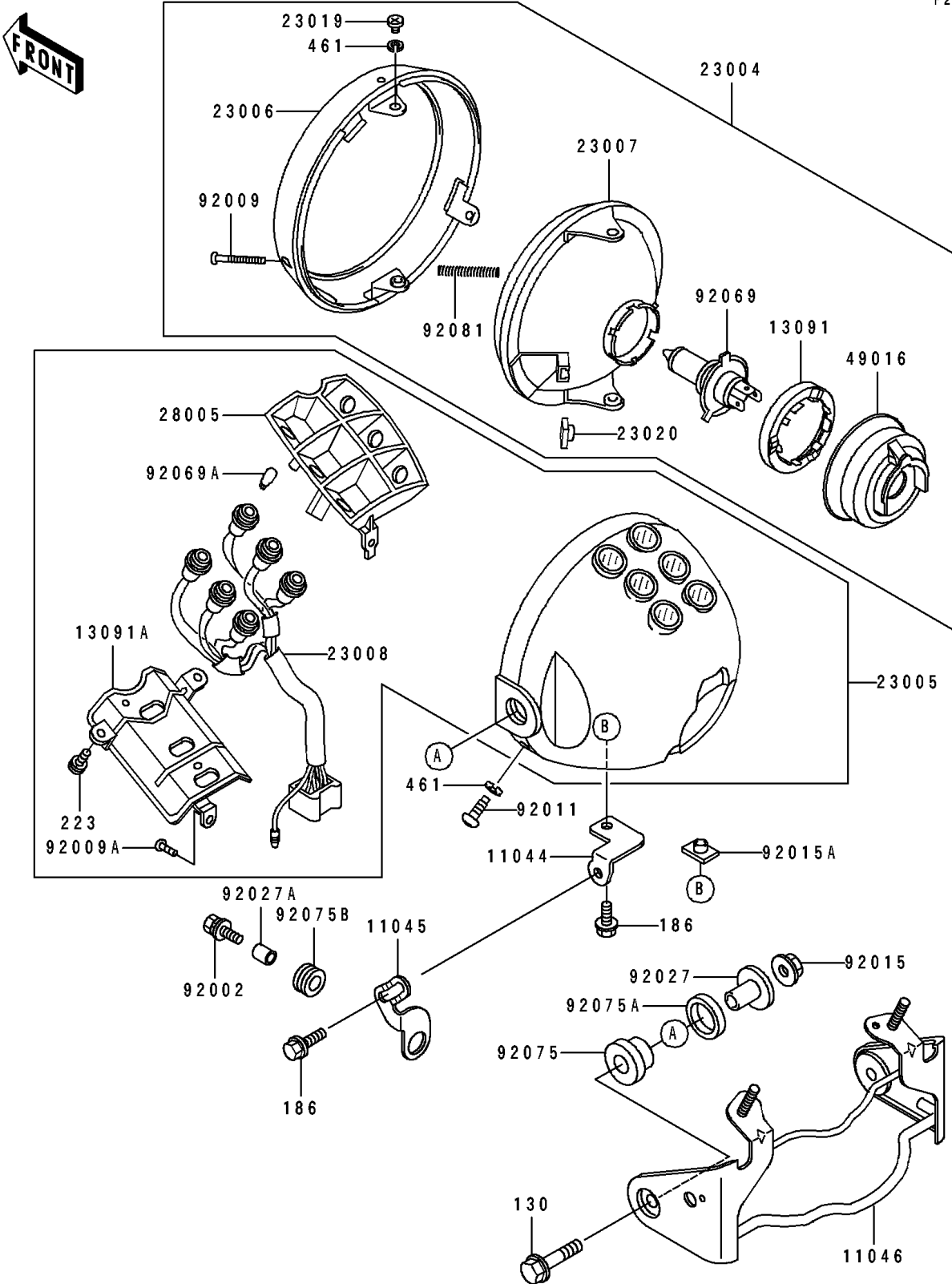


1993 Eliminator 250 PARTS DIAGRAM

Headlight(s)

F2710



1993 Eliminator 250 PARTS LIST

Headlight(s)

| ITEM NAME | PART NUMBER | QUANTITY |
|-------------------------------------------|---------------|----------|
| BRACKET,HEAD LAMP,LWR (Ref # 11044) | 11044-1915 | 1 |
| BRACKET,HEAD LAMP,LWR (Ref # 11045) | 11045-1789 | 1 |
| BRACKET,HEAD LAMP STAY (Ref # 11046) | 11046-1761 | 1 |
| HOLDER,HEAD LAMP SOCKET (Ref # 13091) | 13091-1386 | 1 |
| HOLDER,HEAD LAMP (Ref # 13091A) | 13091-1387 | 1 |
| LAMP-HEAD (Ref # 23004) | 23004-1188 | 1 |
| BODY-COMP-HEAD LAMP,EBONY (Ref # 23005) | 23005-1076-H8 | 1 |
| RIM-LAMP (Ref # 23006) | 23006-1057 | 1 |
| LENS-COMP,HEAD LAMP (Ref # 23007) | 23007-1136 | 1 |
| SOCKET-ASSY,HEAD LAMP (Ref # 23008) | 23008-1316 | 1 |
| SCREW,LENS FITTING (Ref # 23019) | 23019-031 | 2 |
| NUT,ADJUSTING (Ref # 23020) | 23020-012 | 1 |
| BODY-LAMP,INDICATOR (Ref # 28005) | 28005-1053 | 1 |
| COVER-SEAL,HEAD LAMP SOCKET (Ref # 49016) | 49016-1110 | 1 |
| BOLT,6X25 (Ref # 92002) | 92002-1137 | 1 |
| SCREW,FOCUS ADJUST (Ref # 92009) | 92009-1394 | 1 |
| SCREW,TAPPING,4X12 (Ref # 92009A) | 92009-1395 | 1 |
| SCREW,5MM (Ref # 92011) | 92011-024 | 2 |
| NUT,FLANGED,8MM (Ref # 92015) | 92015-1014 | 2 |
| NUT,6MM,HEAD LAMP (Ref # 92015A) | 92015-1231 | 1 |
| COLLAR,L=20 (Ref # 92027) | 92027-1131 | 2 |
| COLLAR,6.8X10X12 (Ref # 92027A) | 92027-162 | 1 |
| BULB,12V 60/55W,H4 (Ref # 92069) | 92069-1002 | 1 |
| BULB,12V3W T-7 (Ref # 92069A) | 92069-1020 | 5 |
| DAMPER,HEAD LAMP FITTING (Ref # 92075) | 92075-1109 | 2 |
| DAMPER,HEAD LAMP FITTING (Ref # 92075A) | 92075-1110 | 2 |
| DAMPER (Ref # 92075B) | 92075-209 | 1 |
| SPRING,FOCUS ADJUST (Ref # 92081) | 92081-1892 | 1 |
| BOLT-FLANGED,8X40 (Ref # 130) | 130C0840 | 2 |

1993 Eliminator 250 PARTS LIST

Headlight(s)

| ITEM NAME | PART NUMBER | QUANTITY |
|-------------------------------|-------------|----------|
| BOLT-UPSET-WP (Ref # 186) | 186C0614 | 2 |
| SCREW-PAN-WS-CROS (Ref # 223) | 223D0410 | 2 |
| WASHER-SPRING,5MM (Ref # 461) | 461F0500 | 4 |