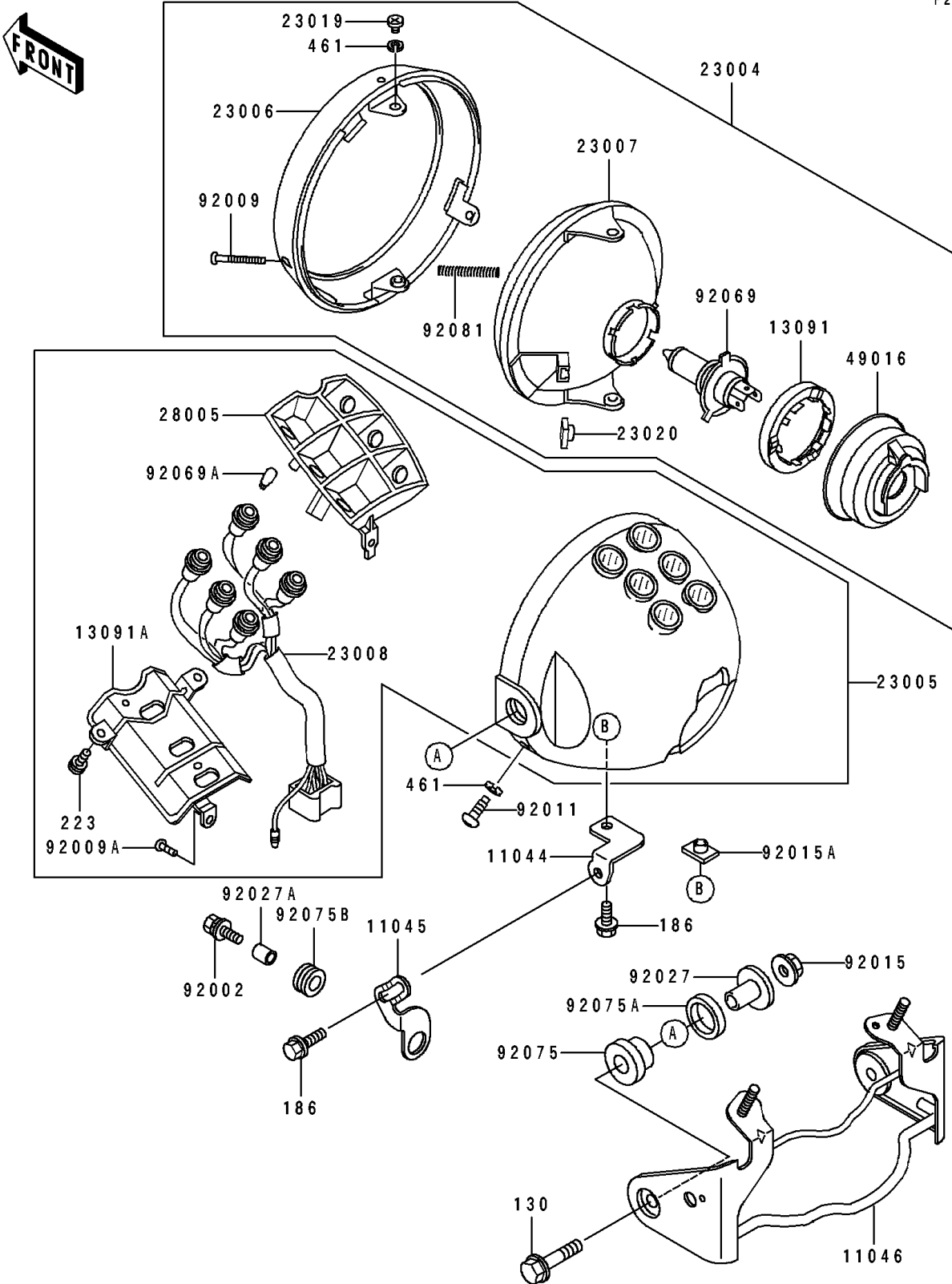


# 1994 Eliminator 250 PARTS DIAGRAM

Headlight(s)

F2710



# 1994 Eliminator 250 PARTS LIST

## Headlight(s)

| ITEM NAME                                 | PART NUMBER   | QUANTITY |
|---|---------------|----------|
| BRACKET,HEAD LAMP,LWR (Ref # 11044)       | 11044-1915    | 1        |
| BRACKET,HEAD LAMP,LWR (Ref # 11045)       | 11045-1789    | 1        |
| BRACKET,HEAD LAMP STAY (Ref # 11046)      | 11046-1761    | 1        |
| HOLDER,HEAD LAMP SOCKET (Ref # 13091)     | 13091-1386    | 1        |
| HOLDER,HEAD LAMP (Ref # 13091A)           | 13091-1387    | 1        |
| LAMP-HEAD (Ref # 23004)                   | 23004-1188    | 1        |
| BODY-COMP-HEAD LAMP,EBONY (Ref # 23005)   | 23005-1076-H8 | 1        |
| RIM-LAMP (Ref # 23006)                    | 23006-1057    | 1        |
| LENS-COMP,HEAD LAMP (Ref # 23007)         | 23007-1136    | 1        |
| SOCKET-ASSY,HEAD LAMP (Ref # 23008)       | 23008-1316    | 1        |
| SCREW,LENS FITTING (Ref # 23019)          | 23019-031     | 2        |
| NUT,ADJUSTING (Ref # 23020)               | 23020-012     | 1        |
| BODY-LAMP,INDICATOR (Ref # 28005)         | 28005-1053    | 1        |
| COVER-SEAL,HEAD LAMP SOCKET (Ref # 49016) | 49016-1110    | 1        |
| BOLT,6X25 (Ref # 92002)                   | 92002-1137    | 1        |
| SCREW,FOCUS ADJUST (Ref # 92009)          | 92009-1394    | 1        |
| SCREW,TAPPING,4X12 (Ref # 92009A)         | 92009-1395    | 1        |
| SCREW,5MM (Ref # 92011)                   | 92011-024     | 2        |
| NUT,FLANGED,8MM (Ref # 92015)             | 92015-1014    | 2        |
| NUT,6MM,HEAD LAMP (Ref # 92015A)          | 92015-1231    | 1        |
| COLLAR,L=20 (Ref # 92027)                 | 92027-1131    | 2        |
| COLLAR,6.8X10X12 (Ref # 92027A)           | 92027-162     | 1        |
| BULB,12V 60/55W,H4 (Ref # 92069)          | 92069-1002    | 1        |
| BULB,12V3W T-7 (Ref # 92069A)             | 92069-1020    | 5        |
| DAMPER,HEAD LAMP FITTING (Ref # 92075)    | 92075-1109    | 2        |
| DAMPER,HEAD LAMP FITTING (Ref # 92075A)   | 92075-1110    | 2        |
| DAMPER (Ref # 92075B)                     | 92075-209     | 1        |
| SPRING,FOCUS ADJUST (Ref # 92081)         | 92081-1892    | 1        |
| BOLT-FLANGED,8X40 (Ref # 130)             | 130C0840      | 2        |

# 1994 Eliminator 250 PARTS LIST

Headlight(s)

| ITEM NAME                     | PART NUMBER | QUANTITY |
|-------------------------------|-------------|----------|
| BOLT-UPSET-WP (Ref # 186)     | 186C0614    | 2        |
| SCREW-PAN-WS-CROS (Ref # 223) | 223D0410    | 2        |
| WASHER-SPRING,5MM (Ref # 461) | 461F0500    | 4        |