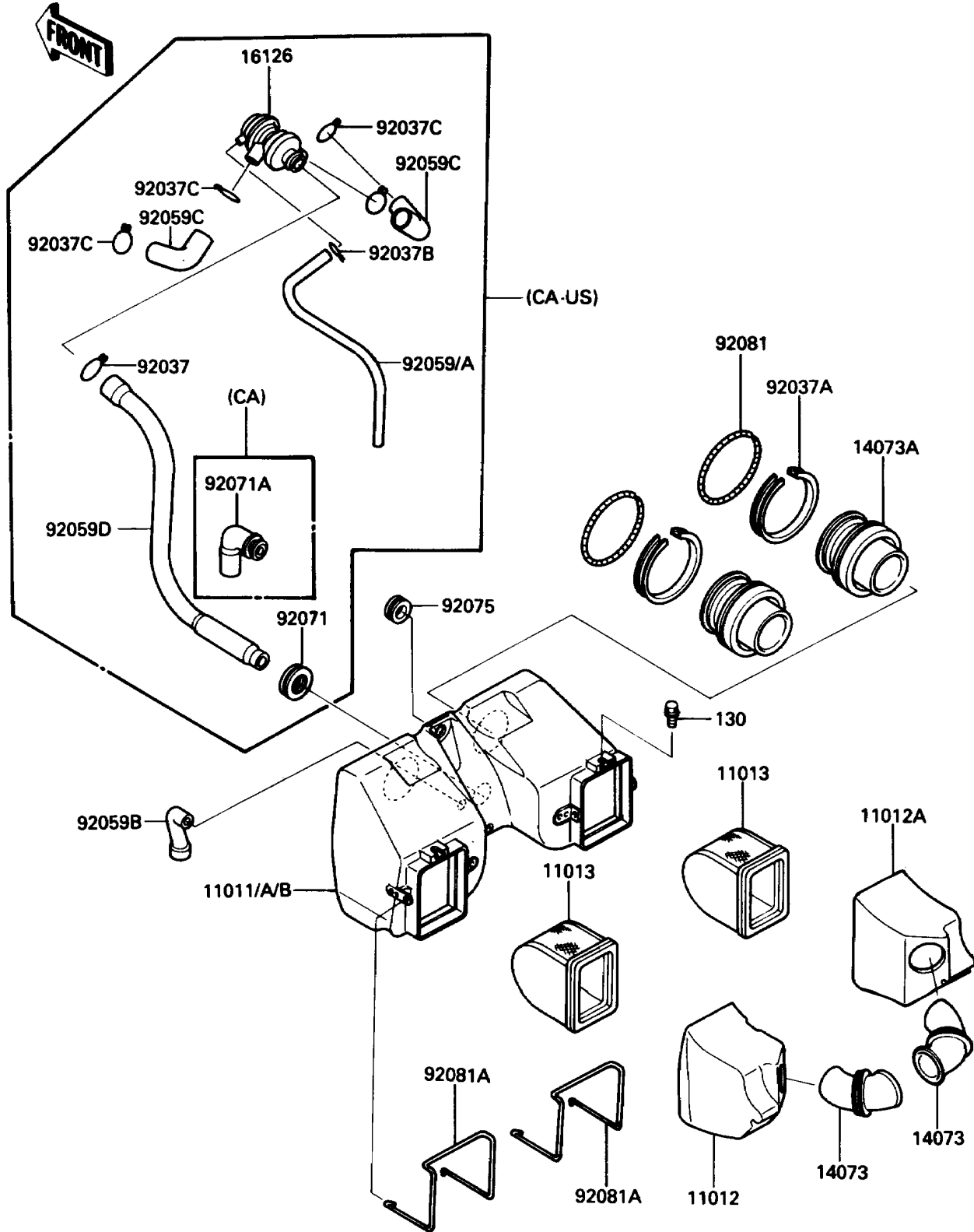


1988 454 LTD PARTS DIAGRAM

Air Cleaner

E1130-0186



1988 454 LTD PARTS LIST

Air Cleaner

ITEM NAME	PART NUMBER	QUANTITY
CASE-AIR FILTER (Ref # 11011)	11011-1184	1
CASE-AIR FILTER (Ref # 11011A)	11011-1188	1
CASE-AIR FILTER (Ref # 11011B)	11011-1198	1
CAP,LH (Ref # 11012)	11012-1429	1
CAP,RH (Ref # 11012A)	11012-1430	1
ELEMENT-AIR FILTER (Ref # 11013)	11013-1126	2
DUCT,INTAKE (Ref # 14073)	14073-1204	2
DUCT,CARBURATOR (Ref # 14073A)	14073-1205	2
VALVE,AIR SWITCH (Ref # 16126)	16126-1005	1
CLAMP,TUBE (Ref # 92037)	92037-1076	1
CLAMP,69MM (Ref # 92037A)	92037-1631	2
CLAMP (Ref # 92037B)	92037-1712	1
CLAMP,TUBE (Ref # 92037C)	92037-213	4
TUBE,4X9X220 (Ref # 92059)	92059-1040	1
TUBE,4X9X290 (Ref # 92059A)	92059-1043	1
TUBE,BREATHER (Ref # 92059B)	92059-1528	1
TUBE,AIR SWITCH VALVE (Ref # 92059C)	92059-1529	2
TUBE,AIR SWITCH VALVE (Ref # 92059D)	92059-1530	1
GROMMET,AIR FILTER (Ref # 92071)	92071-1028	1
GROMMET,AIR FILTER (Ref # 92071A)	92071-1114	1
DAMPER (Ref # 92075)	92075-1185	1
SPRING,COIL,BLACK (Ref # 92081)	92081-1457	2
SPRING,CAP (Ref # 92081A)	92081-1784	2
BOLT-FLANGED,6X8 (Ref # 130)	130B0608	2