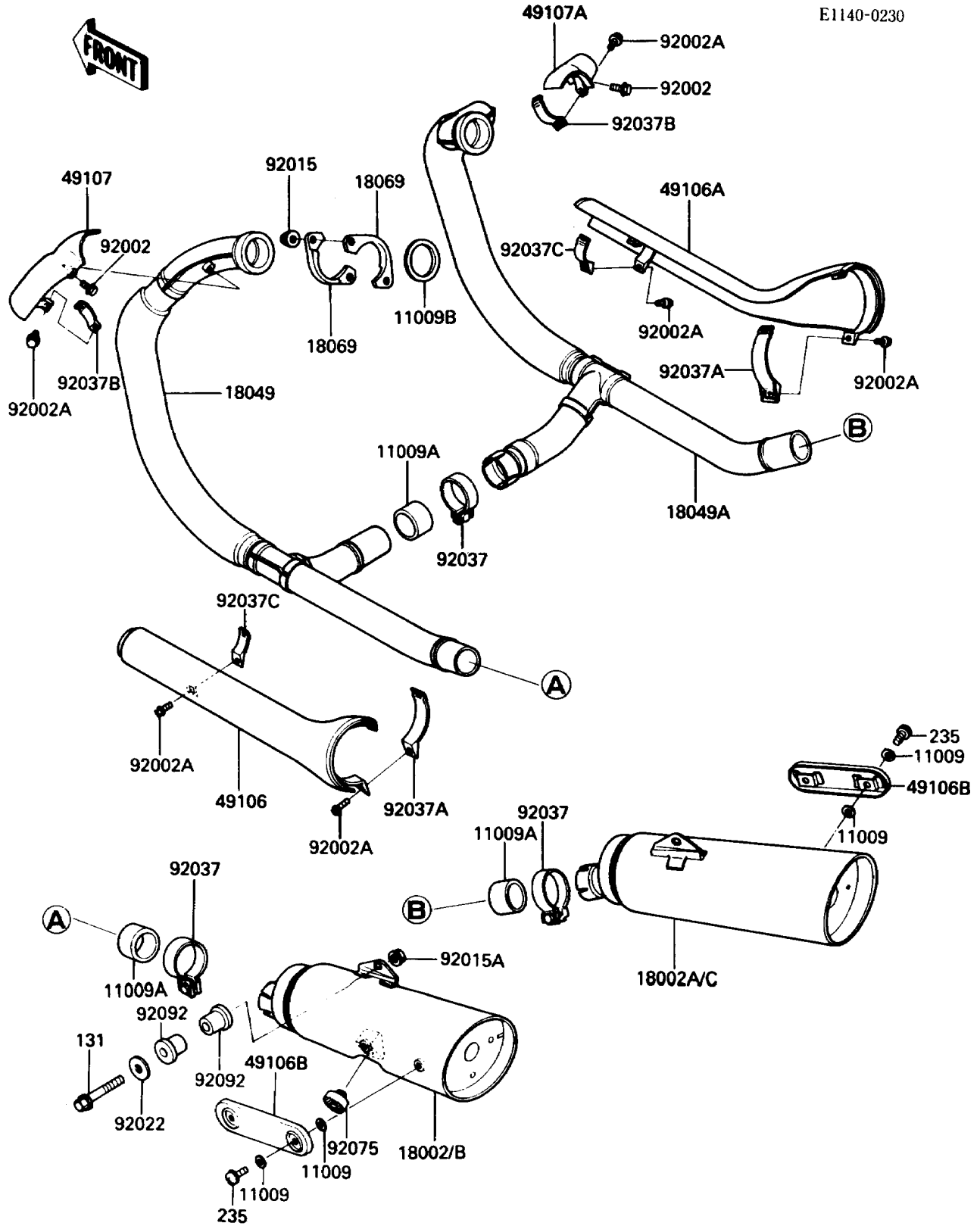


# 1985 454 LTD PARTS DIAGRAM

Muffler(s)

E1140-0230



# 1985 454 LTD PARTS LIST

## Muffler(s)

ITEM NAME	PART NUMBER	QUANTITY
GASKET,6.2X11.5X1.5 (Ref # 11009)	11009-1451	8
GASKET,EXHAUST PIPE CONNECTING (Ref # 11009A)	11009-1634	3
GASKET,EXHAUST PIPE HOLDER (Ref # 11009B)	18067-013	2
BODY-COMP-MUFFLER,LH (Ref # 18002)	18002-1569	1
BODY-COMP-MUFFLER,RH (Ref # 18002A)	18002-1570	1
BODY-COMP-MUFFLER,LH (Ref # 18002B)	18002-1594	1
BODY-COMP-MUFFLER,RH (Ref # 18002C)	18002-1595	1
PIPE-EXHAUST,LH (Ref # 18049)	18049-1318	1
PIPE-EXHAUST,RH (Ref # 18049A)	18049-1319	1
HOLDER-EXHAUST PIPE (Ref # 18069)	18069-1064	4
COVER-MUFFLER,LH (Ref # 49106)	49106-1055	1
COVER-MUFFLER,RH (Ref # 49106A)	49106-1056	1
COVER-MUFFLER (Ref # 49106B)	49106-1061	2
COVER-EXHAUST PIPE,LH (Ref # 49107)	49107-1062	1
COVER-EXHAUST PIPE,RH (Ref # 49107A)	49107-1063	1
BOLT,6X8 (Ref # 92002)	92002-1604	2
BOLT,6X20 (Ref # 92002A)	92002-1607	6
NUT,CAP,8MM (Ref # 92015)	92015-1371	4
NUT,FLANGED,10MM (Ref # 92015A)	92015-1387	2
WASHER,PLAIN (Ref # 92022)	92022-328	2
CLAMP,42MM (Ref # 92037)	92037-1349	3
CLAMP,MUFFLER COVER (Ref # 92037A)	92037-1615	2
CLAMP,EXHAUST PIPE COVER (Ref # 92037B)	92037-1671	2
CLAMP,EXHAUST PIPE COVER (Ref # 92037C)	92037-1699	2
DAMPER,STAND (Ref # 92075)	92075-1788	1
BUSHING-RUBBER,MUFFLER FITTING (Ref # 92092)	92092-010	4
BOLT-FLANGED (Ref # 131)	131G1060	2
SCREW-PAN-WP-CROS (Ref # 235)	235B0608	4