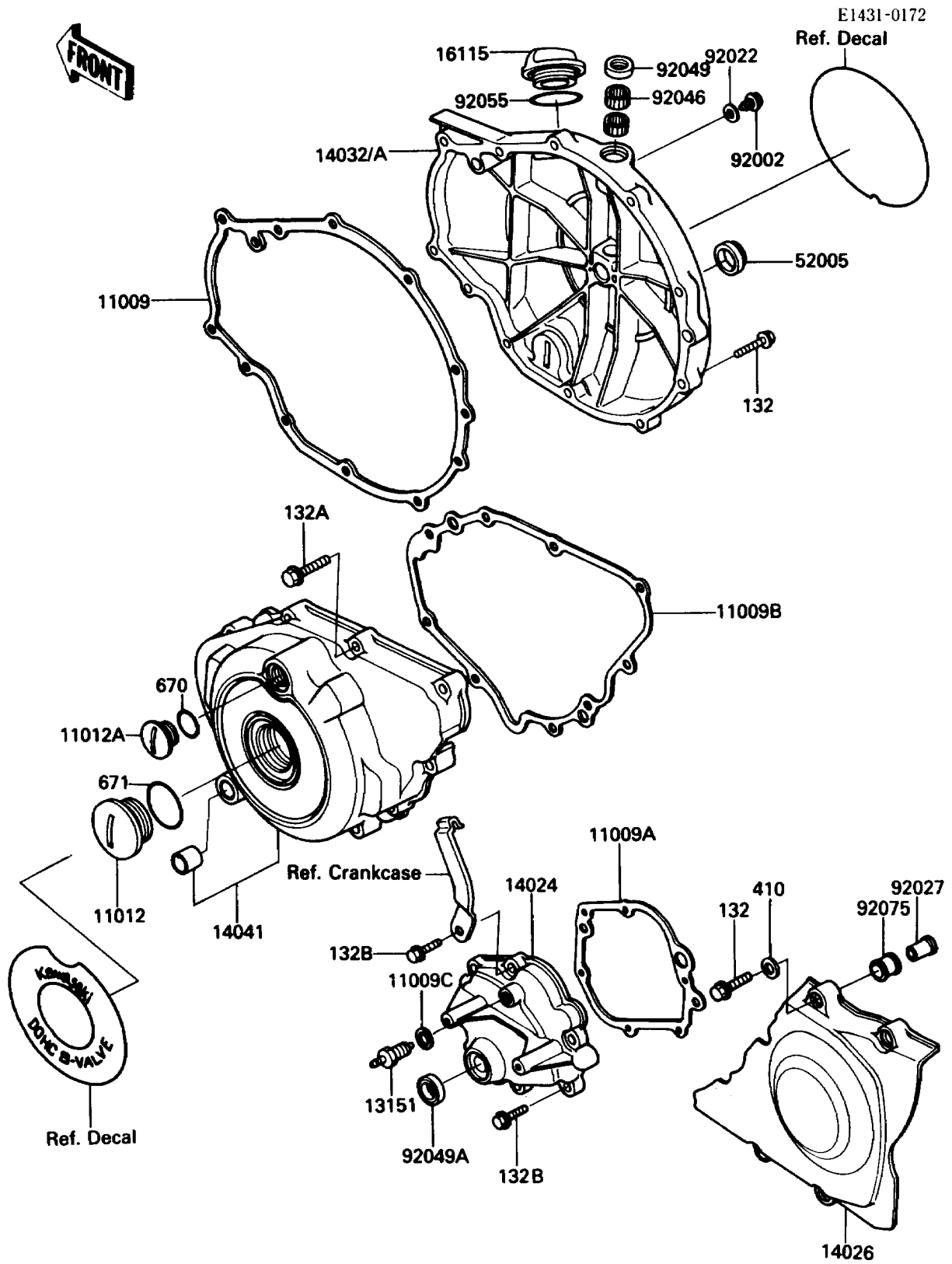


# 1987 454 LTD PARTS DIAGRAM

Engine Cover(s)



# 1987 454 LTD PARTS LIST

## Engine Cover(s)

ITEM NAME	PART NUMBER	QUANTITY
GASKET,CLUTCH COVER (Ref # 11009)	11009-1484	1
GASKET,CHANGE MECHANISM COVER (Ref # 11009A)	11009-1485	1
GASKET,GENERATOR COVER (Ref # 11009B)	11009-1486	1
GASKET,10.5X16X1,DRAIN PLUG (Ref # 11009C)	92065-058	1
CAP (Ref # 11012)	11012-1362	1
CAP,TOP MARK (Ref # 11012A)	11012-1363	1
SWITCH-COMP,NEUTRAL (Ref # 13151)	13151-1007	1
COVER,CHANGE MECHANISM (Ref # 14024)	14025-1986	1
COVER-CHAIN (Ref # 14026)	14026-1116	1
COVER-CLUTCH (Ref # 14032)	14032-1190	1
COVER-COMP,GENERATOR (Ref # 14041)	14041-1057	1
CAP-OIL FILLER (Ref # 16115)	16115-1009	1
GAUGE,OIL LEVEL (Ref # 52005)	52005-1009	1
BOLT (Ref # 92002)	92002-1357	1
WASHER,6.2X11X1 (Ref # 92022)	92022-304	1
COLLAR (Ref # 92027)	92027-1858	4
BEARING-NEEDLE,HK1210 (Ref # 92046)	92046-1010	2
SEAL-OIL,TB12205.5 (Ref # 92049)	92049-1271	1
SEAL-OIL,TB13225.5 (Ref # 92049A)	92051-005	1
RING-O,31.5X2.6 (Ref # 92055)	92055-049	1
DAMPER (Ref # 92075)	92075-1681	4
BOLT-FLANGED-SMALL (Ref # 132)	132E0625	15
BOLT-FLANGED-SMALL (Ref # 132A)	132E0630	9
BOLT-FLANGED-SMALL (Ref # 132B)	132J0620	6
WASHER-PLAIN-SMALL,6MM (Ref # 410)	410B0600	4
O RING,18MM (Ref # 670)	670B2018	1
O RING,40MM (Ref # 671)	671B2540	1