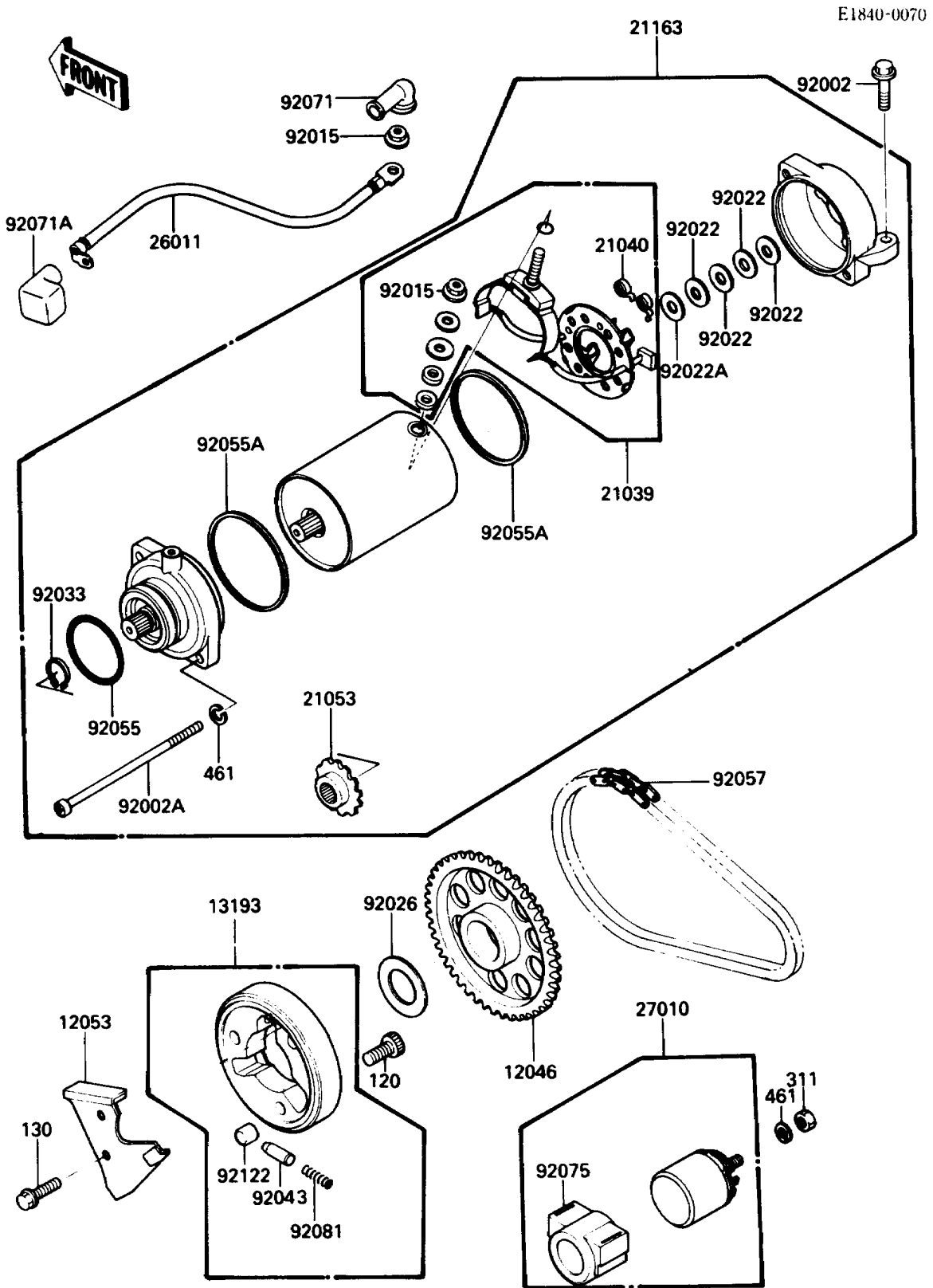


1989 454 LTD PARTS DIAGRAM

Starter Motor



1989 454 LTD PARTS LIST

Starter Motor

ITEM NAME	PART NUMBER	QUANTITY
SPROCKET,ONEWAY CLUTCH,46T (Ref # 12046)	12046-1072	1
GUIDE-CHAIN (Ref # 12053)	12053-1149	1
CLUTCH-ASSY-ONEWAY (Ref # 13193)	13193-1053	1
BRUSH,CARBON (Ref # 21039)	21039-1053	1
SPRING-BRUSH (Ref # 21040)	21040-1003	2
SPROCKET-ASSY (Ref # 21053)	21053-002	1
STARTER-ELECTRIC (Ref # 21163)	21163-1070	1
WIRE-LEAD,STARATER MOTOR (Ref # 26011)	26011-1293	1
SWITCH,MAGNETIC (Ref # 27010)	27010-1235	1
BOLT,6X25 (Ref # 92002)	92002-1086	2
BOLT,STARTER MOTOR (Ref # 92002A)	92002-1474	2
NUT,STARTER MOTOR (Ref # 92015)	92015-1476	2
WASHER,9.1X18X0.2 (Ref # 92022)	21025-011	4
WASHER,9.1X18X0.8 (Ref # 92022A)	92022-1132	1
SPACER,25.2X40X1.0 (Ref # 92026)	92026-1285	1
RING-SNAP,17MM (Ref # 92033)	92033-034	1
PIN (Ref # 92043)	92043-087	3
RING-O,42.8MM (Ref # 92055)	21027-005	1
RING-O,64MM (Ref # 92055A)	92055-1086	1
CHAIN,STARTER,BF05MX64L (Ref # 92057)	92057-1197	1
GROMMET,STARTER TERMINAL (Ref # 92071)	21017-017	1
GROMMET,TERMINAL (Ref # 92071A)	92071-1127	1
DAMPER,MAGNETIC SWITCH (Ref # 92075)	21064-002	1
SPRING (Ref # 92081)	92081-110	3
ROLLER,15X13 (Ref # 92122)	92122-004	3
BOLT-SOCKET (Ref # 120)	120P0816	3
BOLT-FLANGED,6X20 (Ref # 130)	130G0620	2
NUT-HEX,6MM (Ref # 311)	311B0600	2
WASHER-SPRING,6MM (Ref # 461)	461F0600	4