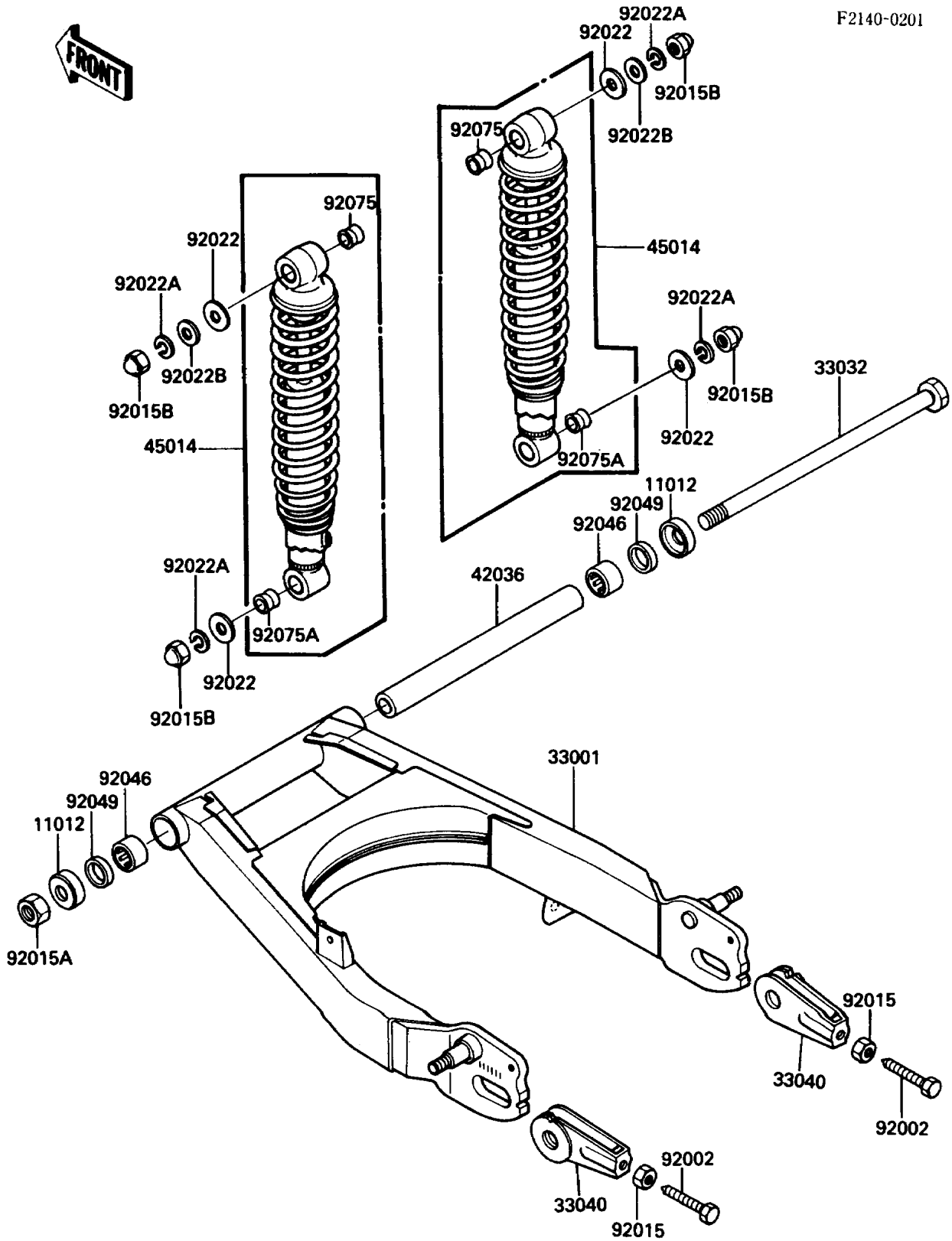


1985 454 LTD PARTS DIAGRAM

Swingarm/Shock Absorber

F2140-0201



1985 454 LTD PARTS LIST

Swingarm/Shock Absorber

| ITEM NAME | PART NUMBER | QUANTITY |
|--|-------------|----------|
| CAP,SWING ARM (Ref # 11012) | 11012-1029 | 2 |
| ARM-COMP-SWING (Ref # 33001) | 33001-1235 | 1 |
| SHAFT-SWING ARM (Ref # 33032) | 33032-1113 | 1 |
| ADJUSTER-CHAIN (Ref # 33040) | 33040-043 | 2 |
| SLEEVE,SWING ARM (Ref # 42036) | 42036-1018 | 1 |
| SHOCKABSORBER (Ref # 45014) | 45014-1305 | 2 |
| BOLT,CHAIN ADJUSTER,8X50 (Ref # 92002) | 92002-1076 | 2 |
| NUT,8MM (Ref # 92015) | 92015-1364 | 2 |
| NUT,14MM (Ref # 92015A) | 92015-1411 | 1 |
| NUT,CAP,10MM (Ref # 92015B) | 92020-003 | 4 |
| WASHER,10.5X26X2.3 (Ref # 92022) | 92022-044 | 4 |
| WASHER,SPRING,10MM (Ref # 92022A) | 92022-1540 | 4 |
| WASHER,10.5X22X1.6 (Ref # 92022B) | 92022-1558 | 2 |
| BEARING-NEEDLE,HK2216 (Ref # 92046) | 92046-1115 | 2 |
| SEAL-OIL,MHA22284 (Ref # 92049) | 92049-1059 | 2 |
| DAMPER,SHOCKABSORBER (Ref # 92075) | 45017-015 | 2 |
| DAMPER,SHOCKABSORBER (Ref # 92075A) | 92075-1387 | 2 |