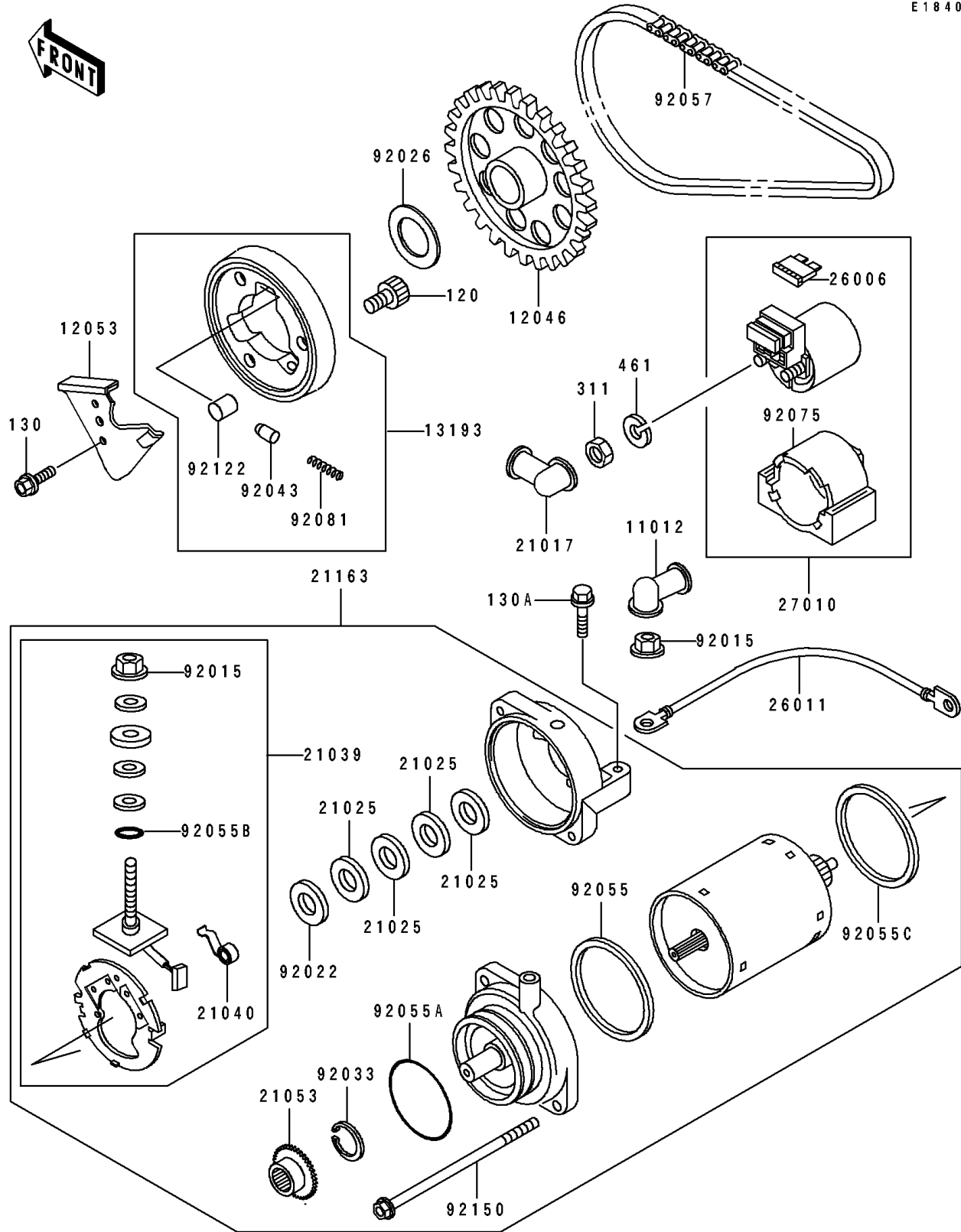


1995 Vulcan 500 PARTS DIAGRAM

Starter Motor

E1840



1995 Vulcan 500 PARTS LIST

Starter Motor

| ITEM NAME | PART NUMBER | QUANTITY |
|--|-------------|----------|
| CAP,TERMINAL (Ref # 11012) | 11012-1354 | 1 |
| SPROCKET,ONEWAY CLUTCH,46T (Ref # 12046) | 12046-1072 | 1 |
| GUIDE-CHAIN (Ref # 12053) | 12053-1214 | 1 |
| CLUTCH-ASSY-ONEWAY (Ref # 13193) | 13193-1060 | 1 |
| GROMMET,STARTER TERMINAL (Ref # 21017) | 21017-017 | 1 |
| WASHER,9.1X18X0.2 (Ref # 21025) | 21025-011 | 4 |
| BRUSH,CARBON (Ref # 21039) | 21039-1062 | 1 |
| SPRING-BRUSH (Ref # 21040) | 21040-1057 | 2 |
| SPROCKET-ASSY (Ref # 21053) | 21053-1057 | 1 |
| STARTER-ELECTRIC (Ref # 21163) | 21163-1125 | 1 |
| FUSE,30A-G (Ref # 26006) | 26006-1006 | 1 |
| WIRE-LEAD,STARTER MOTOR (Ref # 26011) | 26011-1073 | 1 |
| SWITCH,MAGNETIC (Ref # 27010) | 27010-1213 | 1 |
| NUT,STARTER MOTOR (Ref # 92015) | 92015-1476 | 2 |
| WASHER,9.1X18X0.8 (Ref # 92022) | 92022-1132 | 1 |
| SPACER,25.2X40X1.0 (Ref # 92026) | 92026-1285 | 1 |
| RING-SNAP,17MM (Ref # 92033) | 92033-034 | 1 |
| PIN (Ref # 92043) | 92043-087 | 3 |
| RING-O,64MM (Ref # 92055) | 92055-1086 | 1 |
| RING-O,42.8MM (Ref # 92055A) | 92055-1313 | 1 |
| RING-O,4.5X2.0 (Ref # 92055B) | 92055-1370 | 1 |
| RING-O,STARTER MOTOR (Ref # 92055C) | 92055-1381 | 1 |
| CHAIN,STARTER,BF05MX64L (Ref # 92057) | 92057-1197 | 1 |
| DAMPER,MAGNETIC SWITCH (Ref # 92075) | 92075-1863 | 1 |
| SPRING (Ref # 92081) | 92081-110 | 3 |
| ROLLER,15X13 (Ref # 92122) | 92122-004 | 3 |
| BOLT,STARTER MOTOR (Ref # 92150) | 92150-1138 | 2 |
| BOLT-SOCKET (Ref # 120) | 120P0816 | 3 |
| BOLT-FLANGED,6X20 (Ref # 130) | 130G0620 | 2 |

1995 Vulcan 500 PARTS LIST

Starter Motor

| ITEM NAME | PART NUMBER | QUANTITY |
|-------------------------------|-------------|----------|
| BOLT-FLANGED (Ref # 130A) | 130Y0625 | 2 |
| NUT-HEX,6MM (Ref # 311) | 311B0600 | 2 |
| WASHER-SPRING,6MM (Ref # 461) | 461F0600 | 2 |