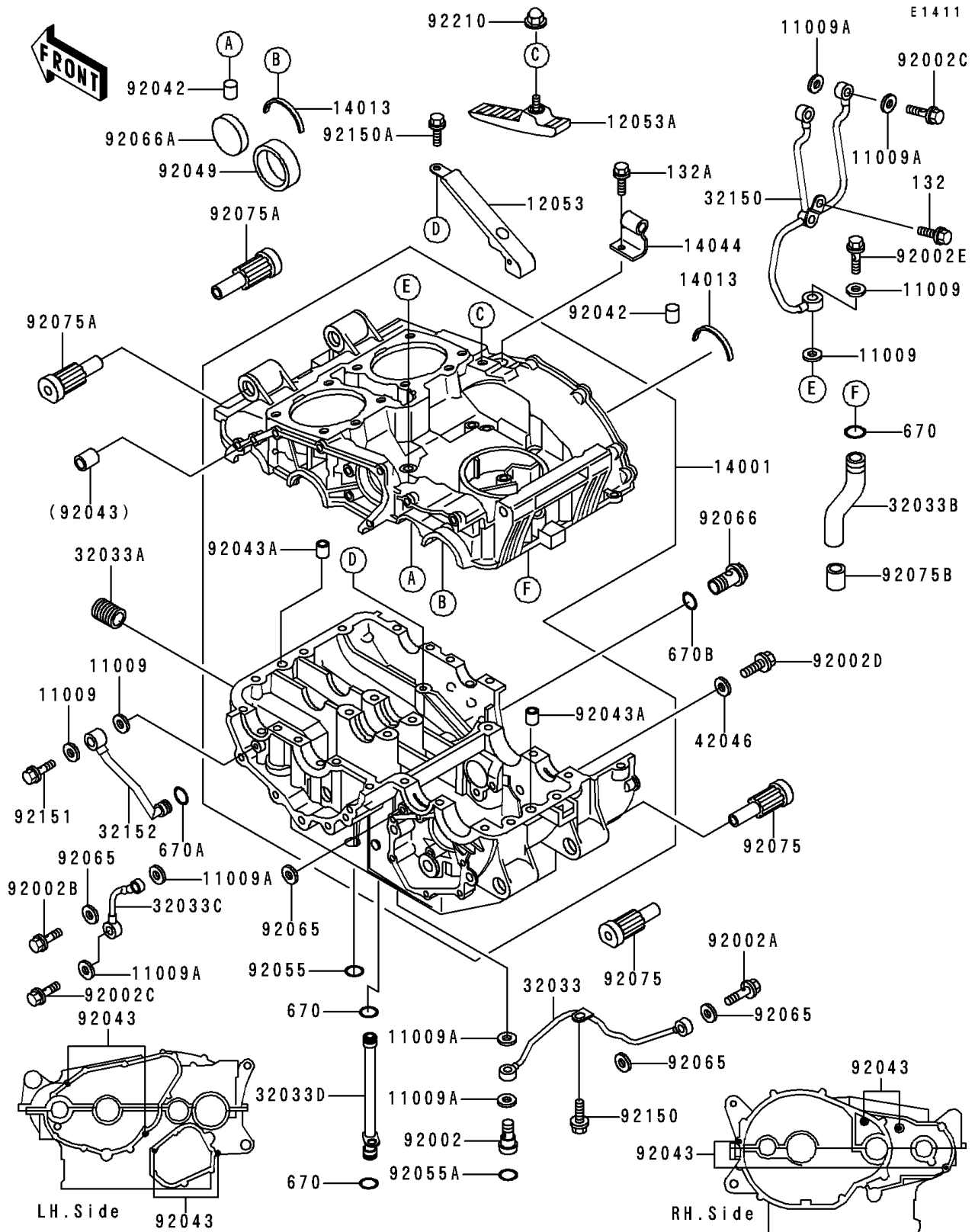


1998 Vulcan 500 LTD PARTS DIAGRAM

Crankcase



1998 Vulcan 500 LTD PARTS LIST

Crankcase

ITEM NAME	PART NUMBER	QUANTITY
BOLT-FLANGED-SMALL (Ref # 132)	132Y0612	1
BOLT-FLANGED-SMALL (Ref # 132A)	132Y0616	1
GASKET,10X14.5X1.5 (Ref # 11009)	11009-1105	4
GASKET,OIL PIPE,8.2X14X1.0 (Ref # 11009A)	11009-1344	8
GUIDE-CHAIN,LWR (Ref # 12053)	12053-1378	1
GUIDE-CHAIN,UPP (Ref # 12053A)	12053-1379	1
SET-CRANKCASE (Ref # 14001)	14001-1092	1
RING-POSITION (Ref # 14013)	14013-004	2
HOLDER-CABLE (Ref # 14044)	14044-1070	1
PIPE (Ref # 32033)	32033-1530	1
PIPE,OIL FILTER (Ref # 32033A)	32033-1535	1
PIPE (Ref # 32033B)	32033-1538	1
PIPE (Ref # 32033C)	32033-1539	1
PIPE (Ref # 32033D)	32033-1574	1
PIPE (Ref # 32150)	32150-1478	1
PIPE,OIL (Ref # 32152)	32152-1166	1
WASHER,6.5X24X1.2 (Ref # 42046)	42046-008	1
BOLT (Ref # 92002)	92002-1467	1
BOLT,BANJO,6X28 (Ref # 92002A)	92002-1471	1
BOLT,BANJO,6X19 (Ref # 92002B)	92002-1473	1
BOLT,BANJO,8X20 (Ref # 92002C)	92002-1618	3
BOLT,6X14 (Ref # 92002D)	92002-1656	1
BOLT,OIL,L=23 (Ref # 92002E)	92002-1809	1
PIN,DOWEL,6X16 (Ref # 92042)	92042-016	2
PIN,6.2X8X14 (Ref # 92043)	92043-1263	8
PIN,8.2X10X14 (Ref # 92043A)	92043-1264	2
SEAL-OIL,AE2343F0 (Ref # 92049)	92049-1070	1
RING-O,OD=18 (Ref # 92055)	92055-048	2
RING-O,OD=13 (Ref # 92055A)	92055-074	1

1998 Vulcan 500 LTD PARTS LIST

Crankcase

ITEM NAME	PART NUMBER	QUANTITY
GASKET (Ref # 92065)	92065-096	4
PLUG,MAIN GALLERY (Ref # 92066)	92066-1205	1
PLUG,RCA 345.5 (Ref # 92066A)	92066-1208	1
DAMPER,L=79.5 (Ref # 92075)	92075-1678	2
DAMPER,L=93 (Ref # 92075A)	92075-1679	2
DAMPER (Ref # 92075B)	92075-1742	1
BOLT,6X12 (Ref # 92150)	92150-1826	1
BOLT,6X12 (Ref # 92150A)	92150-1868	2
BOLT,BANJO,10X27 (Ref # 92151)	92151-1066	1
NUT (Ref # 92210)	92210-1061	1
O RING,10MM (Ref # 670)	670B1510	3
O RING,10MM (Ref # 670A)	670B2010	1
O RING,21MM (Ref # 670B)	670B2021	1