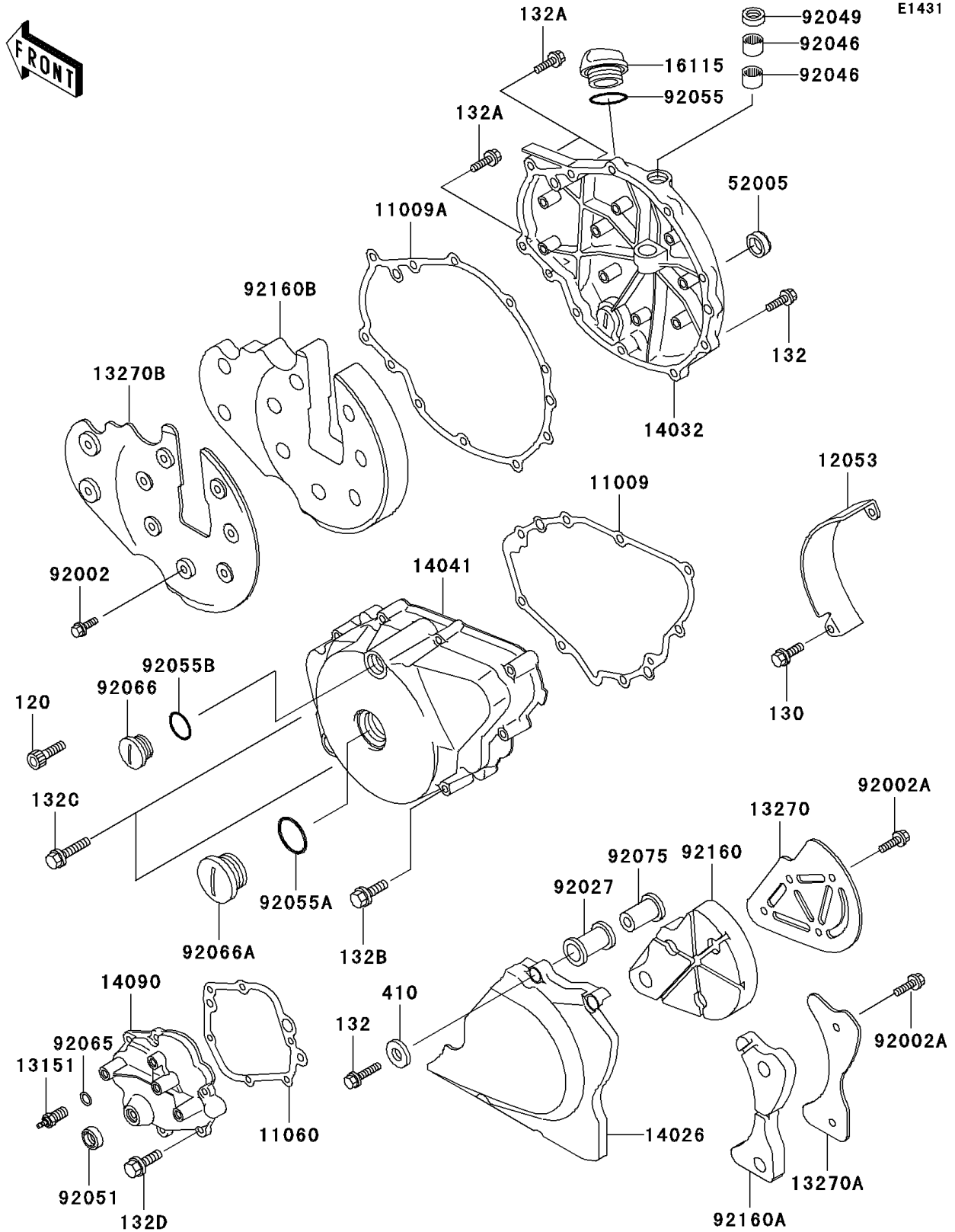


2001 Vulcan 500 LTD PARTS DIAGRAM

Engine Cover(s)



2001 Vulcan 500 LTD PARTS LIST

Engine Cover(s)

ITEM NAME	PART NUMBER	QUANTITY
BOLT-SOCKET,6X40,BLACK (Ref # 120)	120S0640	1
BOLT-FLANGED,6X12 (Ref # 130)	130G0612	2
BOLT-FLANGED-SMALL (Ref # 132)	132E0625	11
BOLT-FLANGED-SMALL (Ref # 132A)	132E0635	4
BOLT-FLANGED-SMALL (Ref # 132B)	132E0640	6
BOLT-FLANGED-SMALL (Ref # 132C)	132E0655	2
BOLT-FLANGED-SMALL (Ref # 132D)	132J0620	6
WASHER-PLAIN-SMALL,6MM (Ref # 410)	410B0600	4
GASKET,GENERATOR COVER (Ref # 11009)	11009-1834	1
GASKET,CLUTCH COVER (Ref # 11009A)	11009-1836	1
GASKET,CHANGE MECHANISM (Ref # 11060)	11060-1830	1
GUIDE-CHAIN (Ref # 12053)	12053-1215	1
SWITCH-COMP,NEUTRAL (Ref # 13151)	13151-1080	1
PLATE (Ref # 13270)	13270-1558	1
PLATE (Ref # 13270A)	13270-1559	1
PLATE (Ref # 13270B)	13270-1586	1
COVER-CHAIN (Ref # 14026)	14026-1232	1
COVER-CLUTCH (Ref # 14032)	14032-1431	1
COVER-COMP,GENERATOR (Ref # 14041)	14041-1118	1
COVER,CHANGE MECHANISM (Ref # 14090)	14090-1661	1
CAP-OIL FILLER (Ref # 16115)	16115-1062	1
GAUGE,OIL LEVEL (Ref # 52005)	52005-1009	1
BOLT,6X10 (Ref # 92002)	92002-1541	9
BOLT,6X8 (Ref # 92002A)	92002-1604	6
COLLAR (Ref # 92027)	92027-1858	4
BEARING-NEEDLE,HK1210 (Ref # 92046)	92046-1010	2
SEAL-OIL,TB12205.5 (Ref # 92049)	92049-1271	1
SEAL-OIL,TB13225.5 (Ref # 92051)	92051-005	1
RING-O,31.7X2.4 (Ref # 92055)	92055-049	1

2001 Vulcan 500 LTD PARTS LIST

Engine Cover(s)

ITEM NAME	PART NUMBER	QUANTITY
RING-O (Ref # 92055A)	92055-091	1
RING-O (Ref # 92055B)	92055-1146	1
GASKET,10.5X16X1 (Ref # 92065)	92065-058	1
PLUG (Ref # 92066)	92066-1397	1
PLUG (Ref # 92066A)	92066-1404	1
DAMPER (Ref # 92075)	92075-1681	4
DAMPER (Ref # 92160)	92160-1687	1
DAMPER (Ref # 92160A)	92160-1688	1
DAMPER (Ref # 92160B)	92160-1710	1