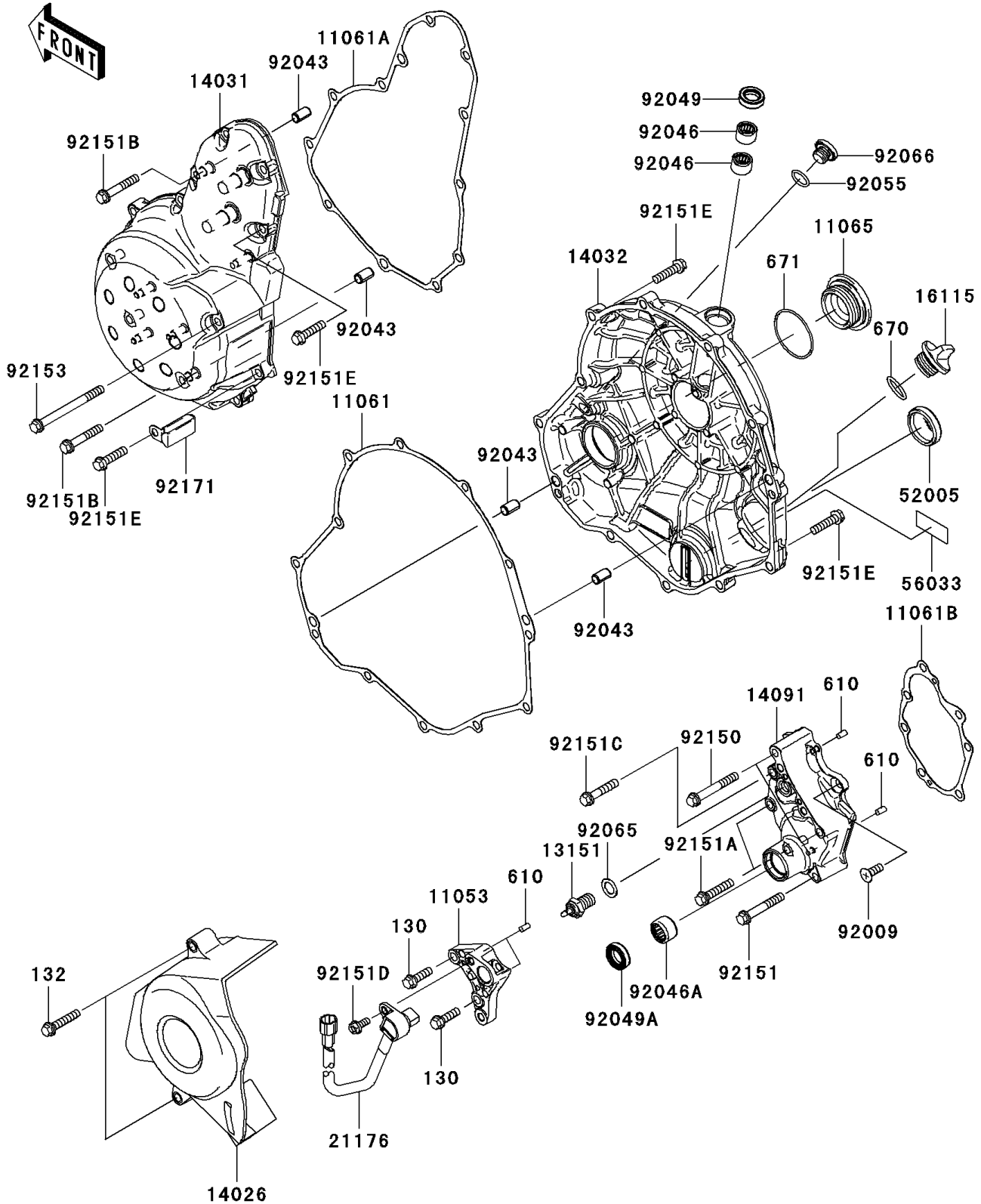


2008 ER-6n (Australian) PARTS DIAGRAM

Engine Cover(s)

E1431



2008 ER-6n (Australian) PARTS LIST

Engine Cover(s)

ITEM NAME	PART NUMBER	QUANTITY
BOLT-FLANGED,6X20 (Ref # 130)	130BA0620	2
BOLT-FLANGED-SMALL,6X30 (Ref # 132)	132BB0630	2
ROLLER,4X8 (Ref # 610)	610A0408	4
O RING,20MM (Ref # 670)	670B2020	1
O RING,40MM (Ref # 671)	671B2540	1
BRACKET (Ref # 11053)	11053-1739	1
GASKET,CLUTCH COVER (Ref # 11061)	11061-0164	1
GASKET,GENERATOR COVER (Ref # 11061A)	11061-0165	1
GASKET,TRANSMISSION COVER (Ref # 11061B)	11061-0166	1
CAP (Ref # 11065)	11065-0150	1
SWITCH-COMP,NEUTRAL (Ref # 13151)	13151-1080	1
COVER-CHAIN (Ref # 14026)	14026-0021	1
COVER-GENERATOR (Ref # 14031)	14031-0058	1
COVER-CLUTCH (Ref # 14032)	14032-0084	1
COVER,TRANSMISSION (Ref # 14091)	14091-0445	1
CAP-OIL FILLER (Ref # 16115)	16115-1053	1
SENSOR,SPEED (Ref # 21176)	21176-0065	1
GAUGE,OIL LEVEL (Ref # 52005)	52005-1057	1
LABEL-MANUAL,OIL CAPACITY (Ref # 56033)	56033-0131	1
SCREW,6X16 (Ref # 92009)	92009-1360	1
PIN,6.2X8X14 (Ref # 92043)	92043-1263	4
BEARING-NEEDLE,HK1210 (Ref # 92046)	92046-1010	2
BEARING-NEEDLE,HK1312 (Ref # 92046A)	92046-1148	1
SEAL-OIL,CLUTCH RELEASE (Ref # 92049)	92049-1475	1
SEAL-OIL,TC13225.5 (Ref # 92049A)	92049-1519	1
RING-O,13.0X1.9 (Ref # 92055)	92055-1011	1
GASKET,10.5X16X1 (Ref # 92065)	92065-058	1
PLUG (Ref # 92066)	92066-0073	1
BOLT,6X45 (Ref # 92150)	92150-1884	2

2008 ER-6n (Australian) PARTS LIST

Engine Cover(s)

ITEM NAME	PART NUMBER	QUANTITY
BOLT,6X40 (Ref # 92151)	92151-1131	1
BOLT,6X30 (Ref # 92151A)	92151-1134	2
BOLT,6X35 (Ref # 92151B)	92151-1135	2
BOLT,6X30 (Ref # 92151C)	92151-1201	1
BOLT,FLANGED,5X12 (Ref # 92151D)	92151-1305	1
BOLT,FLANGED-SMALL,6X25 (Ref # 92151E)	92151-1930	21
BOLT,FLANGED,6X70 (Ref # 92153)	92153-0018	1
CLAMP (Ref # 92171)	92171-0911	1