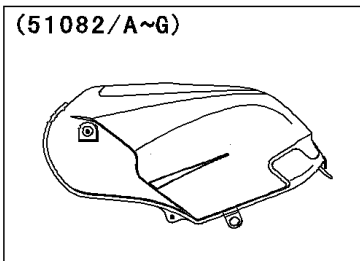
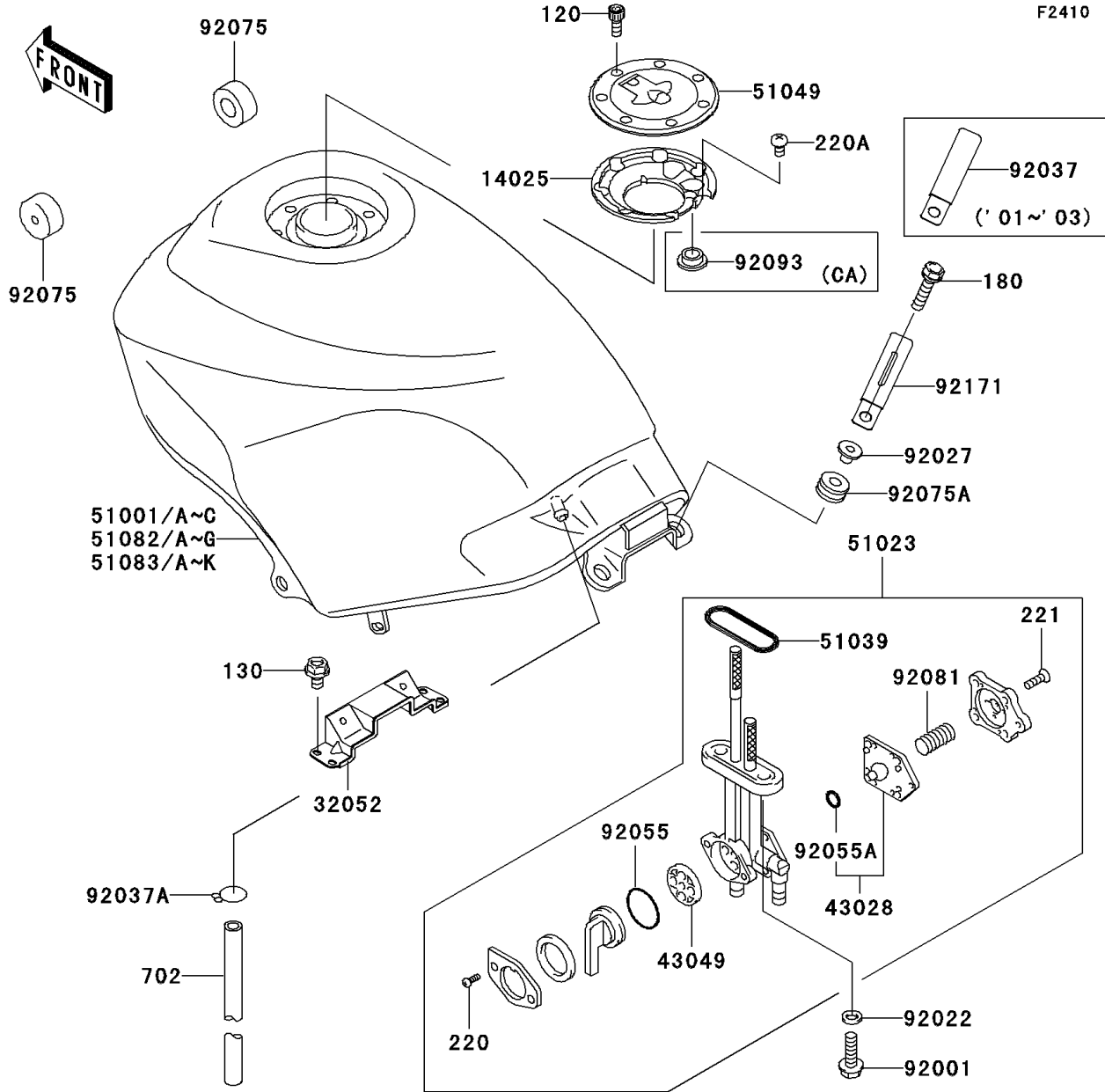


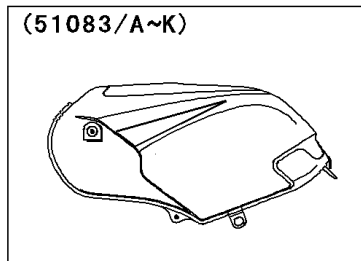
# 2002 Ninja® 250R PARTS DIAGRAM

Fuel Tank(4/4)

F2410



WD



WD

(51082/B/F/G)	Green
(51082A/C)	Yellow
(51082D/E)	Blue
(51083/C/H/K)	Blue
(51083A/D/G/J)	Silver
(51083B/E)	Yellow
(51083F/I)	Ebony

## 2002 Ninja® 250R PARTS LIST

Fuel Tank(4/4)

ITEM NAME	PART NUMBER	QUANTITY
COVER,TANK CAP (Ref # 14025)	14025-1913	1
BRACKET-TANK,RR (Ref # 32052)	32052-1254	1
DIAPHRAGM,TAP (Ref # 43028)	43028-1068	1
PACKING (Ref # 43049)	43049-1103	1
TAP-ASSY,FUEL (Ref # 51023)	51023-1393	1
RING,TAP FLANGED (Ref # 51039)	51039-003	1
CAP-TANK,FUEL (Ref # 51049)	51049-1131	1
BOLT-SOCKET (Ref # 120)	120S0512	7
BOLT-FLANGED,6X10 (Ref # 130)	130H0610	4
BOLT-UPSET-WS,6X25 (Ref # 180)	180D0625	2
SCREW-PAN-CROS (Ref # 220)	220C0308	2
SCREW-PAN-CROSS (Ref # 220A)	220F0508	1
SCREW-CSK-CROS,4X14 (Ref # 221)	221B0414	5
TUBE-RUBBER,7X10X1000 (Ref # 702)	702A071000	1
BOLT,6X20 (Ref # 92001)	92001-1091	2
WASHER,6.2X11X1.5 (Ref # 92022)	92022-183	2
COLLAR,L=13.1 (Ref # 92027)	92027-251	2
CLAMP,L=60 (Ref # 92037)	92037-1069	1
CLAMP (Ref # 92037A)	92037-1712	1
RING-O,TAP LEVER (Ref # 92055)	92055-1085	1
RING-O (Ref # 92055A)	92055-1664	1
DAMPER,FUEL TANK,FR (Ref # 92075)	92075-1115	2
DAMPER (Ref # 92075A)	92075-1690	2
SPRING,TAP DIAPHRAGM (Ref # 92081)	92081-1240	1
TANK-COMP-FUEL,L.GREEN (Ref # 51082)	51082-5029-7F	1
TANK-COMP-FUEL,P.C.YELLOW (Ref # 51082A)	51082-5030-1B	1
TANK-COMP-FUEL,L.GREEN (Ref # 51082B)	51082-5031-7F	1
TANK-COMP-FUEL,P.C.YELLOW (Ref # 51082C)	51082-5032-1B	1
SEAL,FUEL TANK CAP (Ref # 92093)	92093-1030	1