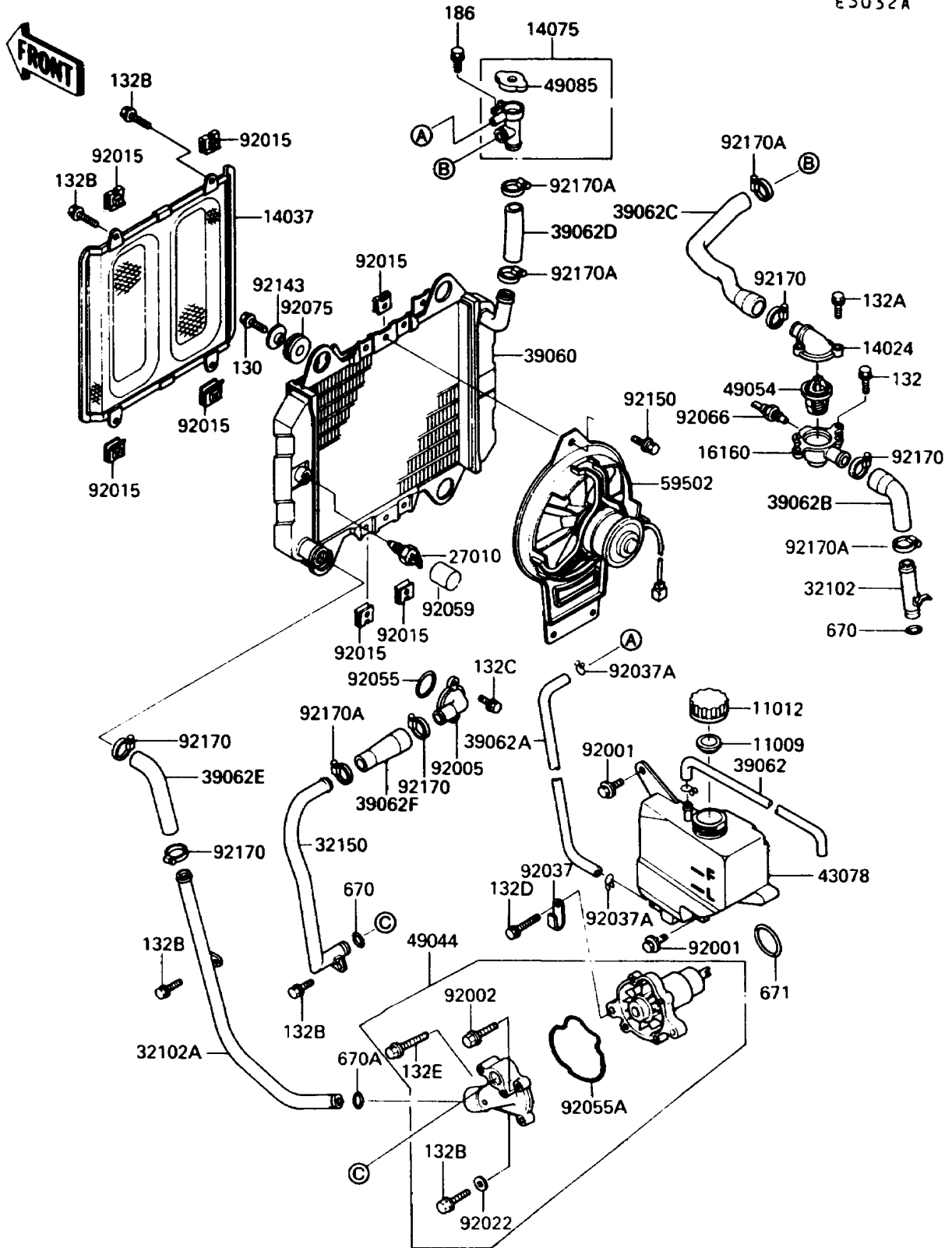


# 1990 Ninja® 250R PARTS DIAGRAM

Radiator(JA004011-KA005002)

E3032A



# 1990 Ninja® 250R PARTS LIST

Radiator(JA004011-KA005002)

ITEM NAME	PART NUMBER	QUANTITY
GASKET,RESERVOIR TANK CAP (Ref # 11009)	11009-1145	1
CAP (Ref # 11012)	11012-1084	1
COVER,THERMOSTAT UPP (Ref # 14024)	14024-1232	1
SCREEN (Ref # 14037)	14037-1078	1
CAP-ASSY,RADIATOR (Ref # 14075)	14075-1061	1
BODY,THERMOSTAT (Ref # 16160)	16160-1110	1
SWITCH,THERMOSTAT (Ref # 27010)	27010-1249	1
PIPE,HEAD-THERMOSTAT (Ref # 32102)	32102-1021	1
PIPE (Ref # 32102A)	32102-1531	1
PIPE (Ref # 32150)	32150-1143	1
RADIATOR (Ref # 39060)	39060-1087	1
HOSE-COOLING,RESERVOIR (Ref # 39062)	39062-1007	1
HOSE-COOLING (Ref # 39062A)	39062-1028	1
HOSE-COOLING,HEAD-THERMOSTAT (Ref # 39062B)	39062-1170	1
HOSE-COOLING,CAP-THERMOBODY (Ref # 39062C)	39062-1171	1
HOSE-COOLING,RADIATOR-CAP (Ref # 39062D)	39062-1172	1
HOSE-COOLING,RADIATOR-PUMP (Ref # 39062E)	39062-1173	1
HOSE-COOLING,PUMP-CYLINDER (Ref # 39062F)	39062-1246	1
RESERVOIR (Ref # 43078)	43078-1070	1
PUMP-WATER (Ref # 49044)	49044-1064	1
THERMOSTAT (Ref # 49054)	49054-1058	1
CAP-ASSY-PRESSURE (Ref # 49085)	49085-1003	1
FAN-ASSY (Ref # 59502)	59502-1066	1
BOLT,W/WASHER,6X12 (Ref # 92001)	92001-1516	2
BOLT,6X18 (Ref # 92002)	92002-1806	3
FITTING,CYLINDER (Ref # 92005)	92005-1145	1
NUT (Ref # 92015)	92015-1487	7
WASHER,6MM (Ref # 92022)	92022-1627	1
CLAMP,WIRING HARNESS (Ref # 92037)	21126-008	2

# 1990 Ninja® 250R PARTS LIST

Radiator(JA004011-KA005002)

ITEM NAME	PART NUMBER	QUANTITY
CLAMP,TUBE (Ref # 92037A)	92037-147	3
RING-O (Ref # 92055)	92055-091	1
RING-O (Ref # 92055A)	92055-1432	1
TUBE,FAN SWITCH (Ref # 92059)	92059-1979	1
PLUG,SENSOR WATER (Ref # 92066)	92066-1183	1
DAMPER (Ref # 92075)	92075-1665	4
COLLAR (Ref # 92143)	92143-1063	4
BOLT,6X12 (Ref # 92150)	92150-1186	3
CLAMP,COOLING HOSE (Ref # 92170)	92037-1989	5
CLAMP,COOLING HOSE (Ref # 92170A)	92170-1033	5
BOLT-FLANGED (Ref # 130)	130C0625	4
BOLT-FLANGED-SMALL (Ref # 132)	132G0612	2
BOLT-FLANGED-SMALL (Ref # 132A)	132G0625	2
BOLT-FLANGED-SMALL (Ref # 132B)	132J0612	7
BOLT-FLANGED-SMALL (Ref # 132C)	132J0616	2
BOLT-FLANGED-SMALL (Ref # 132D)	132J0630	2
BOLT-FLANGED-SMALL (Ref # 132E)	132J0635	1
BOLT-UPSET-WP (Ref # 186)	186C0616	2
O RING,16MM (Ref # 670)	670B2016	2
O RING,18MM (Ref # 670A)	670B2018	1
O RING (Ref # 671)	671D2535	1