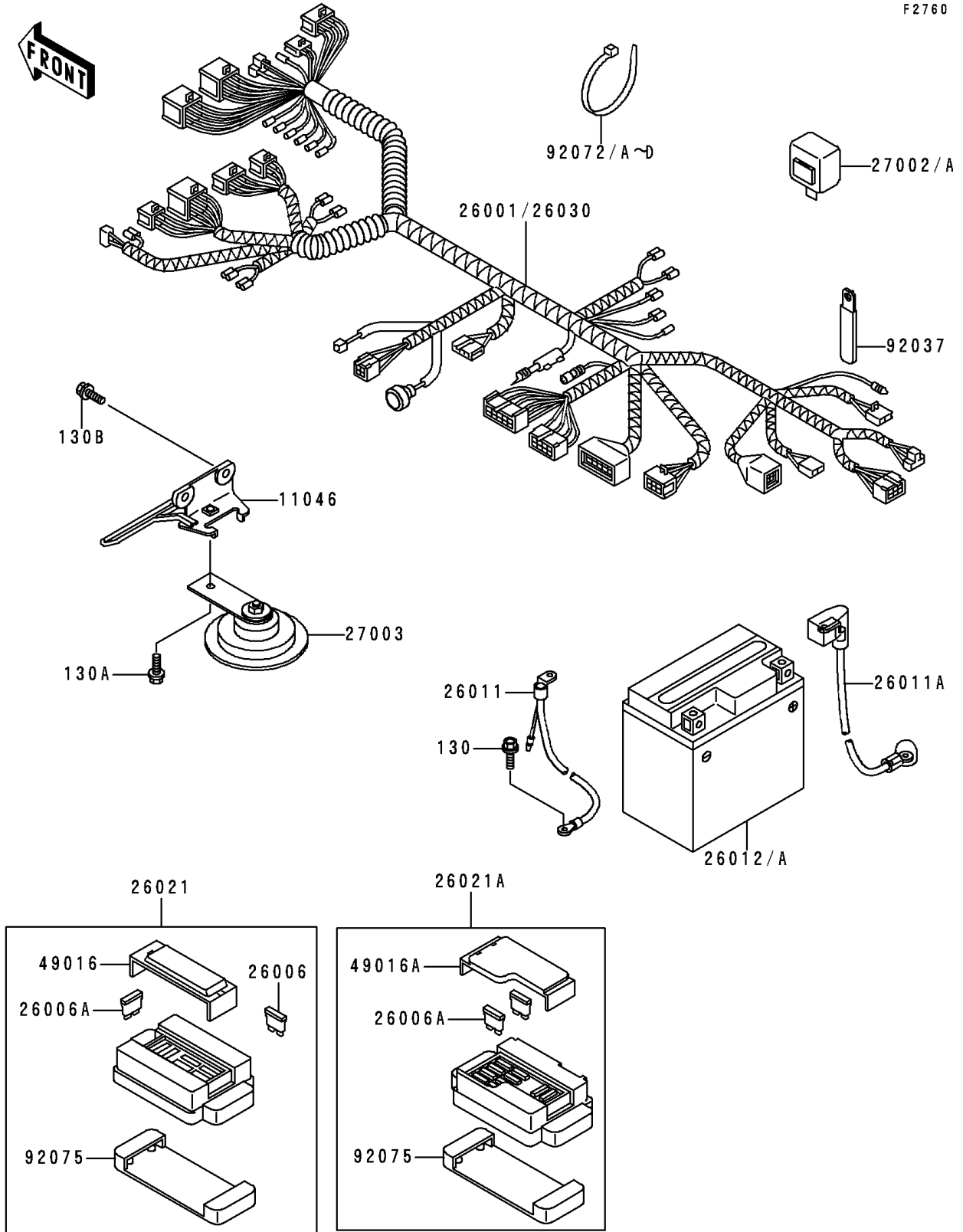


1995 Ninja® 250R PARTS DIAGRAM

Chassis Electrical Equipment

F2760



1995 Ninja® 250R PARTS LIST

Chassis Electrical Equipment

| ITEM NAME | PART NUMBER | QUANTITY |
|---|-------------|----------|
| BOLT-FLANGED,6X12 (Ref # 130) | 130C0612 | 1 |
| BOLT-FLANGED,6X12 (Ref # 130A) | 130C0612 | 1 |
| BOLT-FLANGED,6X14 (Ref # 130B) | 130G0614 | 2 |
| BRACKET,HORN&CABLE (Ref # 11046) | 11046-1233 | 1 |
| FUSE,30A-G (Ref # 26006) | 26006-1067 | 1 |
| FUSE,10A-R (Ref # 26006A) | 26006-1068 | 8 |
| WIRE-LEAD,BATTERY GROUND (Ref # 26011) | 26011-1189 | 1 |
| WIRE-LEAD,BATTERY(+) (Ref # 26011A) | 26011-1352 | 1 |
| BATTERY,YTX7L-BS,12V 6AH (Ref # 26012A) | 26012-1300 | 1 |
| JUNCTION BOX (Ref # 26021A) | 26021-1089 | 1 |
| HARNESS,MAIN (Ref # 26030) | 26030-1351 | 1 |
| RELAY-ASSY,SIGNAL LAMP (Ref # 27002A) | 27002-1092 | 1 |
| HORN (Ref # 27003) | 27003-1288 | 1 |
| COVER-SEAL,FUSE (Ref # 49016A) | 49016-1177 | 1 |
| CLAMP,WIRING HARNESS (Ref # 92037) | 92037-1069 | 5 |
| BAND,L=185 (Ref # 92072C) | 92072-1195 | 7 |
| BAND,L=250 (Ref # 92072D) | 92072-1237 | 1 |
| DAMPER,JUNCTION BOX (Ref # 92075) | 92075-1688 | 1 |