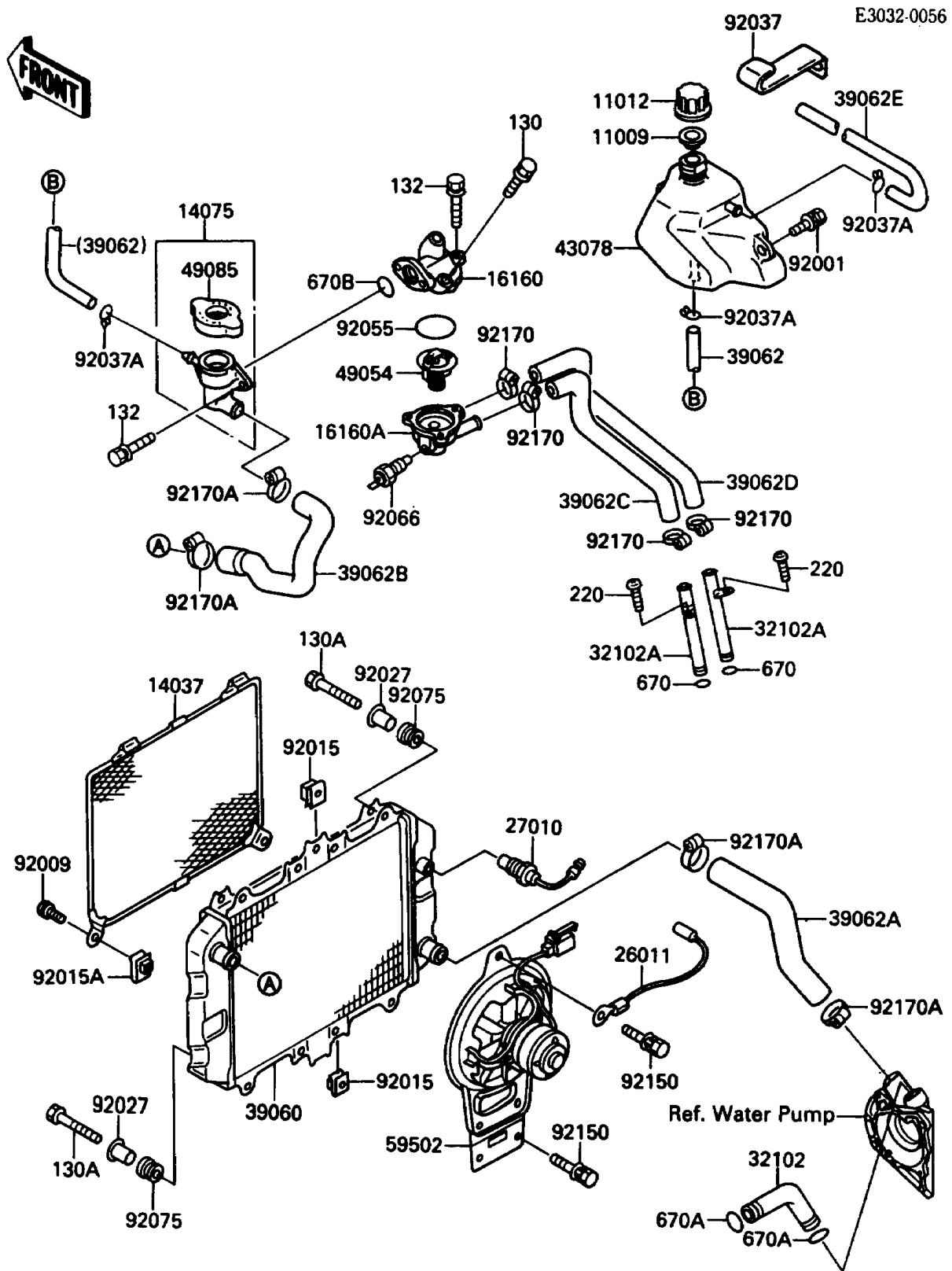


# 1988 EX500 PARTS DIAGRAM

Radiator



# 1988 EX500 PARTS LIST

## Radiator

| ITEM NAME                                  | PART NUMBER | QUANTITY |
|--|-------------|----------|
| GASKET,RESERVOIR TANK CAP (Ref # 11009)    | 11009-1145  | 1        |
| CAP (Ref # 11012)                          | 11012-1084  | 1        |
| SCREEN (Ref # 14037)                       | 14037-1089  | 1        |
| CAP-ASSY,RADIATOR (Ref # 14075)            | 14075-1065  | 1        |
| BODY,THERMOSTAT,UPP (Ref # 16160)          | 16160-1126  | 1        |
| BODY,THERMOSTAT,LWR (Ref # 16160A)         | 16160-1138  | 1        |
| WIRE-LEAD (Ref # 26011)                    | 26011-1361  | 1        |
| SWITCH,FAN (Ref # 27010)                   | 27010-1180  | 1        |
| PIPE,PUMP-CYLINDER (Ref # 32102)           | 32102-1405  | 1        |
| PIPE (Ref # 32102A)                        | 32102-1473  | 2        |
| RADIATOR (Ref # 39060)                     | 39060-1075  | 1        |
| HOSE-COOLING,L=447 (Ref # 39062)           | 39062-1195  | 1        |
| HOSE-COOLING,RADIATOR-PUMP (Ref # 39062A)  | 39062-1222  | 1        |
| HOSE-COOLING,CAP-RADIATOR (Ref # 39062B)   | 39062-1223  | 1        |
| HOSE-COOLING,THERMO-HEAD,LH (Ref # 39062C) | 39062-1224  | 1        |
| HOSE-COOLING,THERMO-HEAD,RH (Ref # 39062D) | 39062-1225  | 1        |
| HOSE-COOLING (Ref # 39062E)                | 39062-1257  | 1        |
| RESERVOIR (Ref # 43078)                    | 43078-1084  | 1        |
| THERMOSTAT (Ref # 49054)                   | 49054-1059  | 1        |
| CAP-ASSY-PRESSURE (Ref # 49085)            | 49085-1005  | 1        |
| FAN-ASSY (Ref # 59502)                     | 59502-1070  | 1        |
| BOLT,W/WASHER,6X12 (Ref # 92001)           | 92001-1516  | 2        |
| SCREW,6X12 (Ref # 92009)                   | 92009-1480  | 2        |
| NUT (Ref # 92015)                          | 92015-1487  | 3        |
| NUT,6MM (Ref # 92015A)                     | 92015-1582  | 2        |
| COLLAR,FLANGED,L=12.1,BLACK (Ref # 92027)  | 92027-1651  | 4        |
| CLAMP,HARNESS (Ref # 92037)                | 92037-1316  | 1        |
| CLAMP,TUBE (Ref # 92037A)                  | 92037-147   | 3        |
| RING-O,44.7X2.4 (Ref # 92055)              | 92055-1279  | 1        |

## 1988 EX500 PARTS LIST

### Radiator

| ITEM NAME                         | PART NUMBER | QUANTITY |
|-----------------------------------|-------------|----------|
| PLUG,SENSOR,WATER (Ref # 92066)   | 92066-1118  | 1        |
| DAMPER (Ref # 92075)              | 92075-277   | 4        |
| BOLT,6X12 (Ref # 92150)           | 92150-1186  | 3        |
| CLAMP,COOLING HOSE (Ref # 92170)  | 92170-1032  | 4        |
| CLAMP,COOLING HOSE (Ref # 92170A) | 92170-1033  | 4        |
| BOLT-FLANGED (Ref # 130)          | 130B0614    | 2        |
| BOLT-FLANGED (Ref # 130A)         | 130J0625    | 4        |
| BOLT-FLANGED-SMALL (Ref # 132)    | 132G0620    | 5        |
| SCREW-PAN-CROS,6X12 (Ref # 220)   | 220B0612    | 2        |
| O RING,14MM (Ref # 670)           | 670B2014    | 2        |
| O RING,18MM (Ref # 670A)          | 670B2018    | 2        |
| O RING,20MM (Ref # 670B)          | 670B2020    | 1        |