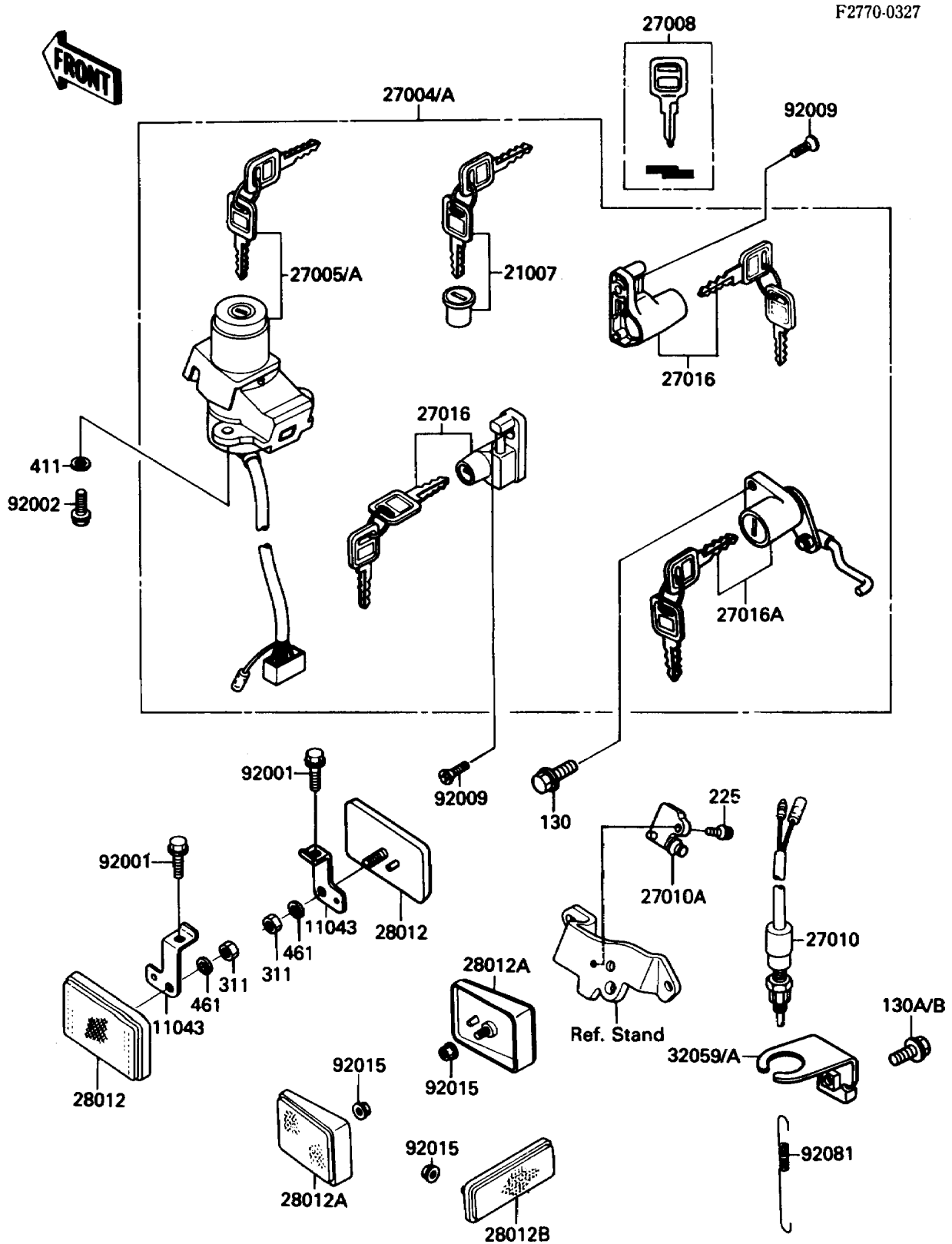


# 1988 EX500 PARTS DIAGRAM

Ignition Switch/Locks/Reflectors



# 1988 EX500 PARTS LIST

## Ignition Switch/Locks/Reflectors

ITEM NAME	PART NUMBER	QUANTITY
BRACKET,FR,REFLECTOR (Ref # 11043)	11043-1423	2
ROTOR,LOCK,TANK CAP (Ref # 21007)	21007-5012	1
SWITCH-ASSY (Ref # 27004A)	27004-5329	1
SWITCH-ASSY-IGNITION (Ref # 27005A)	27005-5074	1
KEY-LOCK,BLANK (Ref # 27008)	27008-1103	1
SWITCH,REAR BRAKE (Ref # 27010)	27010-1019	1
SWITCH,BRAKE/SIDE STAND (Ref # 27010A)	27010-1185	1
LOCK-ASSY,HELMET (Ref # 27016)	27016-5091	2
LOCK-ASSY,SEAT (Ref # 27016A)	27016-5123	1
REFLECTOR-REFLEX (Ref # 28012)	28012-1003	2
REFLECTOR-REFLEX,RR (Ref # 28012A)	28012-1056	2
REFLECTOR-REFLEX (Ref # 28012B)	28012-1057	1
BRACKET-SWITCH,REAR BRAKE (Ref # 32059)	32059-1081	1
BOLT,6X14,BLACK (Ref # 92001)	92001-1847	2
BOLT,TORX,6X16 (Ref # 92002)	92002-1333	2
SCREW,5X18 (Ref # 92009)	92009-1305	2
NUT,FLANGED,5MM (Ref # 92015)	92015-1259	3
SPRING,BRAKE LAMP SWITCH (Ref # 92081)	27011-006	1
BOLT-FLANGED (Ref # 130)	130B0510	2
BOLT-FLANGED (Ref # 130A)	130B0614	1
SCREW-PAN-WSP-CROS (Ref # 225)	225C0416	1
NUT-HEX (Ref # 311)	311B0500	2
WASHER-PLAIN,6MM (Ref # 411)	411E0600	2
WASHER-SPRING,5MM (Ref # 461)	461F0500	2