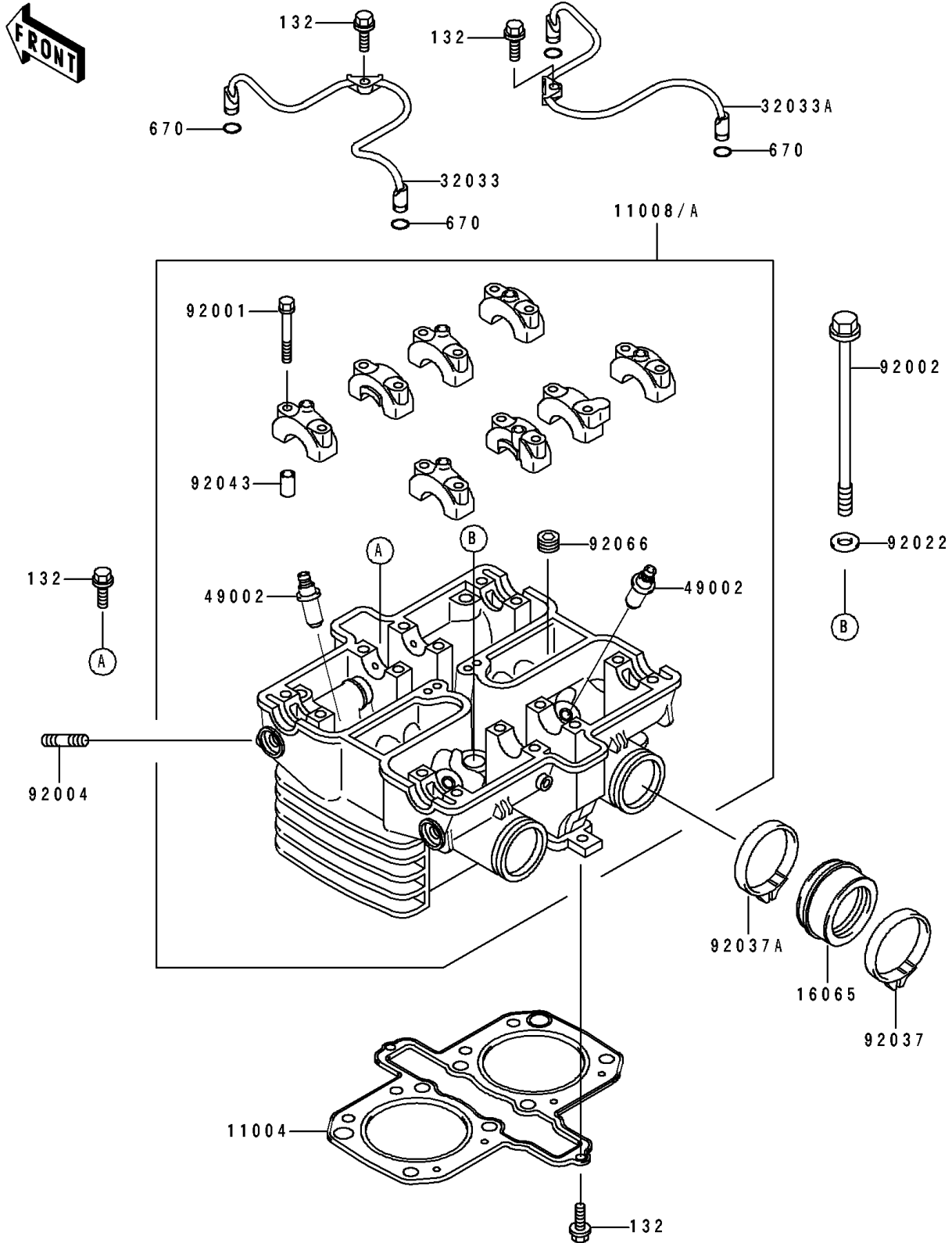


1992 EX500 PARTS DIAGRAM

Cylinder Head

E1111



1992 EX500 PARTS LIST

Cylinder Head

| ITEM NAME | PART NUMBER | QUANTITY |
|-----------------------------------|-------------|----------|
| GASKET-HEAD (Ref # 11004) | 11004-1159 | 1 |
| HEAD-COMP-CYLINDER (Ref # 11008) | 11008-1229 | 1 |
| HEAD-COMP-CYLINDER (Ref # 11008A) | 11008-1230 | 1 |
| HOLDER-CARBURETOR (Ref # 16065) | 16065-1130 | 2 |
| PIPE,OIL,LH (Ref # 32033) | 32033-1527 | 1 |
| PIPE,OIL,RH (Ref # 32033A) | 32033-1528 | 1 |
| GUIDE-VALVE (Ref # 49002) | 49002-1052 | 8 |
| BOLT,6X46 (Ref # 92001) | 92001-1872 | 16 |
| BOLT,10X164 (Ref # 92002) | 92002-1943 | 8 |
| STUD,8X25 (Ref # 92004) | 92004-1008 | 4 |
| WASHER,10.5X20X1.6 (Ref # 92022) | 92022-1591 | 8 |
| CLAMP,ID=53,BLACK (Ref # 92037) | 92037-1304 | 2 |
| CLAMP (Ref # 92037A) | 92037-1523 | 2 |
| PIN,6.2X8X14 (Ref # 92043) | 92043-1263 | 16 |
| PLUG (Ref # 92066) | 92066-1253 | 2 |
| BOLT-FLANGED-SMALL (Ref # 132) | 132G0620 | 4 |
| O RING,7MM (Ref # 670) | 670D1507 | 4 |