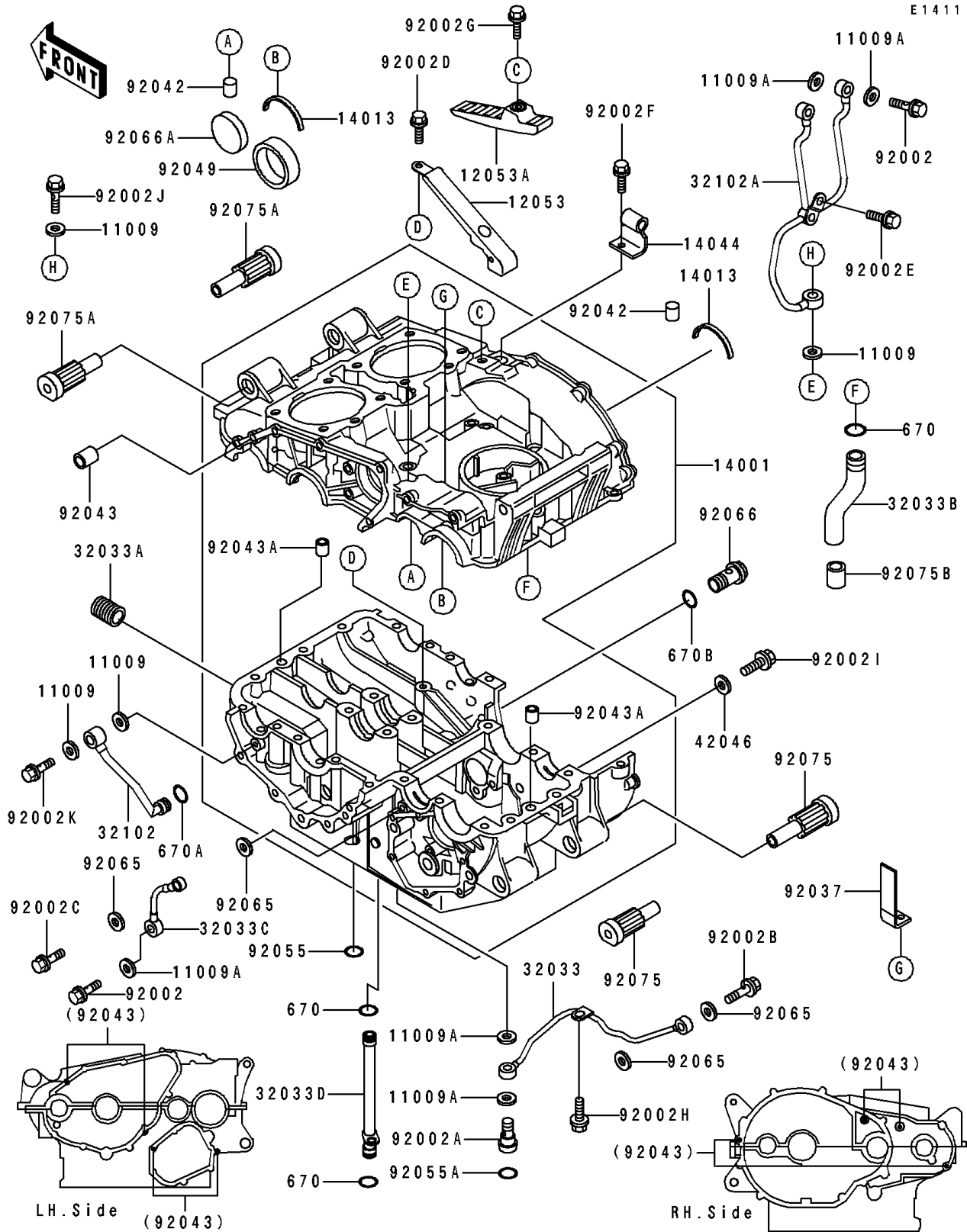


# 1991 EX500 PARTS DIAGRAM

## Crankcase



# 1991 EX500 PARTS LIST

## Crankcase

ITEM NAME	PART NUMBER	QUANTITY
GASKET,10X14.5X1.5 (Ref # 11009)	11009-1105	4
GASKET,OIL PIPE,8.2X14X1.0 (Ref # 11009A)	11009-1344	8
GUIDE-CHAIN,LWR (Ref # 12053)	12053-1216	1
GUIDE-CHAIN,UPP (Ref # 12053A)	12053-1217	1
SET-CRANKCASE (Ref # 14001)	14001-5230	1
RING-POSITION (Ref # 14013)	14013-004	2
HOLDER-CABLE (Ref # 14044)	14044-1059	1
PIPE (Ref # 32033)	32033-1530	1
PIPE (Ref # 32033A)	32033-1535	1
PIPE (Ref # 32033B)	32033-1538	1
PIPE (Ref # 32033C)	32033-1539	1
PIPE (Ref # 32033D)	32033-1574	1
PIPE (Ref # 32102)	32102-1541	1
PIPE (Ref # 32102A)	32102-1710	1
WASHER,6.5X24X1.2 (Ref # 42046)	42046-008	1
BOLT,BANJO,8X20 (Ref # 92002)	92002-1429	3
BOLT (Ref # 92002A)	92002-1467	1
BOLT,BANJO,6X28 (Ref # 92002B)	92002-1471	1
BOLT,BANJO,6X19 (Ref # 92002C)	92002-1473	1
BOLT,6X12 (Ref # 92002D)	92002-1563	2
BOLT,6X12 (Ref # 92002E)	92002-1569	1
BOLT,6X16 (Ref # 92002F)	92002-1570	1
BOLT,6X16 (Ref # 92002G)	92002-1571	1
BOLT,6X12 (Ref # 92002H)	92002-1572	1
BOLT,6X14 (Ref # 92002I)	92002-1656	1
BOLT,OIL,L=23 (Ref # 92002J)	92002-1809	1
BOLT,BANJO,10X30 (Ref # 92002K)	92002-1941	1
CLAMP (Ref # 92037)	92037-1679	1
PIN,DOWEL,6X16 (Ref # 92042)	92042-016	2

# 1991 EX500 PARTS LIST

## Crankcase

ITEM NAME	PART NUMBER	QUANTITY
PIN,6.2X8X14 (Ref # 92043)	92043-1263	8
PIN,8.2X10X14 (Ref # 92043A)	92043-1264	2
SEAL-OIL,AE2343F0 (Ref # 92049)	92049-1070	1
RING-O,OD=18 (Ref # 92055)	92055-048	2
RING-O,OD=13 (Ref # 92055A)	92055-074	1
GASKET (Ref # 92065)	92065-096	4
PLUG,MAIN GALLERY (Ref # 92066)	92066-1205	1
PLUG,RCA 345.5 (Ref # 92066A)	92066-1208	1
DAMPER,L=79.5 (Ref # 92075)	92075-1678	2
DAMPER,L=93 (Ref # 92075A)	92075-1679	2
DAMPER (Ref # 92075B)	92075-1742	1
O RING,10MM (Ref # 670)	670B1510	3
O RING,10MM (Ref # 670A)	670B2010	1
O RING,21MM (Ref # 670B)	670B2021	1