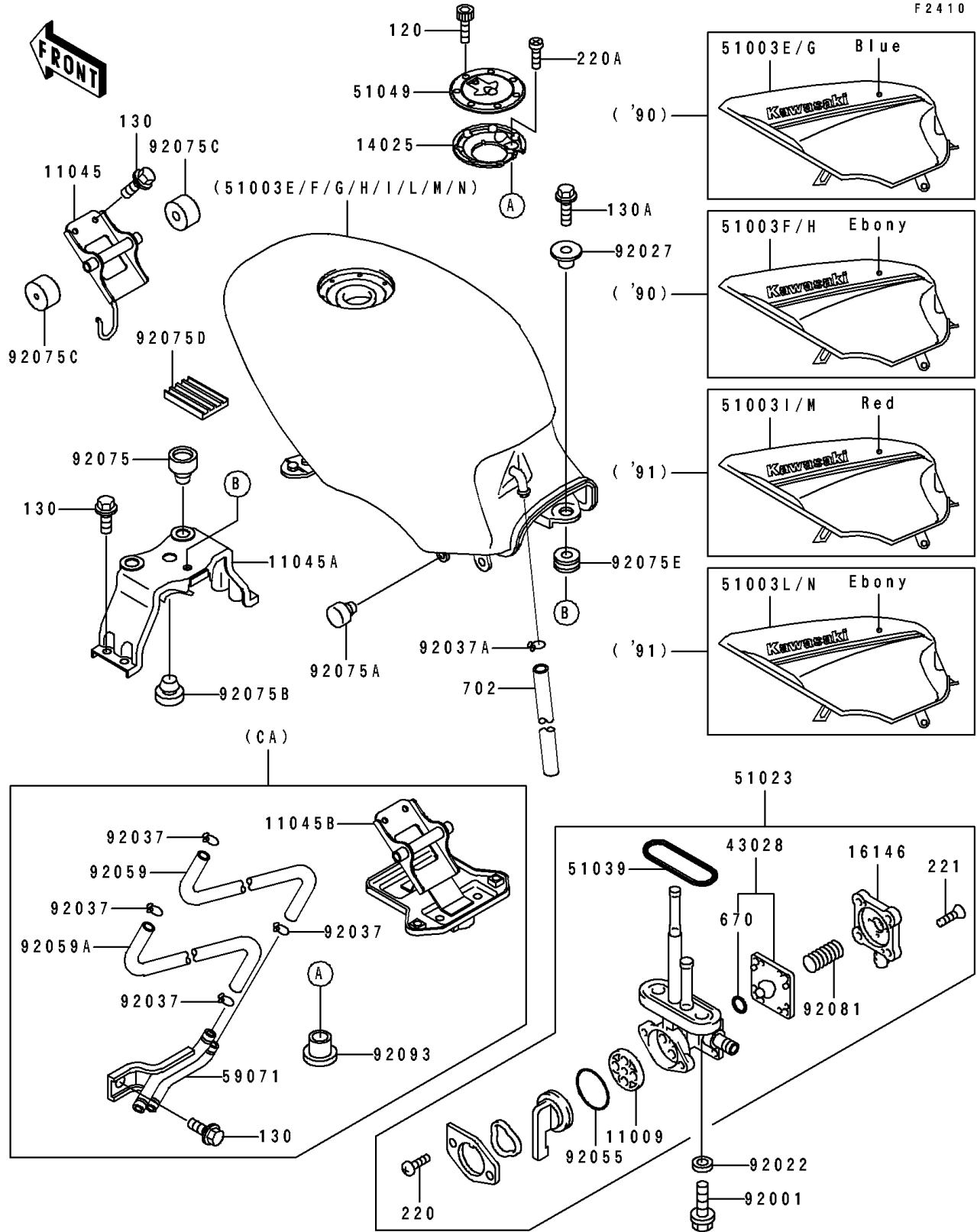


1990 EX500 PARTS DIAGRAM

Fuel Tank(4/4)(EX500-A4/A5)

F 2410



1990 EX500 PARTS LIST

Fuel Tank(4/4)(EX500-A4/A5)

ITEM NAME	PART NUMBER	QUANTITY
GASKET,TAP VALVE (Ref # 11009)	11009-1188	1
BRACKET,FUEL TANK,FR (Ref # 11045)	11045-1362	1
BRACKET,FUEL TANK,RR (Ref # 11045A)	11045-1363	1
BRACKET,FUEL TANK,FR (Ref # 11045B)	11045-1389	1
COVER,TANK CAP (Ref # 14025)	14025-1913	1
COVER-ASSY,TAP DIAPHRAGM (Ref # 16146)	16146-1010	1
DIAPHRAGM (Ref # 43028)	43028-1033	1
TANK-COMP-FUEL,L.P.BLUE (Ref # 51003E)	51003-5074-M4	1
TANK-COMP-FUEL,EBONY (Ref # 51003F)	51003-5075-H8	1
TANK-COMP-FUEL,L.P.BLUE (Ref # 51003G)	51003-5076-M4	1
TANK-COMP-FUEL,EBONY (Ref # 51003H)	51003-5077-H8	1
TAP-ASSY,FUEL (Ref # 51023)	51023-1142	1
RING,TAP FLANGED (Ref # 51039)	51039-003	1
CAP-TANK,FUEL (Ref # 51049)	51049-1091	1
JOINT,EVAPO (Ref # 59071)	59071-1122	1
BOLT,6X20 (Ref # 92001)	92001-1091	2
WASHER,6.2X11X1.5 (Ref # 92022)	92022-183	2
COLLAR,L=19.3 (Ref # 92027)	92027-1780	1
CLAMP,TUBE (Ref # 92037)	92037-010	4
CLAMP (Ref # 92037A)	92037-1712	1
RING-O,TAP LEVER (Ref # 92055)	92055-1085	1
TUBE,EVAPO (Ref # 92059)	92059-1767	1
TUBE,EVAPO (Ref # 92059A)	92059-1768	1
DAMPER (Ref # 92075)	92075-015	2
DAMPER (Ref # 92075A)	92075-021	2
DAMPER (Ref # 92075B)	92075-1045	1
DAMPER,FUEL TANK,FR (Ref # 92075C)	92075-1115	2
DAMPER (Ref # 92075D)	92075-1489	2
DAMPER (Ref # 92075E)	92075-1736	1

1990 EX500 PARTS LIST

Fuel Tank(4/4)(EX500-A4/A5)

ITEM NAME	PART NUMBER	QUANTITY
SPRING,TAP DIAPHRAGM (Ref # 92081)	92081-1240	1
SEAL,FUEL TANK CAP (Ref # 92093)	92093-1030	1
BOLT-SOCKET (Ref # 120)	120S0512	7
BOLT-FLANGED,6X12 (Ref # 130)	130B0612	7
BOLT-FLANGED,6X12 (Ref # 130)	130B0612	6
BOLT-FLANGED,8X30 (Ref # 130A)	130G0830	1
SCREW-PAN-CROS (Ref # 220)	220B0308	2
SCREW-PAN-CROS (Ref # 220A)	220C0508	1
SCREW-CSK-CROS,4X14 (Ref # 221)	221B0414	4
O RING,4MM (Ref # 670)	670B1504	1
TUBE-RUBBER,7X10X380 (Ref # 702)	702A07380	1