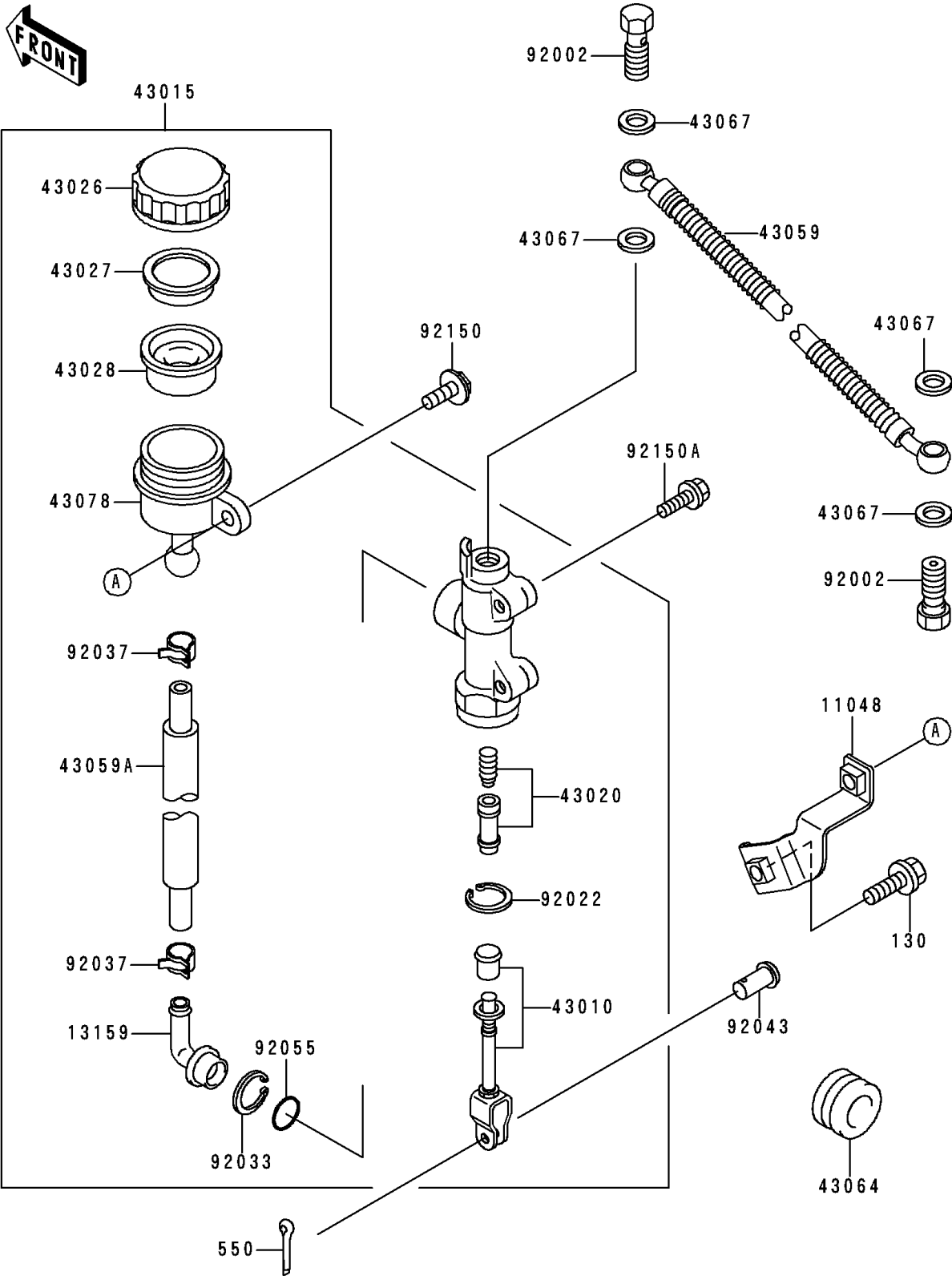


# 1994 Ninja® 500 PARTS DIAGRAM

Rear Master Cylinder

F2293



# 1994 Ninja® 500 PARTS LIST

## Rear Master Cylinder

| ITEM NAME                                    | PART NUMBER | QUANTITY |
|--|-------------|----------|
| BOLT-FLANGED (Ref # 130)                     | 130J0612    | 1        |
| PIN-COTTER,2.0X15 (Ref # 550)                | 550D2015    | 1        |
| BRACKET,RESERVOIR TANK (Ref # 11048)         | 11048-1363  | 1        |
| CONNECTOR (Ref # 13159)                      | 13159-1056  | 1        |
| ROD-ASSY-BRAKE (Ref # 43010)                 | 43010-1055  | 1        |
| CYLINDER-ASSY-MASTER,RR (Ref # 43015)        | 43015-1555  | 1        |
| PISTON-COMP-BRAKE (Ref # 43020)              | 43020-1094  | 1        |
| CAP-BRAKE (Ref # 43026)                      | 43026-1077  | 1        |
| PLATE-DIAPHRAGM (Ref # 43027)                | 43027-1053  | 1        |
| DIAPHRAGM (Ref # 43028)                      | 43028-1065  | 1        |
| HOSE-BRAKE,RR (Ref # 43059)                  | 43059-1779  | 1        |
| HOSE-BRAKE,RR MASTER CYLINDER (Ref # 43059A) | 43059-1780  | 1        |
| GROMMET,HOSE CLAMP (Ref # 43064)             | 43064-007   | 1        |
| WASHER,10.5X15X1.5 (Ref # 43067)             | 43067-001   | 4        |
| RESERVOIR (Ref # 43078)                      | 43078-1080  | 1        |
| BOLT,OIL,L=23 (Ref # 92002)                  | 92002-1907  | 2        |
| WASHER,CIRCRIP (Ref # 92022)                 | 92022-1601  | 1        |
| RING-SNAP,20.5MM (Ref # 92033)               | 92033-1186  | 1        |
| CLAMP (Ref # 92037)                          | 92037-1710  | 2        |
| PIN,8MM (Ref # 92043)                        | 92043-1303  | 1        |
| RING-O,MASTER CYLINDER (Ref # 92055)         | 92055-1251  | 1        |
| BOLT (Ref # 92150)                           | 92150-1198  | 1        |
| BOLT,SOCKET,8X30 (Ref # 92150A)              | 92150-1843  | 2        |