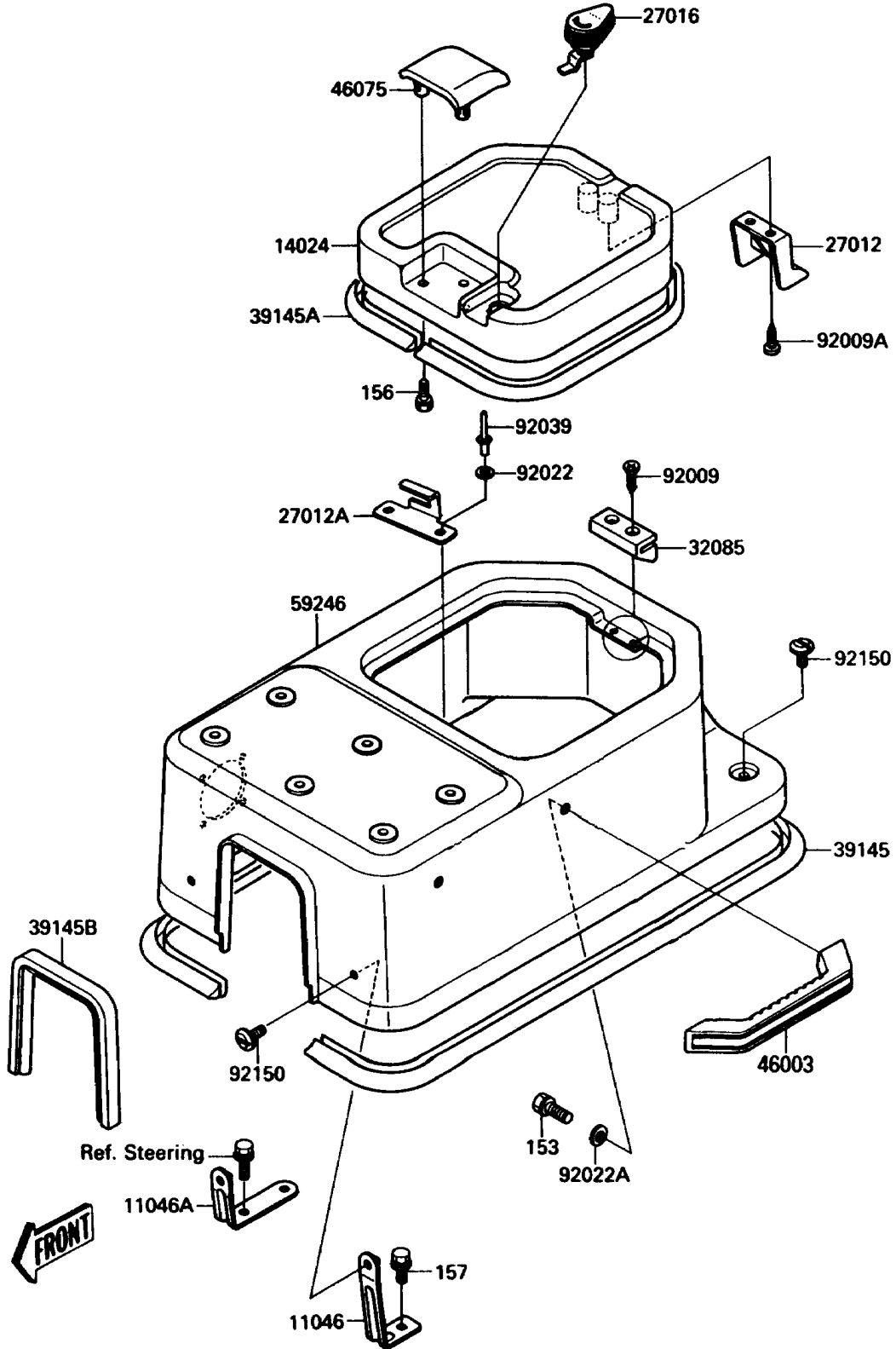


1990 Jet Mate PARTS DIAGRAM

Engine Hood

(F3142)



1990 Jet Mate PARTS LIST

Engine Hood

| ITEM NAME | PART NUMBER | QUANTITY |
|--|---------------|----------|
| BRACKET,ENGINE HOOD,LH (Ref # 11046) | 11046-3766 | 1 |
| BRACKET,ENGINE HOOD,RH (Ref # 11046A) | 11046-3767 | 1 |
| COVER,ENGINE HOOD,P.WHITE (Ref # 14024) | 14024-3766-F1 | 1 |
| HOOK,ENGINE HOOD COVER (Ref # 27012) | 27012-3745 | 1 |
| HOOK,LOCK (Ref # 27012A) | 27012-3748 | 1 |
| LOCK-ASSY (Ref # 27016) | 27016-3712 | 1 |
| STOPPER,ENGINE HOOD (Ref # 32085) | 32085-3715 | 1 |
| TRIM-SEAL (Ref # 39145) | 39145-3711 | 1 |
| TRIM-SEAL (Ref # 39145A) | 39145-3712 | 1 |
| TRIM-SEAL (Ref # 39145B) | 39145-3717 | 1 |
| GRIP (Ref # 46003) | 46003-2054 | 1 |
| GRIP,ENGINE HOOD COVER,P.WHITE (Ref # 46075) | 46075-3718-F1 | 1 |
| HOOD-ENGINE,P.WHITE (Ref # 59246) | 59246-3715-BP | 1 |
| SCREW,TAPPING,4X14 (Ref # 92009) | 92009-3755 | 2 |
| SCREW,TAPPING,5X20 (Ref # 92009A) | 92009-3756 | 2 |
| WASHER,5X16X1.5 (Ref # 92022) | 92022-3041 | 2 |
| WASHER,8.5X19X1.2 (Ref # 92022A) | 92022-3730 | 2 |
| RIVET,4.8MM (Ref # 92039) | 92039-3719 | 2 |
| BOLT,6X14 (Ref # 92150) | 92150-3732 | 4 |
| BOLT-WS-SMALL,8X18 (Ref # 153) | 153R0818 | 2 |
| BOLT-WP,5X16 (Ref # 156) | 156R0516 | 3 |
| BOLT-WSP,6X16 (Ref # 157) | 157R0616 | 1 |