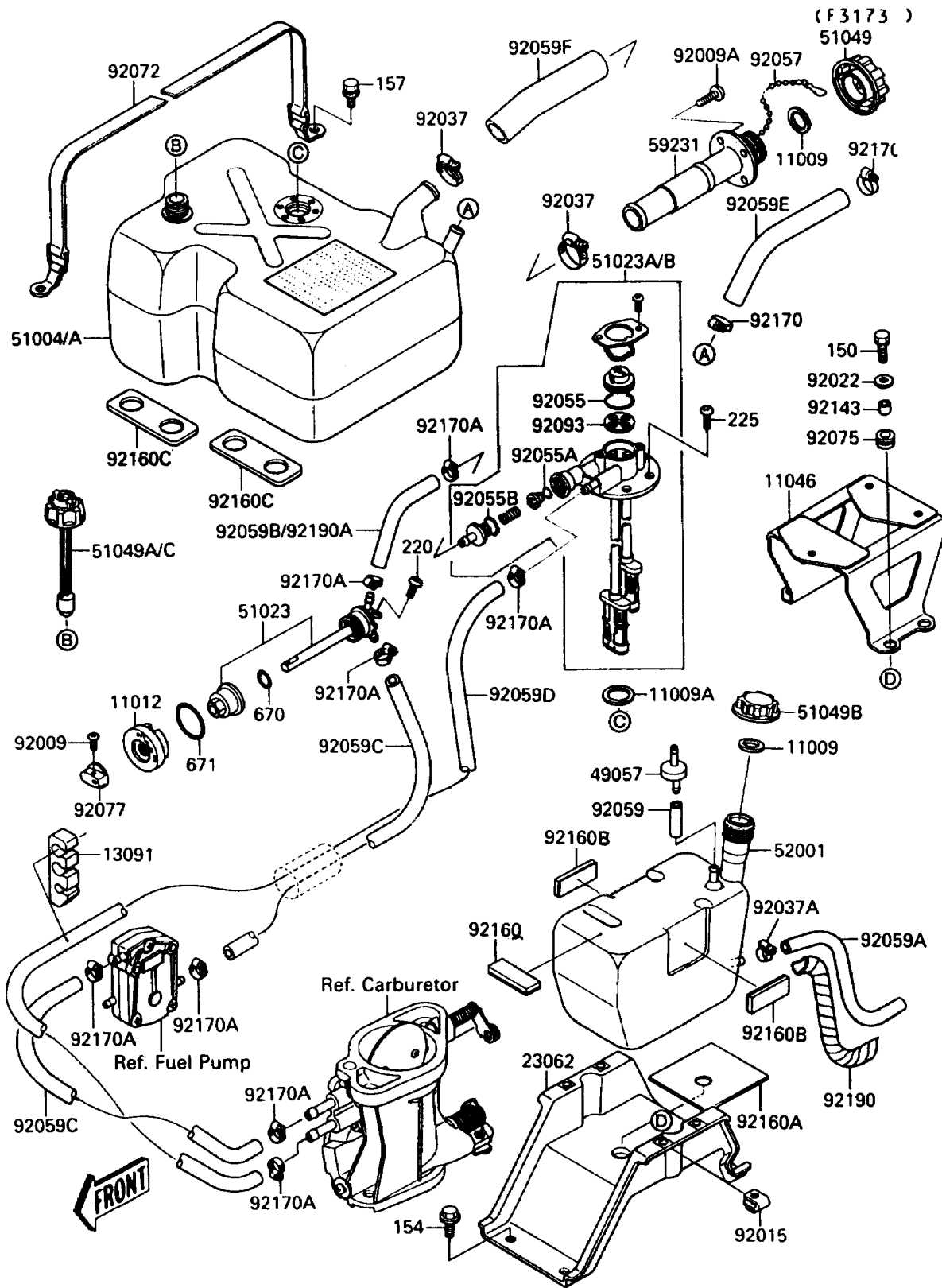


# 1989 Jet Mate PARTS DIAGRAM

Fuel Tank



# 1989 Jet Mate PARTS LIST

## Fuel Tank

ITEM NAME	PART NUMBER	QUANTITY
GASKET,TANK CAP (Ref # 11009)	11009-3020	2
GASKET (Ref # 11009A)	92065-504	1
CAP,FUEL TAP (Ref # 11012)	11012-3728	1
BRACKET,ELECTRIC (Ref # 11046)	11046-3756	1
HOLDER,TUBE (Ref # 13091)	13091-3745	2
BRACKET-COMP,OIL TANK (Ref # 23062)	23062-3701	1
VALVE-RELIEF (Ref # 49057)	49057-3001	1
TANK-FUEL (Ref # 51004)	51004-3711	1
TAP-ASSY,FUEL (Ref # 51023)	51023-3707	1
TAP-ASSY,FUEL (Ref # 51023A)	51023-3710	1
CAP-TANK,FUEL (Ref # 51049)	51049-3705	1
CAP-TANK,FUEL GAUGE (Ref # 51049A)	51049-3713	1
CAP-TANK,OIL (Ref # 51049B)	51049-3716	1
TANK-OIL (Ref # 52001)	52001-3710	1
FILLER (Ref # 59231)	59231-3711	1
SCREW,4X8 (Ref # 92009)	92009-3729	1
SCREW,6X20 (Ref # 92009A)	92009-3763	4
NUT,6MM (Ref # 92015)	92015-3763	4
WASHER,6.5X20X1.5 (Ref # 92022)	92022-3710	4
CLAMP (Ref # 92037)	92037-3009	4
CLAMP (Ref # 92037A)	92037-3726	1
RING-O (Ref # 92055)	92055-3722	1
RING-O (Ref # 92055A)	92055-3723	1
RING-O (Ref # 92055B)	92055-3724	1
CHAIN,COVER,L=100 (Ref # 92057)	92057-3704	1
TUBE,5.8X12.2X55 (Ref # 92059)	92059-3026	1
TUBE,5.8X10.8X360 (Ref # 92059A)	92059-3743	1
TUBE,6.35X16X210 (Ref # 92059B)	92059-3839	1
TUBE,6.35X16X510 (Ref # 92059C)	92059-3840	2

# 1989 Jet Mate PARTS LIST

## Fuel Tank

ITEM NAME	PART NUMBER	QUANTITY
TUBE,6.35X16X1340 (Ref # 92059D)	92059-3841	1
TUBE,15.9X25.8X110 (Ref # 92059E)	92059-3842	1
TUBE,38.1X51X125 (Ref # 92059F)	92059-3844	1
BAND (Ref # 92072)	92072-3726	2
DAMPER (Ref # 92075)	92075-076	4
KNOB (Ref # 92077)	92077-3709	1
SEAL (Ref # 92093)	92093-3727	1
COLLAR,7.5X10.5X9 (Ref # 92143)	92143-3714	4
DAMPER (Ref # 92160)	92160-1004	2
DAMPER (Ref # 92160A)	92160-3719	1
DAMPER (Ref # 92160B)	92160-3720	2
DAMPER (Ref # 92160C)	92160-3722	4
CLAMP,COOLING HOSE (Ref # 92170)	92037-1989	2
CLAMP (Ref # 92170A)	92170-3720	10
TUBE (Ref # 92190)	92190-3705	1
BOLT-WS,6X25 (Ref # 150)	150R0625	4
BOLT-WP-SMALL,8X18 (Ref # 154)	154R0818	3
BOLT-WSP,6X14 (Ref # 157)	157R0614	4
SCREW-PAN-CROS,6X12 (Ref # 220)	220R0612	1
SCREW-PAN-WSP-CROS,5X16 (Ref # 225)	225R0516	6
O RING,8MM (Ref # 670)	670B1508	1
O RING,65MM (Ref # 671)	671B2565	1