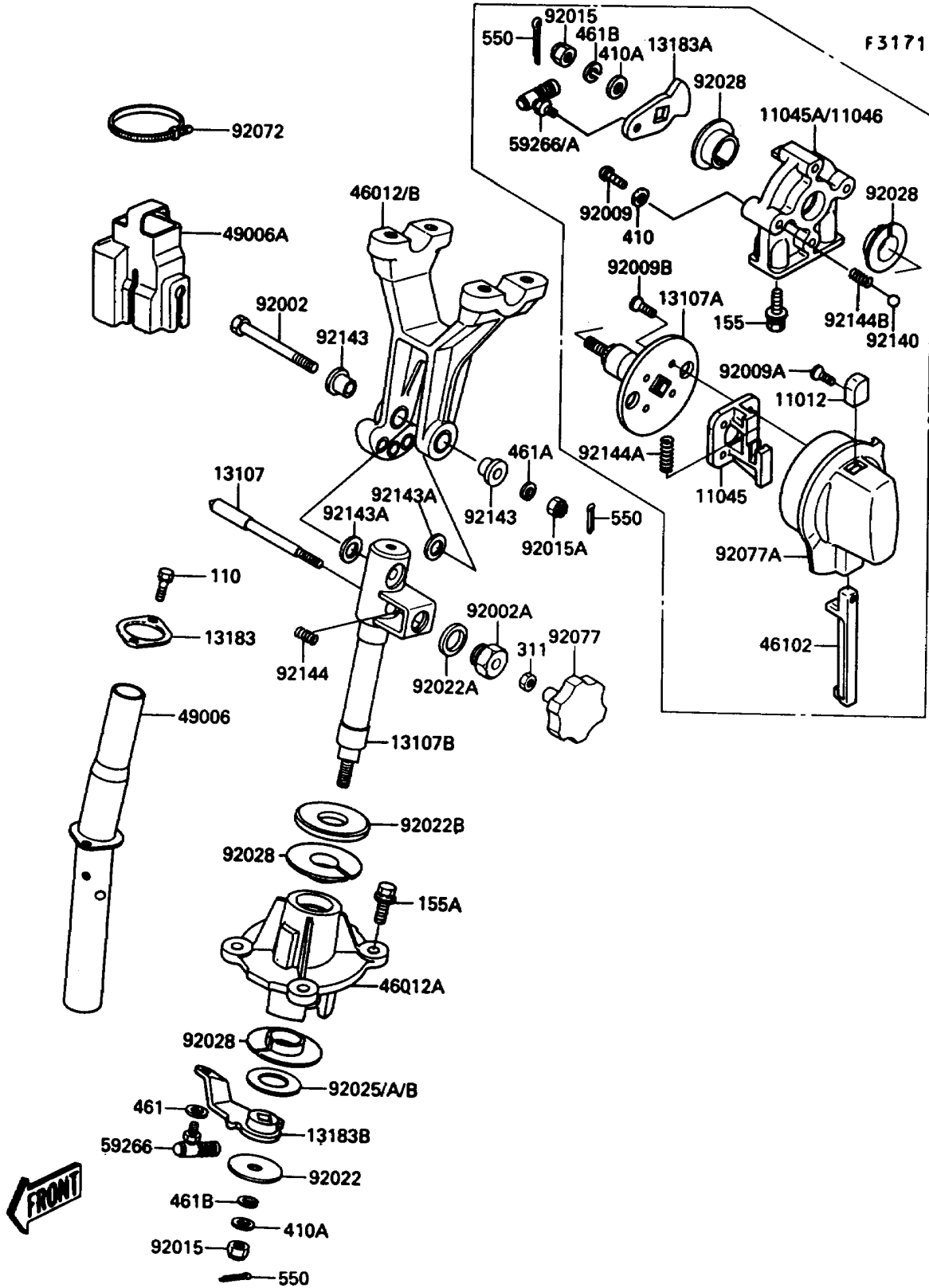


1990 X2 PARTS DIAGRAM

Handle Pole



1990 X2 PARTS LIST

Handle Pole

ITEM NAME	PART NUMBER	QUANTITY
CAP,TILT NOZZLE (Ref # 11012)	11012-3716	1
BRACKET,TILT KNOB (Ref # 11045)	11045-3753	1
SHAFT,STEERING ADJUST (Ref # 13107)	13107-3706	1
SHAFT,TILT NOZZLE (Ref # 13107A)	13107-3711	1
SHAFT,STEERING (Ref # 13107B)	13107-3717	1
PLATE,T=2MM (Ref # 13183)	13169-3712	1
PLATE (Ref # 13183A)	13183-3725	1
PLATE,STEERING (Ref # 13183B)	13183-3765	1
HOLDER-HANDLE,H=75MM (Ref # 46012)	46012-3702	1
HOLDER-HANDLE (Ref # 46012A)	46012-3703	1
HOLDER-HANDLE,H=115MM (Ref # 46012B)	46012-3709	1
ROD,TILT NOZZLE KNOB (Ref # 46102)	46102-3708	1
BOOT,CABLE&HARNESS (Ref # 49006)	49006-3705	1
BOOT,HANDLE HOLDER (Ref # 49006A)	49006-3707	1
JOINT-BALL (Ref # 59266)	59266-3701	2
BOLT,8X73.5 (Ref # 92002)	92002-3733	1
BOLT,16X10 (Ref # 92002A)	92002-3734	1
SCREW,3X8 (Ref # 92009A)	92009-3731	1
SCREW,5X16 (Ref # 92009B)	92009-3732	4
NUT,CASTLE,10MM (Ref # 92015)	92015-3718	2
NUT,CASTLE,8MM (Ref # 92015A)	92015-3719	1
WASHER,10.5X40X4 (Ref # 92022)	92022-3724	1
WASHER,16.5X26X4 (Ref # 92022A)	92022-3727	1
WASHER (Ref # 92022B)	92022-3757	1
SHIM,21X40X0.3 (Ref # 92025)	92025-3712	AR
SHIM,21X40X0.5 (Ref # 92025A)	92025-3713	AR
SHIM,21X40X1.0 (Ref # 92025B)	92025-3714	AR
BUSHING (Ref # 92028)	92028-3722	4
BAND,L=292.1 (Ref # 92072)	92072-3509	1

1990 X2 PARTS LIST

Handle Pole

ITEM NAME	PART NUMBER	QUANTITY
KNOB,STEERING SHAFT (Ref # 92077)	92077-3705	1
KNOB,TILT NOZZLE (Ref # 92077A)	92077-3711	1
BALL,6.35MM (Ref # 92140)	92140-3703	2
COLLAR,L=18 (Ref # 92143)	92143-3701	2
COLLAR,14.2X20X3.8 (Ref # 92143A)	92143-3703	2
SPRING (Ref # 92144)	92081-3707	1
BOLT,5X16 (Ref # 110)	110R0516	2
BOLT-WSP-SMALL,8X25 (Ref # 155)	155R0825	2
BOLT-WSP-SMALL,8X30 (Ref # 155A)	155R0830	4
NUT-HEX,6MM (Ref # 311)	311R0600	1
W-PLAIN-S,10MM (Ref # 410A)	410S1000	2
WASHER-SPRING,6MM (Ref # 461)	461S0600	1
WASHER-SPRING,8MM (Ref # 461A)	461S0800	1
WASHER-SPRING,10MM (Ref # 461B)	461S1000	2
PIN-COTTER (Ref # 550)	550S2020	3
SPRING (Ref # 92144A)	92144-3701	1
SPRING (Ref # 92144B)	92144-3708	2
BRACKET,TILT NOZZLE (Ref # 11046)	11046-3848	1