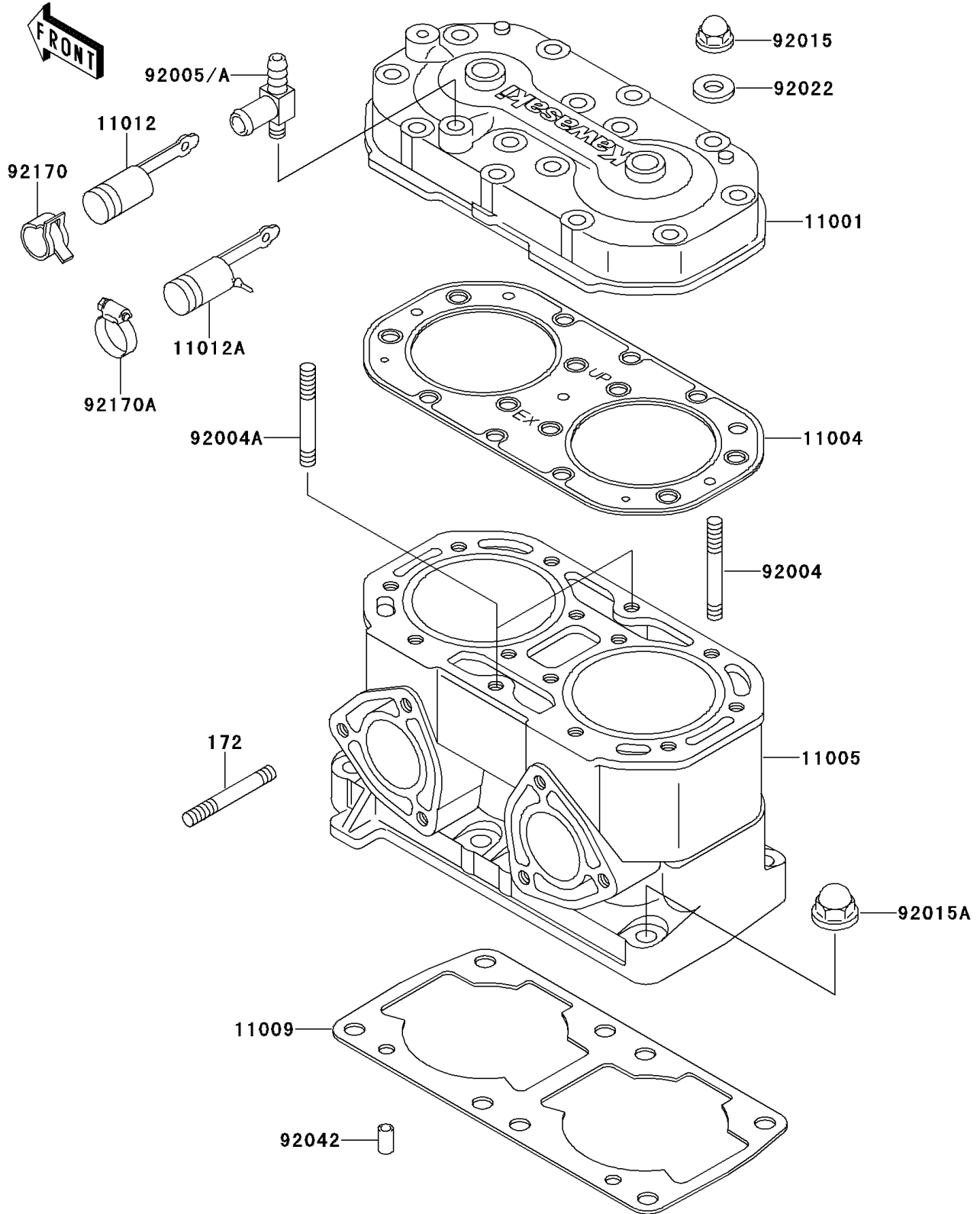


# 1992 X2 PARTS DIAGRAM

Cylinder Head/Cylinder

E1110



## 1992 X2 PARTS LIST

### Cylinder Head/Cylinder

| ITEM NAME                          | PART NUMBER | QUANTITY |
|------------------------------------|-------------|----------|
| BOLT-STUD (Ref # 172)              | 172R0830    | 6        |
| HEAD-CYLINDER (Ref # 11001)        | 11001-3716  | 1        |
| GASKET-HEAD (Ref # 11004)          | 11004-3710  | 1        |
| CYLINDER-ENGINE (Ref # 11005)      | 11005-3715  | 1        |
| GASKET,CYLINDER BASE (Ref # 11009) | 11009-3775  | 1        |
| CAP (Ref # 11012A)                 | 11012-3757  | 1        |
| STUD,8X43 (Ref # 92004)            | 92004-3715  | 12       |
| STUD,8X43 (Ref # 92004A)           | 92004-3719  | 2        |
| FITTING (Ref # 92005A)             | 92005-3711  | 1        |
| NUT,CAP,8MM (Ref # 92015)          | 92015-1371  | 14       |
| NUT,10MM (Ref # 92015A)            | 92015-1649  | 8        |
| WASHER,8.2X18X1.5 (Ref # 92022)    | 92022-1964  | 14       |
| PIN,DOWEL,6.3X8X14 (Ref # 92042)   | 92042-007   | 2        |
| CLAMP (Ref # 92170A)               | 92170-3729  | 1        |