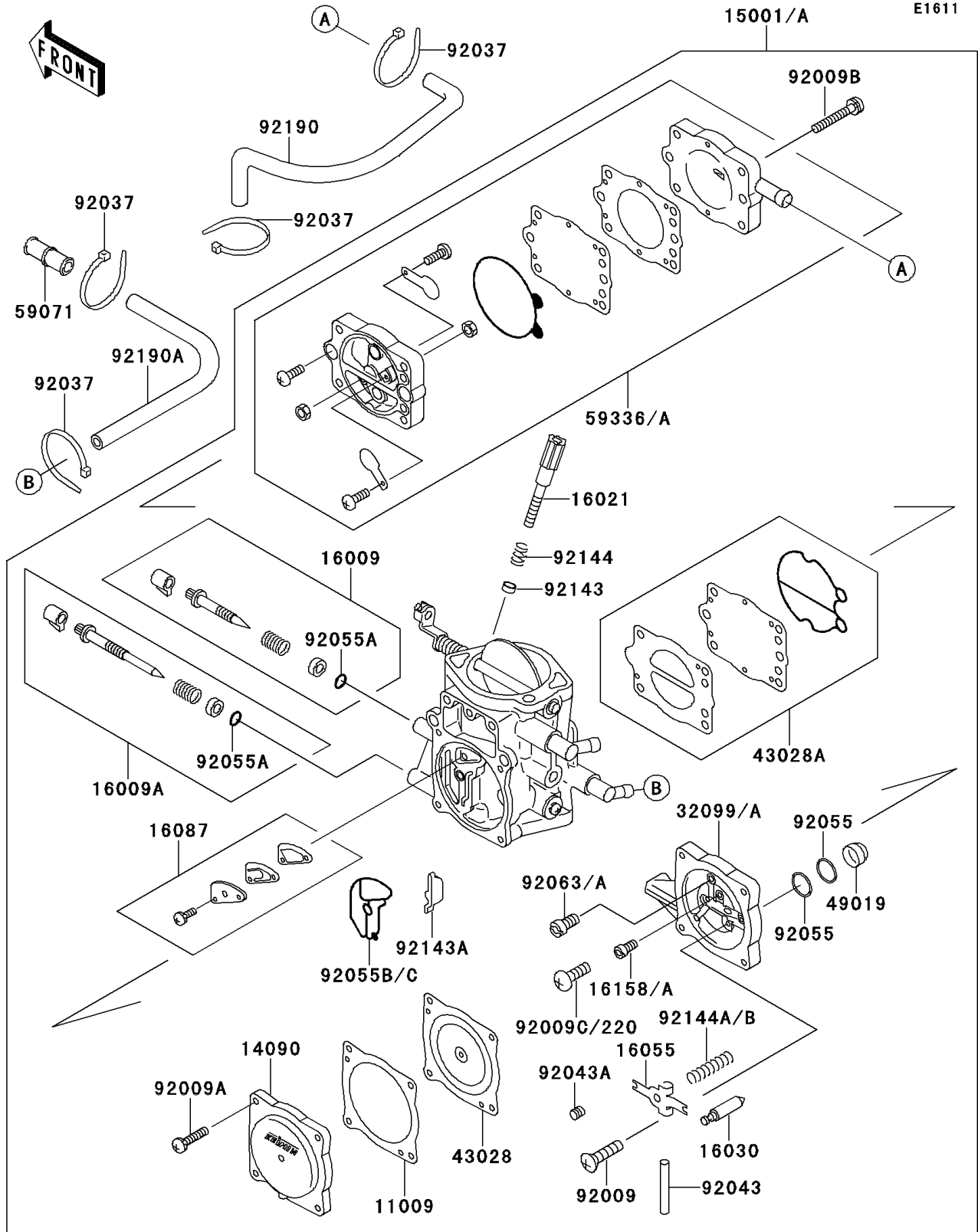


1991 X2 PARTS DIAGRAM

Carburetor



1991 X2 PARTS LIST

Carburetor

| ITEM NAME | PART NUMBER | QUANTITY |
|--|-------------|----------|
| GASKET,DIAPHRAGM (Ref # 11009) | 11009-3730 | 1 |
| COVER,DIAPHRAGM (Ref # 14090) | 14090-3702 | 1 |
| CARBURETOR-ASSY (Ref # 15001) | 15001-3757 | 1 |
| NEEDLE-JET,MAIN (Ref # 16009) | 16009-3711 | 1 |
| NEEDLE-JET,SLOW (Ref # 16009A) | 16009-3712 | 1 |
| SCREW-THROTTLE STOP (Ref # 16021) | 16021-3702 | 1 |
| VALVE-FLOAT (Ref # 16030) | 16030-3701 | 1 |
| ARM-FLOAT (Ref # 16055) | 16055-3701 | 1 |
| VALVE-CHECK (Ref # 16087) | 16087-3703 | 1 |
| JET-SLOW,#75 (Ref # 16158) | 16158-3705 | 1 |
| CASE,CARBURETOR (Ref # 32099) | 32099-3754 | 1 |
| DIAPHRAGM,CARBURETOR (Ref # 43028) | 43028-3704 | 1 |
| DIAPHRAGM,PUMP (Ref # 43028A) | 43028-3706 | 1 |
| FILTER-FUEL,STRAINER (Ref # 49019) | 49019-3707 | 1 |
| JOINT,MANIFOLD (Ref # 59071) | 59071-3725 | 1 |
| CASE-PUMP (Ref # 59336) | 59336-3709 | 1 |
| SCREW,3X6 (Ref # 92009) | 92009-3712 | 1 |
| SCREW,4X18 (Ref # 92009A) | 92009-3782 | 4 |
| SCREW,5X28 (Ref # 92009B) | 92009-3783 | 4 |
| CLAMP (Ref # 92037) | 92037-1173 | 4 |
| PIN,FLOAT (Ref # 92043) | 92043-1209 | 1 |
| PIN,THROTTLE STOP SCREW (Ref # 92043A) | 92043-3712 | 1 |
| RING-O (Ref # 92055) | 92055-1246 | 2 |
| RING-O,ADJUST SCREW (Ref # 92055A) | 92055-3713 | 2 |
| RING-O (Ref # 92055B) | 92055-3734 | 1 |
| JET-MAIN,#140 (Ref # 92063) | 92063-3701 | 1 |
| COLLAR,THROTTLE STOP SCREW (Ref # 92143) | 92143-3709 | 1 |
| COLLAR (Ref # 92143A) | 92143-3727 | 1 |
| SPRING,THROTTLE STOP SCREW (Ref # 92144) | 92144-3706 | 1 |

1991 X2 PARTS LIST

Carburetor

| ITEM NAME | PART NUMBER | QUANTITY |
|---------------------------------|-------------|----------|
| SPRING,FLOAT ARM (Ref # 92144A) | 92144-3733 | 1 |
| TUBE,PULSE (Ref # 92190) | 92190-3730 | 1 |
| SCREW-PAN-CROS (Ref # 220) | 220D0408 | 1 |
| TUBE,7X12X270 (Ref # 92190A) | 92190-3872 | 1 |