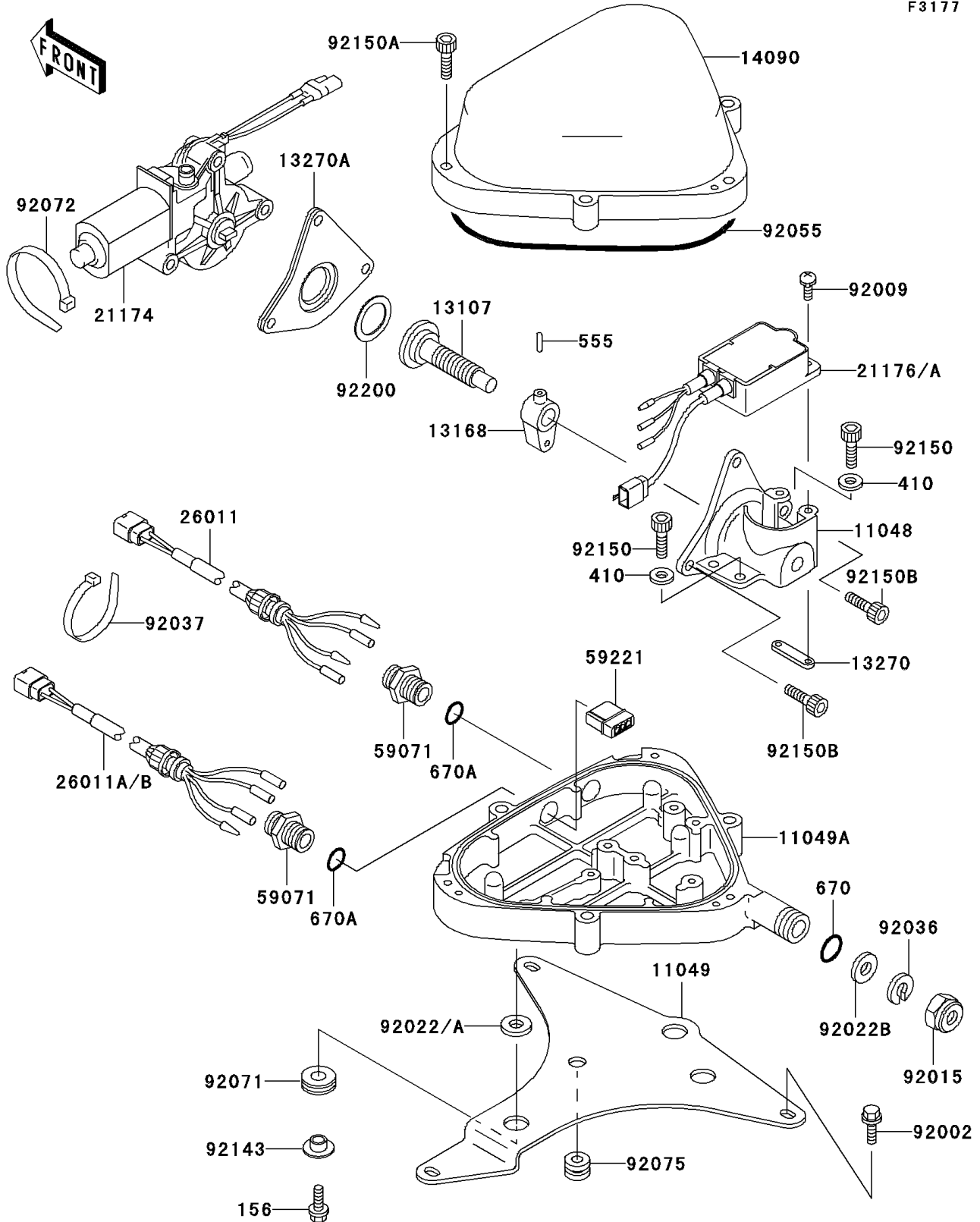


# 1996 1100 ZXi PARTS DIAGRAM

Control

F3177



# 1996 1100 ZXi PARTS LIST

## Control

ITEM NAME	PART NUMBER	QUANTITY
BOLT-WP,6X22 (Ref # 156)	156R0622	3
WASHER-PLAIN-SMALL,6MM (Ref # 410)	410S0600	4
PIN-SPRING,3X14 (Ref # 555)	555B0314	1
O RING,11MM (Ref # 670)	670B2011	1
O RING,16MM (Ref # 670A)	670B2016	2
BRACKET,MOTOR MOUNT (Ref # 11048)	11048-3738	1
BRACKET,TILT BOX (Ref # 11049)	11049-3712	1
BRACKET,MOTOR BOX,LWR (Ref # 11049A)	11049-3715	1
SHAFT (Ref # 13107)	13107-3748	1
LEVER,SLIDE (Ref # 13168)	13168-3730	1
PLATE,TRIM SENSOR (Ref # 13270)	13270-3744	1
PLATE,MOTOR MOUNT (Ref # 13270A)	13270-3822	1
COVER,MOTOR BOX,UPP (Ref # 14090)	14090-3768	1
MOTOR-ELECTRIC (Ref # 21174)	21174-3703	1
SENSOR,TRIM METER (Ref # 21176)	21176-3718	1
WIRE-LEAD,TRIM SWITCH (Ref # 26011)	26011-3835	1
WIRE-LEAD,TRIM METER (Ref # 26011A)	26011-3836	1
JOINT (Ref # 59071)	59071-3001	2
CONNECTOR-CORD (Ref # 59221)	59221-3709	1
BOLT,6X16 (Ref # 92002)	92002-3728	3
SCREW,4X12 (Ref # 92009)	92009-3807	2
NUT,20MM (Ref # 92015)	92015-526	1
WASHER,6.2X20X2 (Ref # 92022A)	92022-3714	3
WASHER (Ref # 92022B)	92022-535	1
RING-SNAP (Ref # 92036)	92036-501	1
CLAMP (Ref # 92037)	92037-1173	3
RING-O,ID=171 (Ref # 92055)	92055-3737	1
GROMMET (Ref # 92071)	92071-3737	3
BAND (Ref # 92072)	92072-3778	1

# 1996 1100 ZXi PARTS LIST

## Control

ITEM NAME	PART NUMBER	QUANTITY
DAMPER,METER BRACKET (Ref # 92075)	92075-1435	1
COLLAR (Ref # 92143)	92143-3749	3
BOLT,SOCKET,6X18 (Ref # 92150)	92150-3775	4
BOLT,SOCKET,6X30 (Ref # 92150A)	92150-3822	6
BOLT,SOCKET,6X25 (Ref # 92150B)	92150-3823	3
WASHER,22.5X32X1 (Ref # 92200)	92200-3742	1