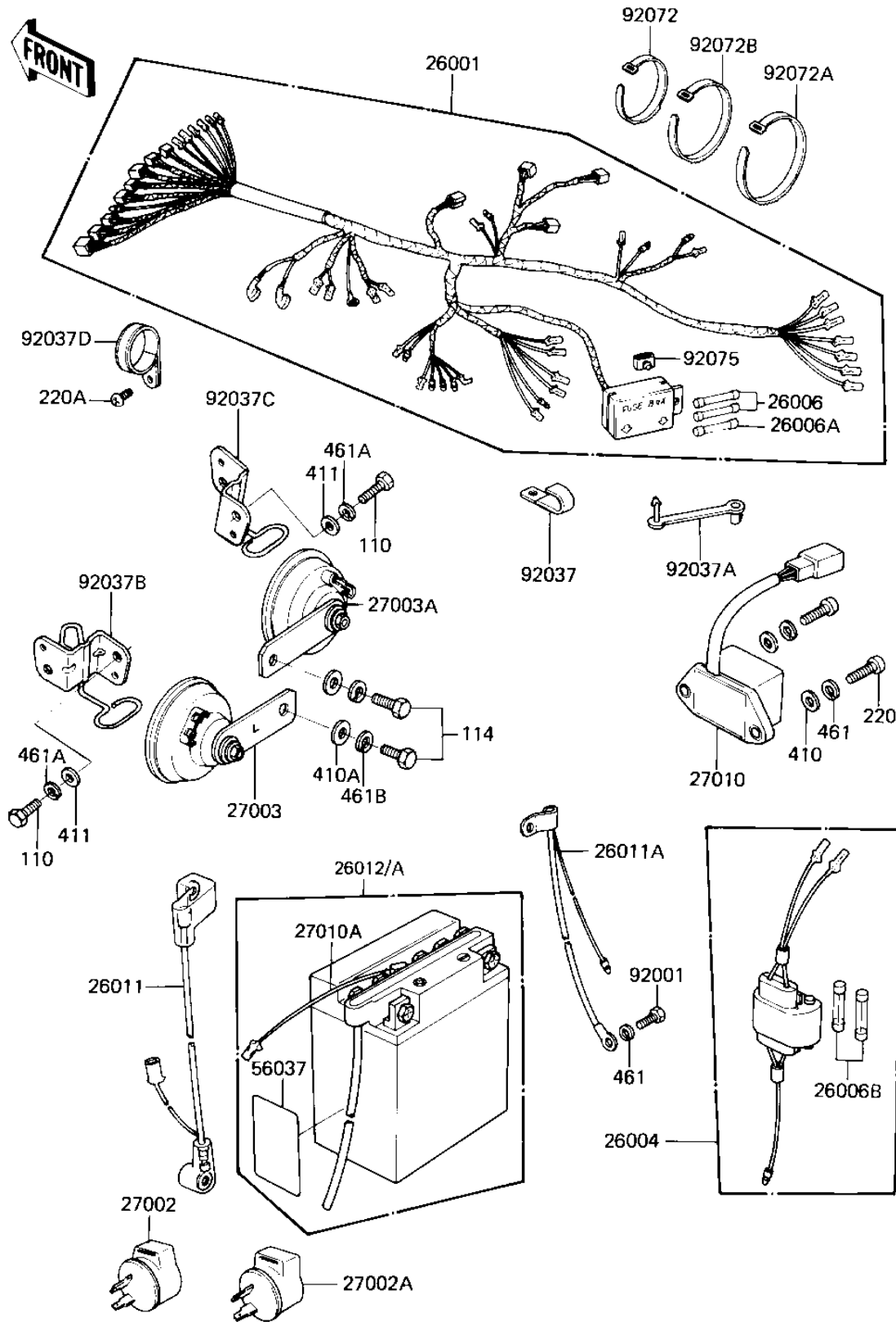


1982 GPz PARTS DIAGRAM

CHASSIS ELECTRICAL EQUIPMENT



1982 GPz PARTS LIST

CHASSIS ELECTRICAL EQUIPMENT

ITEM NAME	PART NUMBER	QUANTITY
HARNESS,MAIN,W/FUSE (Ref # 26001)	26001-1371	1
FUSE-ASSY,ACCESSORY (Ref # 26004)	26004-1014	1
FUSE 10A (Ref # 26006)	26006-003	3
FUSE-20A (Ref # 26006A)	26006-005	2
FUSE,10A,L=30M/M (Ref # 26006B)	26006-1002	3
WIRE-LEAD,BATTERY (Ref # 26011)	26011-1158	1
WIRE-LEAD,BATTERY GRO (Ref # 26011A)	26011-1159	1
FB BAT FB12A-A SENSOR (Ref # 26012)	26012-1050	1
26012-1140 (Canada) (Ref # 26012A)	26012-1051	1
RELAY-TURN SIGNAL (Ref # 27002)	27002-011	1
RELAY,TURN SIGNAL (Ref # 27002A)	27002-016	1
HORN,LH (Ref # 27003)	27003-1057	1
HORN,RH (Ref # 27003A)	27003-1058	1
SWITCH,RESERVE LIGHTI (Ref # 27010)	27010-1069	1
SWITCH,BATTERY,L=200 (Ref # 27010A)	27010-1177	1
LABEL-WARNING,BATTERY (Ref # 56037)	56040-1036	1
BOLT,HEX HEAD,6MM (Ref # 92001)	92001-137	1
CLAMP,WIRING HARNESS (Ref # 92037)	92037-1069	1
CLAMP (Ref # 92037A)	92037-1290	2
CLAMP,HORN LEAD WIRE, (Ref # 92037B)	92037-1322	1
CLAMP,HORN LEAD WIRE, (Ref # 92037C)	92037-1323	1
CLAMP,WIRING HARNESS (Ref # 92037D)	92037-1330	1
BAND,MIDDLE (Ref # 92072)	92072-031	2
BAND,LONG (Ref # 92072A)	92072-032	1
BAND,WIRING HARNESS (Ref # 92072B)	92072-056	2
DAMPER RUBBER,FUSE (Ref # 92075)	92075-279	1
BOLT,5X14,BLACK (Ref # 110)	110C0514A	2
BOLT-SMALL,8X14 (Ref # 114)	114C0814	2
SCREW PAN HEAD 6X20 (Ref # 220)	220B0620	2

1982 GPz PARTS LIST

CHASSIS ELECTRICAL EQUIPMENT

ITEM NAME	PART NUMBER	QUANTITY
SCREW-PAN-CROS (Ref # 220A)	220C0510	1
WASHER PLAIN 6MM (Ref # 410)	410B0600	2
WASHER,PLAIN,8MM (Ref # 410A)	92022-1554	2
WASHER PLAIN 5MM (Ref # 411)	411B0500	2
WASHER SPRING 6MM (Ref # 461)	461F0600	3
WASHER-SPRING,5MM,BLA (Ref # 461A)	461K0500	2
WASHER-SPRING,8MM,BLA (Ref # 461B)	461K0800	2