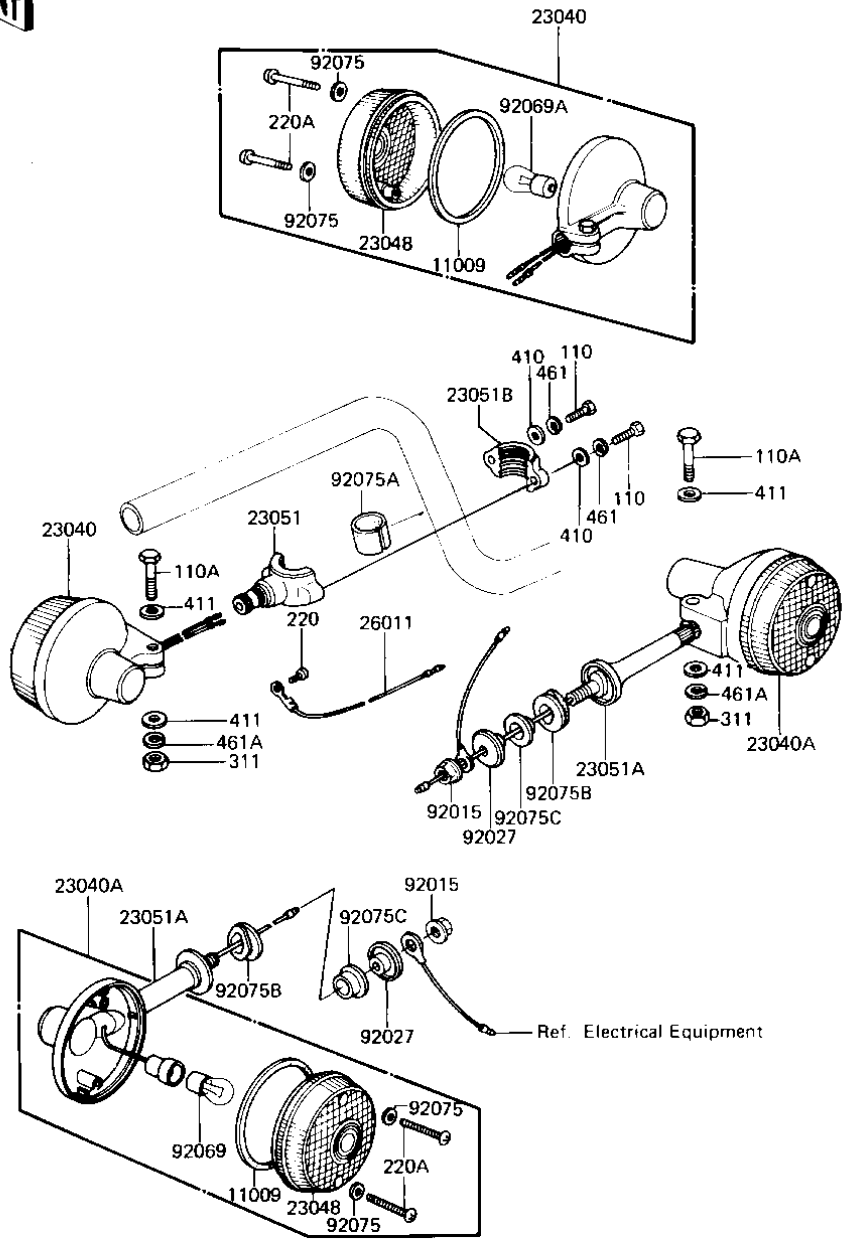


# 1983 Spectre PARTS DIAGRAM

## TURN SIGNALS

F2730-0091



# 1983 Spectre PARTS LIST

## TURN SIGNALS

ITEM NAME	PART NUMBER	QUANTITY
GASKET-SIG LAMP LENS (Ref # 11009)	23050-003	4
LAMP-SIGNAL,FR (Ref # 23040)	23040-1042	2
LAMP-SIGNAL,RR (Ref # 23040A)	23040-1043	2
LENS,TURN SIGNAL LAM (Ref # 23048)	23048-1001	4
BRACKET-SIGNAL LAMP, (Ref # 23051)	23051-1077	2
BRACKET-SIGNAL LAMP, (Ref # 23051A)	23051-1078	2
BRACKET-SIGNAL LAMP, (Ref # 23051B)	23051-1079	2
WIRE-TURN SIGNAL LEA (Ref # 26011)	26011-061	2
NUT,FLANGED,10MM (Ref # 92015)	92015-1428	2
COLLAR (Ref # 92027)	92027-147	2
BULB 12V 32CP (Ref # 92069)	92069-055	2
BULB,12V 23/8W (Ref # 92069A)	92069-060	2
WASHER-PLAIN,4MM (Ref # 92075)	23058-002	8
DAMPER RUBBER (Ref # 92075A)	23066-003	2
DAMPER RUBBER (Ref # 92075B)	92075-128	2
DAMPER RUBBER,SIG LM (Ref # 92075C)	92075-158	2
BOLT,5X16,BLACK (Ref # 110)	110C0516A	4
BOLT,6X30,BLACK (Ref # 110A)	110C0630	4
SCREW PAN HEAD 3X5 (Ref # 220)	220B0305A	2
SCREW-PAN-CROS (Ref # 220A)	220B0420	8
NUT-HEX,6MM,BLACK (Ref # 311)	311C0600	4
WASHER PLAIN (Ref # 410)	410F0500	4
WASHER PLAIN (Ref # 411)	411F0600	8
WASHER-SPRING,5MM,BL (Ref # 461)	461K0500	4
WASHER-SPRING,6MM,BL (Ref # 461A)	461K0600	4