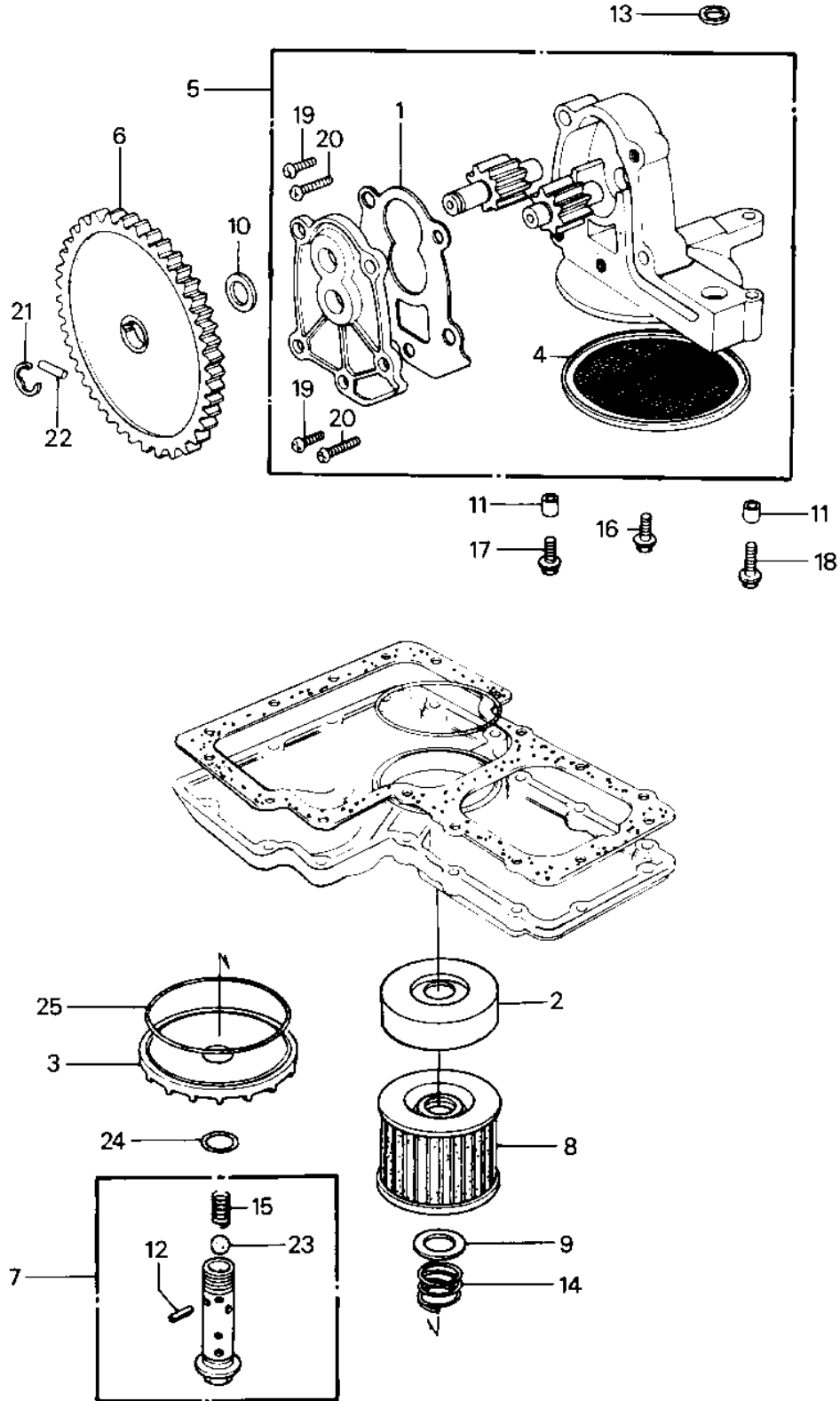


1982 Police 1000 PARTS DIAGRAM

OIL PUMP/OIL FILTER

E1710-0025



1982 Police 1000 PARTS LIST

OIL PUMP/OIL FILTER

| ITEM NAME | PART NUMBER | QUANTITY |
|--------------------------------------|-------------|----------|
| GASKET,OIL PUMP (Ref # 1) | 11009-1029 | 1 |
| PLATE,OIL FILTER (Ref # 2) | 13169-1313 | 1 |
| COVER,OIL FILTER (Ref # 3) | 16101-004 | 1 |
| STRAINER,OIL PUMP (Ref # 4) | 16111-004 | 1 |
| PUMP-ASSY-OIL (Ref # 5) | 16082-5001 | 1 |
| PUMP-ASSY-OIL (Ref # 5) | 16082-1032 | 1 |
| GEAR,OIL PUMP 49T (Ref # 6) | 16085-019 | 1 |
| GEAR,OIL PUMP,49T (Ref # 6) | 16085-1038 | 1 |
| VALVE,OIL FILTER (Ref # 7) | 16126-1108 | 1 |
| VALVE,OIL FILTER (Ref # 7) | 16126-1108 | 1 |
| FILTER,OIL (Ref # 8) | 16099-003 | 1 |
| WASHER,20.5X30X1.0 (Ref # 9) | 92022-1012 | 1 |
| WASHER,LOCK,16MM (Ref # 10) | 92026-080 | 1 |
| PIN,DOWEL,8X10 (Ref # 11) | 92043-1302 | 2 |
| SPRING PIN (Ref # 12) | 92043-111 | 1 |
| O RING,0.D=18MM (Ref # 13) | 92055-048 | 1 |
| SPRING,OIL FILTER (Ref # 14) | 92081-1018 | 1 |
| SPRING (Ref # 15) | 92081-109 | 1 |
| BOLT,FLANGED,6X25 (Ref # 16) | 130G0625 | 1 |
| BOLT,FLANGED,6X35 (Ref # 17) | 130H0635 | 1 |
| BOLT,FLANGED,6X45 (Ref # 18) | 130G0645 | 1 |
| SCREW PAN HEAD 6X18 (Ref # 19) | 220B0618 | 4 |
| SCREW PAN HEAD 6X28 (Ref # 20) | 220B0628 | 2 |
| CIRCLIP,7MM (Ref # 21) | 482K7000 | 1 |
| PIN,DOWEL,3X14 (Ref # 22) | 551A0314 | 1 |
| PIN,GEAR CHANGE DRUM (Ref # 22) | 92042-042 | 1 |
| BALL STEEL 3/8' (Ref # 23) | 600A1200 | 1 |
| "O" RING,16MM (Ref # 24) | 670B2016 | 1 |
| UNAVAILABLE IN PRICE BOOK (Ref # 25) | 671N2590 | 1 |