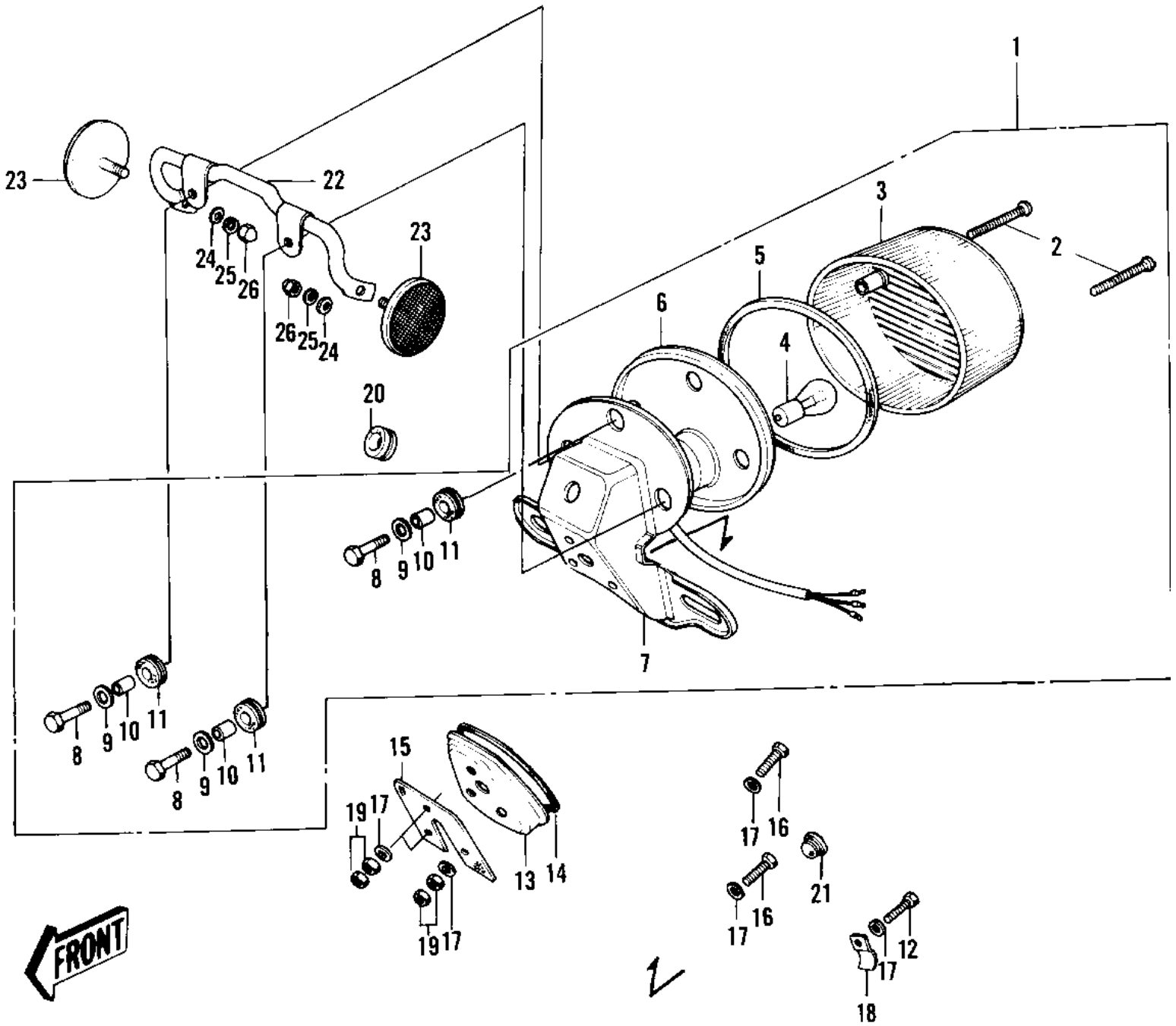


1972 F9 PARTS DIAGRAM

TAILLIGHT (F9-A)



1972 F9 PARTS LIST

TAILLIGHT (F9-A)

ITEM NAME	PART NUMBER	QUANTITY
LAMP ASSY,TAIL,BLACK (Ref # 1)	23024-035-21	1
.SCREW-PAN HEAD,4X35 (Ref # 2)	220E0435A	2
.LENS-TAIL LAMP (Ref # 3)	23026-023	1
.BULB,6V 17/5.3W (Ref # 4)	92069-028	1
.GASKET-TAIL LAMP LEN (Ref # 5)	23028-018	1
.CASE,TAIL LAMP (Ref # 6)	23027-030	1
CASE,TAIL LAMP (Ref # 6)	23027-030	AL
.BKT-LICENSE PLT.BLAC (Ref # 7)	23036-019-21	1
.BOLT 6X22 (Ref # 8)	112B0622	3
.WASHER 6.5X20X1.6T (Ref # 9)	92022-125	3
.COLLAR,6.8X10X8.5 (Ref # 10)	92027-129	3
.DAMPER RUBBER (Ref # 11)	92075-076	3
BOLT,EXCLUSIVE (Ref # 12)	92001-1456	1
STAY,TAIL LAMP (Ref # 13)	35031-006	1
DAMPER RUBBER,TAIL (Ref # 14)	35016-006	1
DAMPER-TAIL LAMP SHC (Ref # 15)	35039-005	1
BOLT-UPSET,6X40 (Ref # 16)	112G0640	2
WASHER 6.5X20X1.6T (Ref # 17)	92022-125	6
CLIP WIRING HARNESS (Ref # 18)	35024-002	1
NUT 6MM (Ref # 19)	312B0600	6
GROMMET HARNESS 10MM (Ref # 20)	92071-019	1
PLUG,RUBBER (Ref # 21)	92074-025	1
BRACKET-REFLECTOR (Ref # 22)	28013-005	1
REFLECTOR-REFLEX,REA (Ref # 23)	28012-008	2
WASHER PLAIN 5MM (Ref # 24)	411B0500	2
WASHER SPRING 5MM (Ref # 25)	461F0500	2
NUT-CAP,5MM (Ref # 26)	322N0500	2