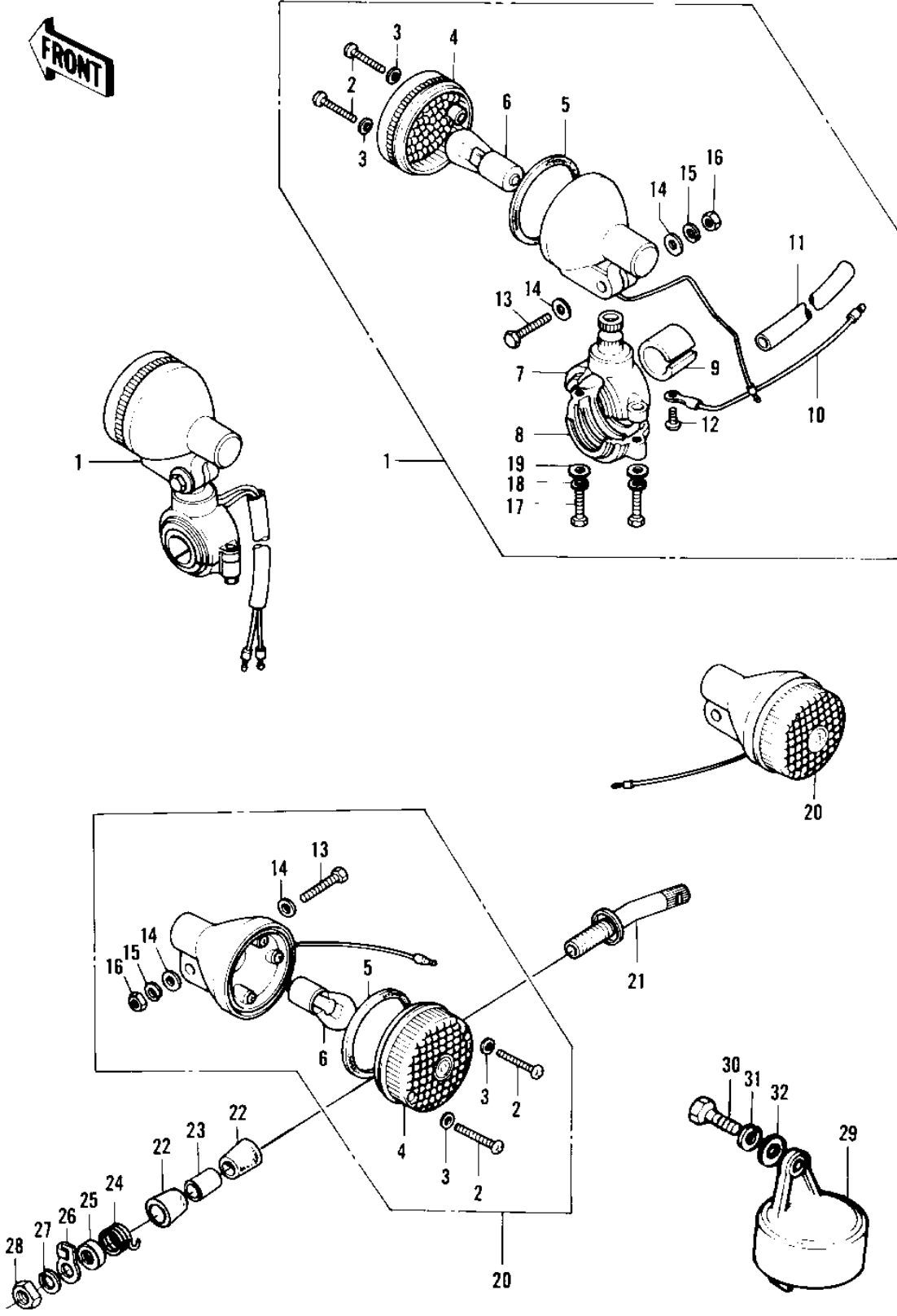


# 1975 F9-C PARTS DIAGRAM

TURN SIGNALS ('74-'75 F9-B/F9-C 350)



# 1975 F9-C PARTS LIST

TURN SIGNALS ('74-'75 F9-B/F9-C 350)

| ITEM NAME                       | PART NUMBER | QUANTITY |
|---------------------------------|-------------|----------|
| LAMP ASY-FR TURN SIG (Ref # 1)  | 23037-005   |          |
| SCREW-PAN HEAD,4X20 (Ref # 2)   | 220E0420A   |          |
| WASHER-PLAIN,4MM (Ref # 3)      | 23058-002   |          |
| LENS,TURN SIGNAL LAM (Ref # 4)  | 23048-1001  |          |
| LENS,TURN SIGNAL LAM (Ref # 4)  | 23048-1001  |          |
| GASKET-SIG LAMP LENS (Ref # 5)  | 23050-003   |          |
| BULB, 6V 21CP (Ref # 6)         | 92069-056   |          |
| BRACKET,SIGNAL LAMP (Ref # 7)   | 23051-1013  |          |
| BRACKET,SIGNAL LAMP (Ref # 7)   | 23051-1013  |          |
| BRACKET,FRNT TURN SI (Ref # 8)  | 23051-1004  |          |
| BRACKET,FRNT TURN SI (Ref # 8)  | 23051-1004  |          |
| DAMPER RUBBER (Ref # 9)         | 23066-003   |          |
| WIRE TURN SIGNAL LEA (Ref # 10) | 26011-081   |          |
| COVER-WIRING HARNESS (Ref # 11) | 26009-004   |          |
| SCREW PAN HEAD 3X5 (Ref # 12)   | 220B0305A   |          |
| BOLT-UPSET (Ref # 13)           | 112G0630    |          |
| BOLT-UPSET (Ref # 13)           | 112G0630    |          |
| WASHER PLAIN 6MM (Ref # 14)     | 410B0600    |          |
| WASHER SPRING 6MM (Ref # 15)    | 461F0600    |          |
| NUT 6MM (Ref # 16)              | 311B0600    |          |
| BOLT (Ref # 17)                 | 110N0516    |          |
| WASHER SPRING 5MM (Ref # 18)    | 461F0500    |          |
| WASHER-PLAIN,5MM (Ref # 19)     | 410D0500    |          |
| LAMP-REAR TURN SIGNA (Ref # 20) | 23040-033   |          |
| BKT-RR SIGNAL LAMP (Ref # 21)   | 23051-037   |          |
| DAMPER RUBBER (Ref # 22)        | 92075-148   |          |
| COLLAR 12.7X17.3X30 (Ref # 23)  | 92027-168   |          |
| SPRING (Ref # 24)               | 92081-111   |          |
| WASHER CUP 12.5X35X4 (Ref # 25) | 92022-235   |          |

## 1975 F9-C PARTS LIST

TURN SIGNALS ('74-'75 F9-B/F9-C 350)

| ITEM NAME                       | PART NUMBER | QUANTITY |
|---------------------------------|-------------|----------|
| CLAMP-RR SIGNAL LAMP (Ref # 26) | 92037-087   |          |
| WASHER,SPRING,12MM (Ref # 27)   | 461F1200    |          |
| NUT-HEX-FINE,12MM (Ref # 28)    | 315B1200    |          |
| RELAY-TURN SIGNAL (Ref # 29)    | 27002-015   |          |
| SCREW PAN HEAD 6X16 (Ref # 30)  | 220B0616    |          |
| WASHER SPRING 6MM (Ref # 31)    | 461F0600    |          |
| WASHER PLAIN 6MM (Ref # 32)     | 410B0600    |          |