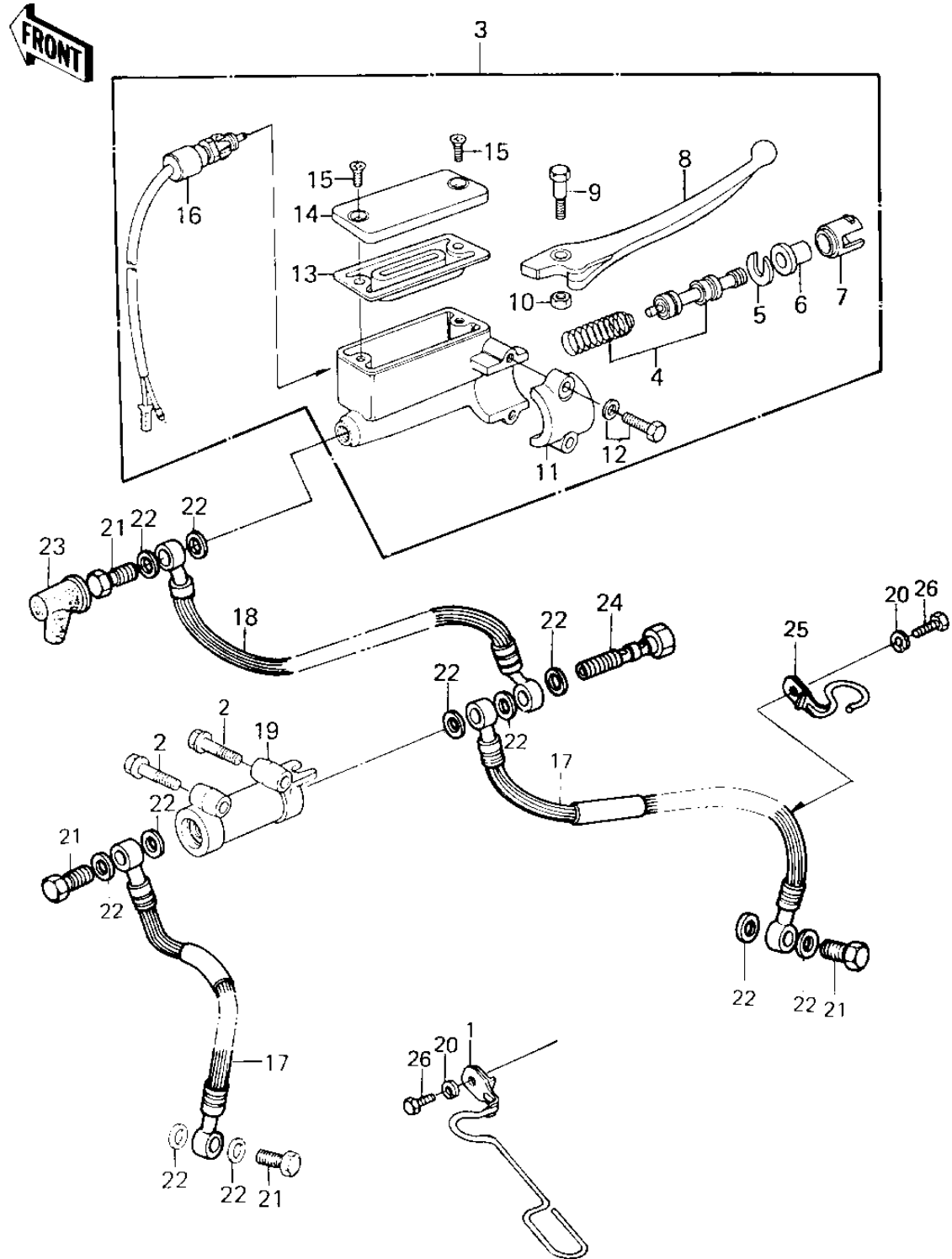


1980 LTD PARTS DIAGRAM

FRONT MASTER CYLINDER ('80 H1)



1980 LTD PARTS LIST

FRONT MASTER CYLINDER ('80 H1)

ITEM NAME	PART NUMBER	QUANTITY
CLAMP,CABLE (Ref # 1)	92037-1116	1
BOLT,FLANGED,6X40 (Ref # 2)	130G0640	2
CYLINDER ASSY,FR (Ref # 3)	43015-1046	1
PISTON-COMP-BRAKE (Ref # 4)	43020-1023	1
STOPER,PISTON (Ref # 5)	43022-1001	1
DUST COVER (Ref # 6)	49016-1010	1
LINER,PISTON (Ref # 7)	14008-1007	1
LEVER,FRONT BRAKE (Ref # 8)	46092-1012	1
BOLT,CLUTCH LEV FITT (Ref # 9)	92001-1056	1
NUT 6MM (Ref # 10)	312B0600	1
HOLDER,MASTER CYLINDR (Ref # 11)	43034-1001	1
BOLT,HEX HEAD,6X25 (Ref # 12)	43033-003	2
DIAPHRAGM (Ref # 13)	43028-1008	1
CAP,OIL CUP (Ref # 14)	43026-1006	1
SCREW,COUNTERSUNK HED (Ref # 15)	92001-1055	2
SWITCH,BRAKE (Ref # 16)	27010-1028	1
HOSE,FR CALIPER,L=610 (Ref # 17)	43059-1098	2
HOSE,BRAKE,L=520M/M (Ref # 18)	43059-1063	1
JOINT,FR BRAKE HOSE (Ref # 19)	43061-1002	1
WASHER SPRING 6MM (Ref # 20)	461F0600	2
BOLT,OIL,L=23 (Ref # 21)	92002-1888	4
WASHER-OIL BOLT (Ref # 22)	43067-001	11
BOOT,DUST (Ref # 23)	49006-1041	1
BOLT (Ref # 24)	92002-1909	1
CLAMP,FRNT BRK HOSE (Ref # 25)	92037-1054	1
BOLT-UPSET,6X12 (Ref # 26)	112G0612	2