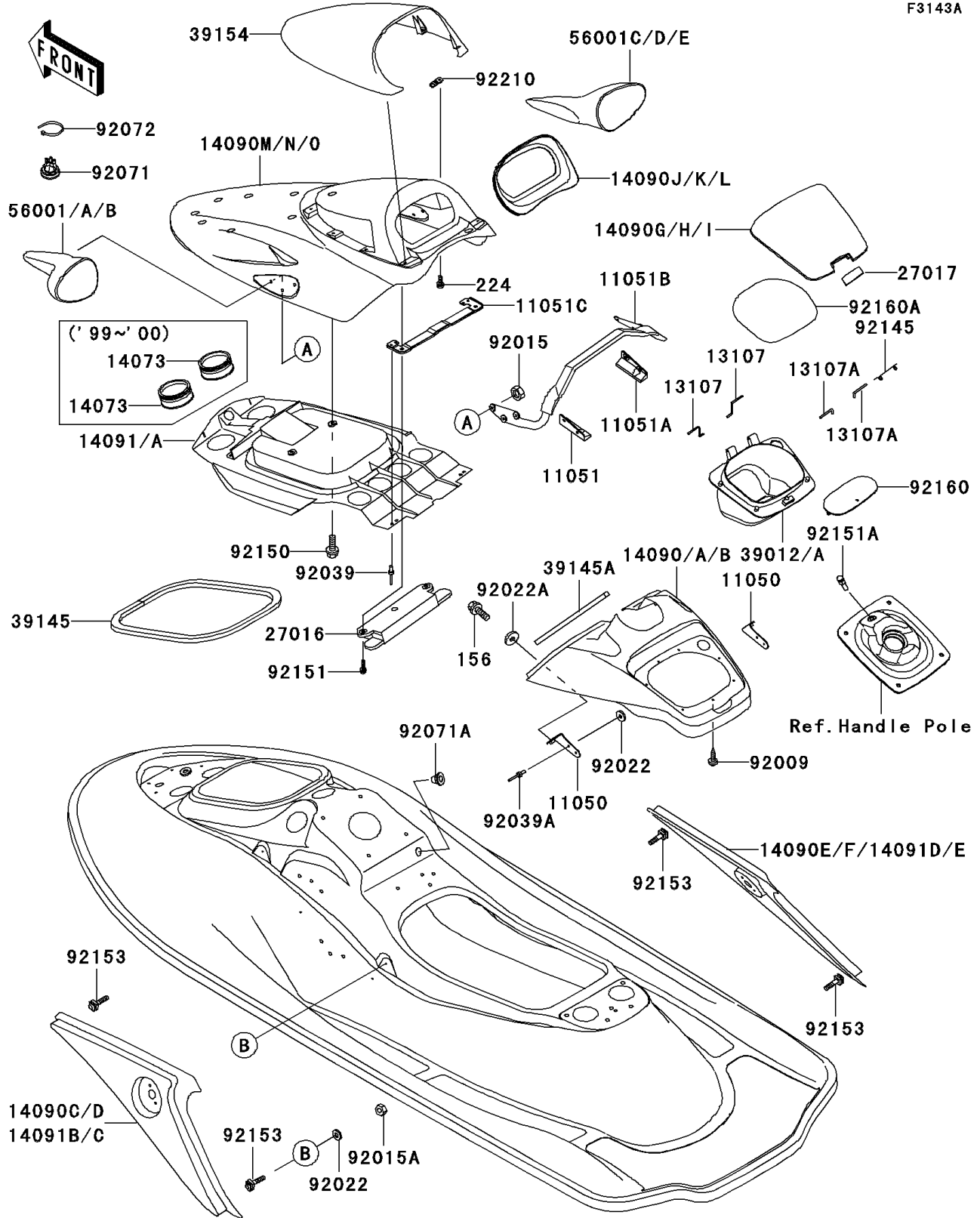


# 2001 Ultra 150 PARTS DIAGRAM

Hull Cover

F3143A



## 2001 Ultra 150 PARTS LIST

### Hull Cover

ITEM NAME	PART NUMBER	QUANTITY
BRACKET (Ref # 11050)	11050-3746	2
BRACKET,LH (Ref # 11051)	11051-3745	1
BRACKET,RH (Ref # 11051A)	11051-3746	1
BRACKET (Ref # 11051B)	11051-3753	1
BRACKET (Ref # 11051C)	11051-3759	1
SHAFT (Ref # 13107)	13107-3761	2
SHAFT (Ref # 13107A)	13107-3769	2
COVER,HANDLE,G.SILVER (Ref # 14090)	14090-3809-F2	1
COVER,CENTER STORAGE,G.SILVER (Ref # 14090G)	14090-3812-F2	1
COVER,METER,G.SILVER (Ref # 14090J)	14090-3820-F2	1
COVER,HATCH,G.SILVER (Ref # 14090M)	14090-3823-F2	1
COVER,DUCT (Ref # 14091A)	14091-3730	1
COVER,SIDE,LH,G.SILVER (Ref # 14091B)	14091-3731-F2	1
COVER,SIDE,RH,G.SILVER (Ref # 14091D)	14091-3732-F2	1
LOCK-ASSY,LID (Ref # 27016)	27016-3753	1
LOCK,CENTER STORAGE,F.BLACK (Ref # 27017)	27017-3720-6Z	1
CASE-STORAGE (Ref # 39012A)	39012-3728	1
TRIM-SEAL (Ref # 39145)	39145-3756	1
TRIM-SEAL,L=340 (Ref # 39145A)	39145-3764	2
BOLT-WP,6X18 (Ref # 156)	156R0618	2
SCREW-PAN-WP-CROS,5X14 (Ref # 224)	224R0514	8
WINDSHIELD (Ref # 39154)	39154-3707	1
MIRROR-ASSY,LH,G.SILVER (Ref # 56001)	56001-3713-F2	1
MIRROR-ASSY,RH,G.SILVER (Ref # 56001C)	56001-3714-F2	1
SCREW,TAPPING,5X20 (Ref # 92009)	92009-3716	7
NUT,LOCK,6MM (Ref # 92015)	92015-3766	6
NUT,LOCK,5MM (Ref # 92015A)	92015-3798	4
WASHER,5X16X1.5 (Ref # 92022)	92022-3041	8
WASHER,6.5X20X1.5 (Ref # 92022A)	92022-3710	2

## 2001 Ultra 150 PARTS LIST

### Hull Cover

ITEM NAME	PART NUMBER	QUANTITY
RIVET (Ref # 92039)	92039-3747	4
RIVET (Ref # 92039A)	92039-3775	4
GROMMET (Ref # 92071)	92071-3819	1
GROMMET (Ref # 92071A)	92071-3826	1
BAND,L=292.1 (Ref # 92072)	92072-3509	1
SPRING (Ref # 92145)	92145-3711	1
BOLT,6X18 (Ref # 92150)	92150-3729	4
BOLT,6X22 (Ref # 92151)	92151-3769	2
BOLT (Ref # 92151A)	92151-3776	1
BOLT,5MM (Ref # 92153)	92153-3703	4
DAMPER (Ref # 92160)	92160-3926	1
DAMPER (Ref # 92160A)	92160-3933	1
NUT (Ref # 92210)	92210-3750	8