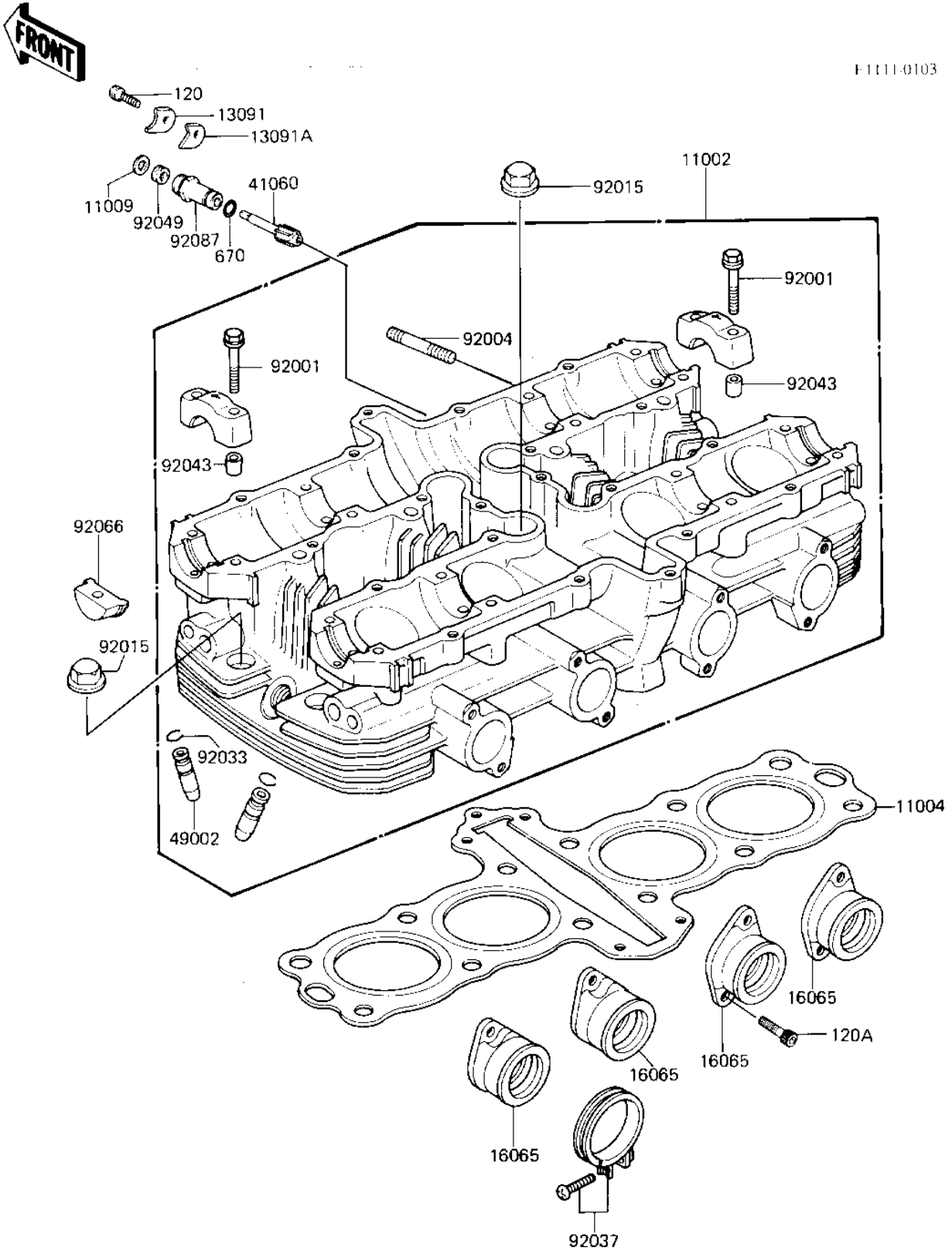


1983 KZ550-A4 PARTS DIAGRAM

CYLINDER HEAD (KZ550-A4)



1983 KZ550-A4 PARTS LIST

CYLINDER HEAD (KZ550-A4)

| ITEM NAME | PART NUMBER | QUANTITY |
|-------------------------------------|-------------|----------|
| HEAD-ASSY-CYLINDER,F. (Ref # 11002) | 11002-1122 | 1 |
| GASKET-HEAD (Ref # 11004) | 11004-1212 | 1 |
| GASKET,TACHOMETER GER (Ref # 11009) | 92065-103 | 1 |
| HOLDER,TACHOMETER2.3T (Ref # 13091) | 13091-1008 | 1 |
| HOLDER-CARBURETOR (Ref # 16065) | 16065-1051 | 4 |
| GEAR,TACHOMETER,10T (Ref # 41060) | 13223-011 | 1 |
| GUIDE,VALVE (Ref # 49002) | 49002-1005 | 8 |
| BOLT,FLANGED,6X38 (Ref # 92001) | 92001-1105 | 16 |
| STUD,6X27 (Ref # 92007) | 92004-066 | 8 |
| NUT,CAP,8MM,BLACK (Ref # 92015) | 92015-1174 | 12 |
| CLAMP (Ref # 92037) | 92037-1326 | 4 |
| PIN-DOWEL (Ref # 92043) | 92042-007 | 16 |
| OIL SEAL (Ref # 92049) | 92050-075 | 1 |
| PLUG,CAMSHAFT,11.35X1 (Ref # 92066) | 92066-1111 | 4 |
| GUIDE,TACHOMETER GEAR (Ref # 92087) | 92087-010 | 1 |
| BOLT,6X14 (Ref # 120) | 120P0614 | 1 |
| BOLT-SOCKET,6X16,BLAC (Ref # 120A) | 120S0616 | 8 |
| "O" RING,10MM (Ref # 670) | 670D1510 | 1 |