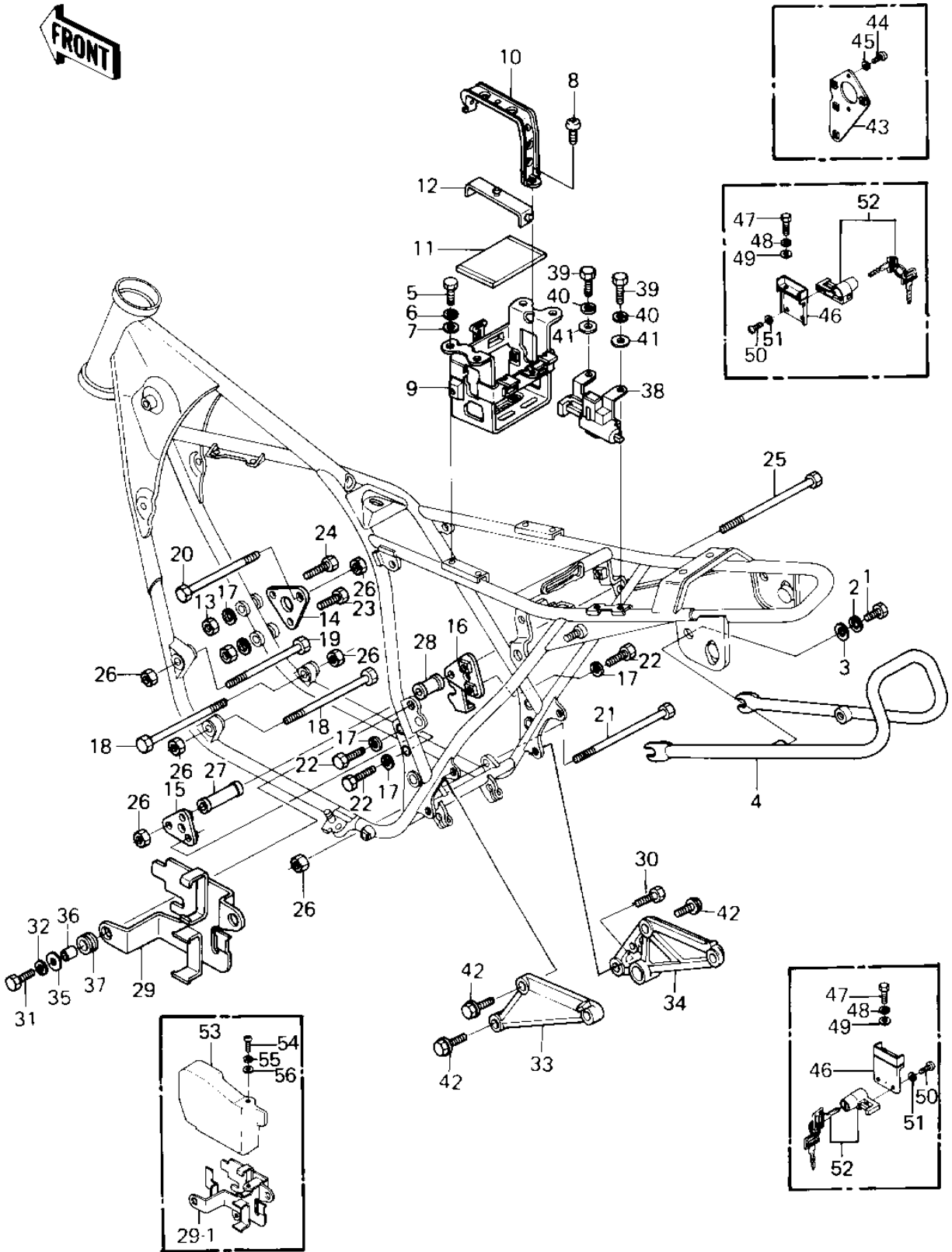


# 1981 LTD PARTS DIAGRAM

FRAME FITTINGS/BATTERY CASE ('80-'81 C1/



# 1981 LTD PARTS LIST

FRAME FITTINGS/BATTERY CASE ('80-'81 C1/

ITEM NAME	PART NUMBER	QUANTITY
BOLT-SMALL-UPSET,8X18 (Ref # 1)	115G0818	2
WASHER SPRING 8MM (Ref # 2)	461F0800	2
WASHER PLAIN 8MM (Ref # 3)	410B0800	2
STAY,REAR (Ref # 4)	35011-1050	1
BOLT-UPSET,6X12 (Ref # 5)	112G0612	4
WASHER SPRING 6MM (Ref # 6)	461F0600	4
WASHER PLAIN 6MM (Ref # 7)	411B0600	4
SCREW PAN HEAD 6X12 (Ref # 8)	220B0612	1
CASE,BATTERY (Ref # 9)	32097-1027	1
BAND,BATTERY (Ref # 10)	92072-1019	1
DAMPER,BATTERY BASE (Ref # 11)	92075-1076	1
DAMPER,BATTERY BAND (Ref # 12)	92075-1113	1
NUT,8M/M (Ref # 13)	317B0800	2
BRACKET,ENGINE (Ref # 14)	32029-1048	1
BRACKET,ENGINE (Ref # 15)	32029-1049	1
BRACKET,ENGINE (Ref # 16)	32029-1050	1
WASHER SPRING 8MM (Ref # 17)	461F0800	6
BOLT,HEX HEAD,10X84 (Ref # 18)	92001-1048	2
BOLT,HEX HEAD,10X72 (Ref # 19)	92001-1049	1
BOLT,FLANGED,10X60 (Ref # 20)	92001-1599	1
BOLT,FLANGED,10X180 (Ref # 21)	92001-1606	1
BOLT (Ref # 22)	92001-1578	4
BOLT (Ref # 22)	92001-1578	4
BOLT,HEX HEAD,8X59 (Ref # 23)	110G0859	1
BOLT,FLANGED,8X60 (Ref # 23)	92001-1581	1
BOLT-8X63 (Ref # 24)	92001-1397	1
BOLT-8X63 (Ref # 24)	92001-1397	1
BOLT,FLANGED,10X255 (Ref # 25)	92001-1609	1
NUT,LOCK,10MM (Ref # 26)	92019-021	6

# 1981 LTD PARTS LIST

FRAME FITTINGS/BATTERY CASE ('80-'81 C1/

ITEM NAME	PART NUMBER	QUANTITY
COLLAR,L=57.5M/M (Ref # 27)	92027-1109	1
COLLAR,L=37M/M (Ref # 28)	92027-1110	1
BRACKET,ELECTRO BASE (Ref # 29)	11034-1781	1
BRACKET,ELECTRO BASE (Ref # 29-1)	11034-1975	1
BOLT-HEX HEAD 8X30 (Ref # 30)	114G0830	1
BOLT-UPSET,6X20 (Ref # 31)	112G0620	2
WASHER SPRING 6MM (Ref # 32)	461F0600	2
STAY,L.H,MUFFLER (Ref # 33)	35011-1051	1
STAY,R.H,MUFFLER (Ref # 34)	35011-1052	1
WASHER 6.5X20X1.6T (Ref # 35)	92022-125	2
COLLAR (Ref # 36)	92027-165	2
DAMPER RUBBER (Ref # 37)	92075-149	2
HOOK ASSY,HELMET (Ref # 38)	53045-1001	1
BOLT-UPSET,6X12 (Ref # 39)	112G0612	2
WASHER SPRING 6MM (Ref # 40)	461F0600	2
WASHER PLAIN 6MM (Ref # 41)	411B0600	2
BOLT,8X28 (Ref # 42)	92001-1095	3
BRACKET,CDI UNIT (Ref # 43)	11034-1985	1
SCREW PAN HEAD 6X12 (Ref # 44)	220B0612	2
WASHER SPRING 6MM (Ref # 45)	461F0600	2
BRACKET,HELMET LOCK (Ref # 46)	11034-1926	2
BOLT-UPSET 6X14 (Ref # 47)	112B0614	4
WASHER SPRING 6MM (Ref # 48)	461F0600	4
WASHER PLAIN 6MM (Ref # 49)	411B0600	4
SCREW PAN HEAD 5X10 (Ref # 50)	220B0510	4
WASHER SPRING 5MM (Ref # 51)	461F0500	4
LOCK ASSY,HELMET (Ref # 52)	27016-5038	2
COVER,ELECTRO (Ref # 53)	14025-1295	1
SCREW PAN HEAD 6X14 (Ref # 54)	220B0614	2