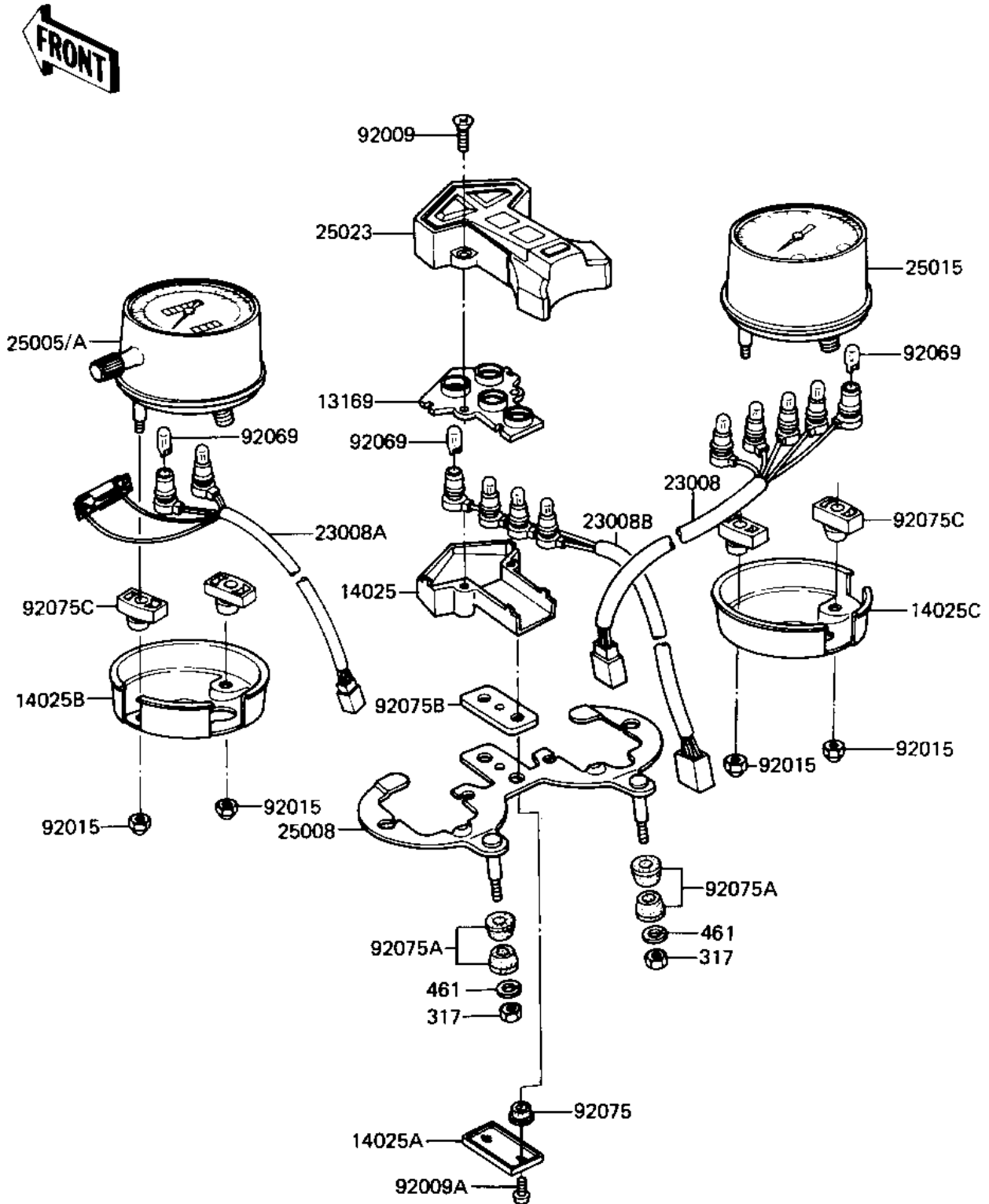


1983 LTD PARTS DIAGRAM

METERS ('82-'83 C3/C4)

F2530-0072



1983 LTD PARTS LIST

METERS ('82-'83 C3/C4)

ITEM NAME	PART NUMBER	QUANTITY
PLATE,SOCKET (Ref # 13169)	13169-1120	1
COVER,PILOT BOX,LOWER (Ref # 14025)	14025-1067	1
COVER,PILOT BOX DAMPR (Ref # 14025A)	14025-1070	1
COVER,SPEEDOMETER (Ref # 14025B)	14025-1218	1
COVER,TACHOMETER (Ref # 14025C)	14025-1219	1
SOCKET-ASSY,TACHOMETE (Ref # 23008)	23008-1101	1
SOCKET-ASSY,SPEEDOMET (Ref # 23008A)	23008-1122	1
SOCKET-ASSY,PILOT BOX (Ref # 23008B)	23008-1123	1
SPEEDOMETER,MPH (Ref # 25005)	25005-1151	1
BRACKET,METER (Ref # 25008)	25008-1011	1
TACHOMETER,(X1000RPM) (Ref # 25015)	25015-1102	1
COVER,PILOT BOX,UPPER (Ref # 25023)	25023-1007	1
SCREW,4X10 (Ref # 92009)	92009-1039	2
SCREW,TAPPING,4X10 (Ref # 92009A)	92009-1040	2
NUT-CAP,5MM (Ref # 92015)	322N0500	4
BULB,12V3.4W (Ref # 92069)	92069-1007	11
DAMPER RUBBER,MET FIT (Ref # 92075)	25019-023	2
DAMPER RUBBER (Ref # 92075A)	92075-080	4
SHOCK DAMPER,PILOT (Ref # 92075B)	92075-1100	1
SHOCK DAMPER,METER (Ref # 92075C)	92075-1101	4
NUT,8M/M (Ref # 317)	317B0800	2
WASHER SPRING 8MM (Ref # 461)	461F0800	2