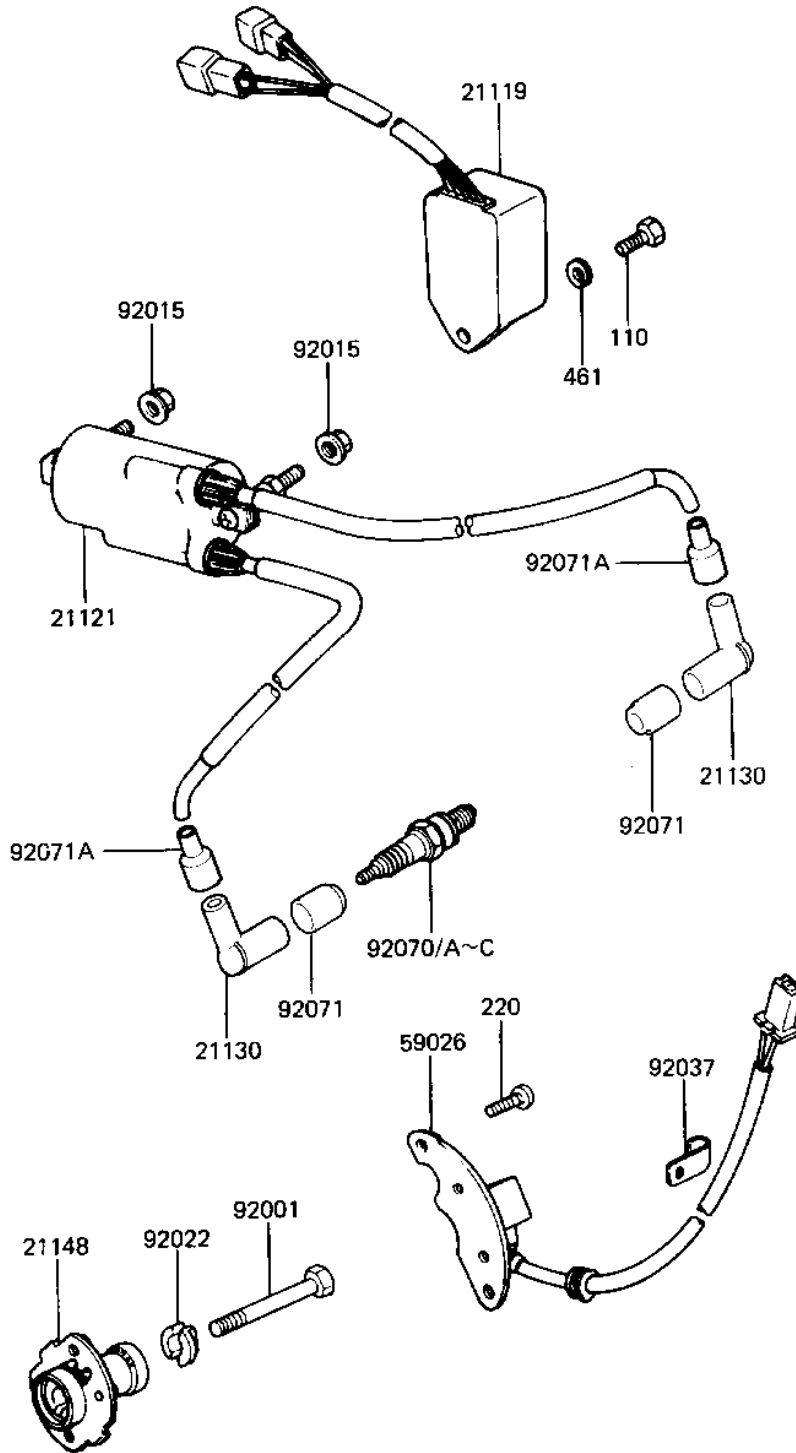


1982 LTD Belt PARTS DIAGRAM

IGNITION ('81-'83 D2/D3/D4/D5)

E1830-0018



1
 2
 3
 4
 5
 6
 7
 8
 9
 10
 11
 12
 13
 14
 15
 16
 17
 18
 19
 20
 21
 22
 23
 24
 25
 26
 27
 28
 29
 30
 31
 32
 33
 34
 35
 36
 37
 38
 39
 40
 41
 42
 43
 44
 45
 46
 47
 48
 49
 50
 51
 52
 53
 54
 55
 56
 57
 58
 59
 60
 61
 62
 63
 64
 65
 66
 67
 68
 69
 70
 71
 72
 73
 74
 75
 76
 77
 78
 79
 80
 81
 82
 83
 84
 85
 86
 87
 88
 89
 90
 91
 92
 93
 94
 95
 96
 97
 98
 99
 100

1982 LTD Belt PARTS LIST

IGNITION ('81-'83 D2/D3/D4/D5)

ITEM NAME	PART NUMBER	QUANTITY
IGNITER (Ref # 21119)	21119-1022	1
COIL-IGNITION (Ref # 21121)	21121-1041	1
CAP-SPARK PLUG,RTFM20 (Ref # 21130)	21130-1007	2
GOVERNOR-BREAKER (Ref # 21148)	21148-1021	1
COIL-PULSING (Ref # 59026)	59026-1010	1
BOLT-8X63 (Ref # 92001)	92001-1397	1
NUT-6MM (Ref # 92015)	92015-1078	2
WASHER,SPARK ADVANCER (Ref # 92022)	92022-244	1
CLAMP,WIRING HARNESS (Ref # 92037)	21126-008	1
SPARK PLUG B7ES (Ref # 92070)	B7ES	2
SPARK PLUG BR7ES (Canada) (Ref # 92070B)	92070-1035	2
GROMMET-PLUG CAP,A (Ref # 92071)	21131-004	2
GROMMET,SPARK PLG CAP (Ref # 92071A)	21132-005	2
BOLT-UPSET,6X16 (Ref # 110)	112G0616	1
SCREW PAN HEAD 5X12 (Ref # 220)	220B0512	2
WASHER SPRING 6MM (Ref # 461)	461F0600	1