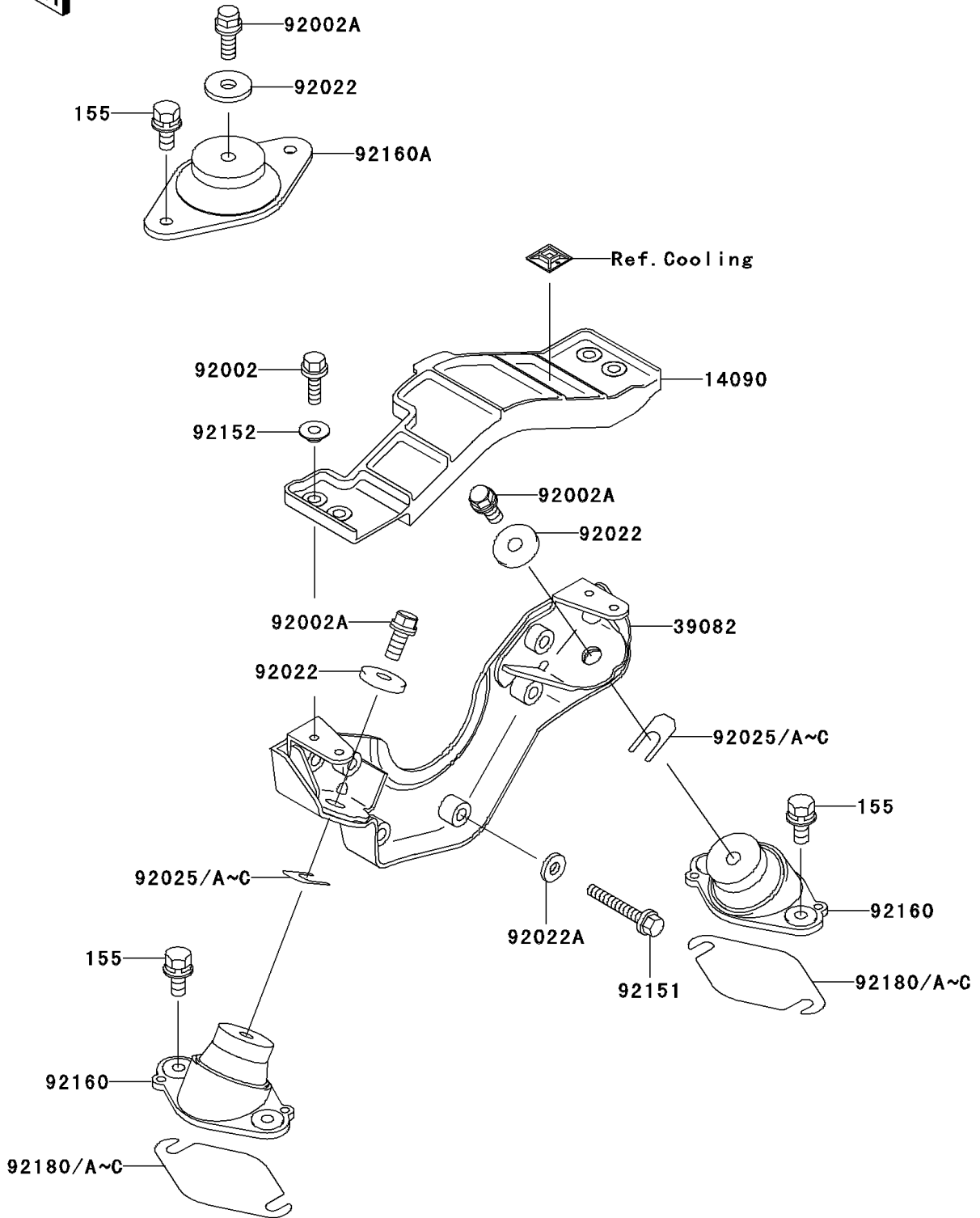


2004 Ultra 150 PARTS DIAGRAM

Engine Mount

F3144



2004 Ultra 150 PARTS LIST

Engine Mount

| ITEM NAME | PART NUMBER | QUANTITY |
|-----------------------------------|-------------|----------|
| BOLT-WSP-SMALL,8X30 (Ref # 155) | 155R0830 | 6 |
| COVER (Ref # 14090) | 14090-3815 | 1 |
| MOUNT-ENGINE (Ref # 39082) | 39082-3720 | 1 |
| BOLT,6X16 (Ref # 92002) | 92002-3728 | 4 |
| BOLT,10X25 (Ref # 92002A) | 92002-3770 | 3 |
| WASHER,32X10.5X4 (Ref # 92022) | 92022-3023 | 3 |
| WASHER,8.2X18X1.5 (Ref # 92022A) | 92022-3743 | 6 |
| SHIM,T=0.3MM (Ref # 92025) | 92025-3705 | AR |
| SHIM,T=0.5MM (Ref # 92025A) | 92025-3706 | AR |
| SHIM,T=1.0MM (Ref # 92025B) | 92025-3707 | AR |
| SHIM,T=1.5MM (Ref # 92025C) | 92025-3708 | AR |
| BOLT,8X35 (Ref # 92151) | 92151-3763 | 6 |
| COLLAR (Ref # 92152) | 92152-3712 | 4 |
| DAMPER,ENGINE MOUNT (Ref # 92160) | 92160-3838 | 2 |
| DAMPER (Ref # 92160A) | 92160-3903 | 1 |
| SHIM,T=0.30 (Ref # 92180) | 92180-3708 | AR |
| SHIM,T=0.50 (Ref # 92180A) | 92180-3709 | AR |
| SHIM,T=1.00 (Ref # 92180B) | 92180-3710 | AR |
| SHIM,T=1.50 (Ref # 92180C) | 92180-3711 | AR |