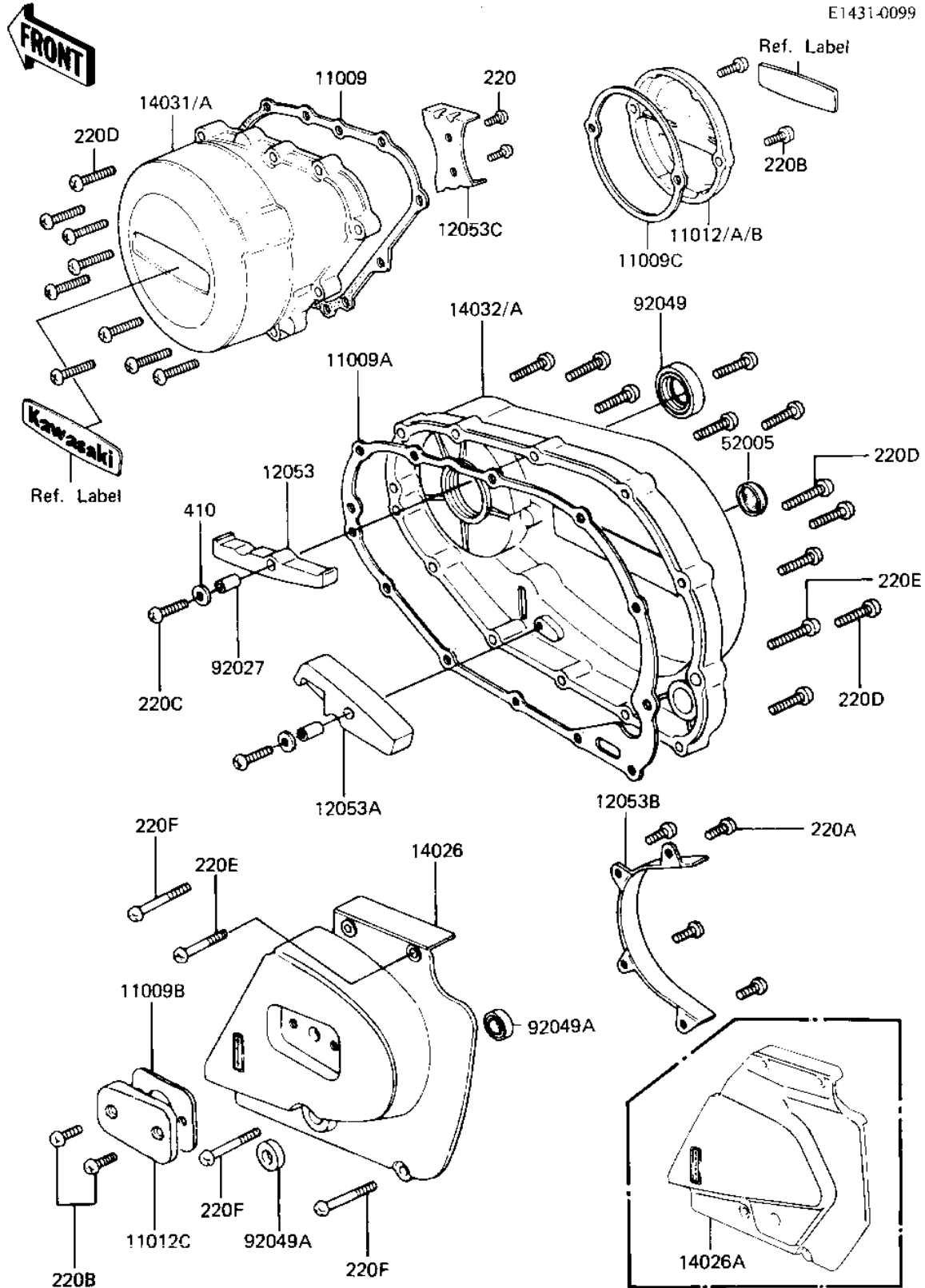


1981 LTD PARTS DIAGRAM

ENGINE COVERS ('81-'83 A2/A3/A4)

E1431-0099



1981 LTD PARTS LIST

ENGINE COVERS ('81-'83 A2/A3/A4)

ITEM NAME	PART NUMBER	QUANTITY
GASKET,GENERATER COV. (Ref # 11009)	11009-1032	1
GASKET,CLUTCH COVER (Ref # 11009A)	11009-1033	1
GASKET,CLUTCH ADJ CAP (Ref # 11009B)	14049-004	1
GASKET,BREAKER COVER (Ref # 11009C)	14050-010	1
COVERBRK POINT,BUFF (Ref # 11012B)	14027-019-80	1
COVER,CLUTCH ADJUSTNG (Ref # 11012C)	14028-006-80	1
GUIDE,PRIMARY CHAIN (Ref # 12053)	12053-1004	1
GUIDE,PRIMARY CHAIN (Ref # 12053A)	12053-1005	1
GUIDE,CHAIN (Ref # 12053B)	12053-1009	1
GUIDE,CHAIN (Ref # 12053C)	12053-1014	1
COVER CHAIN (Ref # 14026)	14026-1011-80	1
COVER,GENERATOR,BUFF (Ref # 14031)	14031-1023	1
COVER,CLUTCH (Ref # 14032)	14032-1038	1
GAUGE,OIL LEVEL (Ref # 52005)	52005-1009	1
COLLAR,8X15 (Ref # 92027)	92027-1079	2
OIL SEAL,R.H CRNKSFT (Ref # 92049)	92050-065	1
OIL SEAL,TB13225.5 (Ref # 92049A)	92051-005	2
SCREW PAN HEAD 5X8 (Ref # 220)	220B0508	2
SCREW PAN HEAD 6X10 (Ref # 220A)	220B0610	4
SCREW PAN HEAD 6X18 (Ref # 220B)	220B0618	4
SCREW PAN HEAD 6X25 (Ref # 220C)	220B0625	2
SCREW PAN HEAD 6X30 (Ref # 220D)	220B0630	19
SCREW PAN HEAD 6X40 (Ref # 220E)	220B0640	3
SCREW PAN HEAD 6X50 (Ref # 220F)	220B0650	3
WASHER PLAIN 6MM (Ref # 410)	410B0600	2