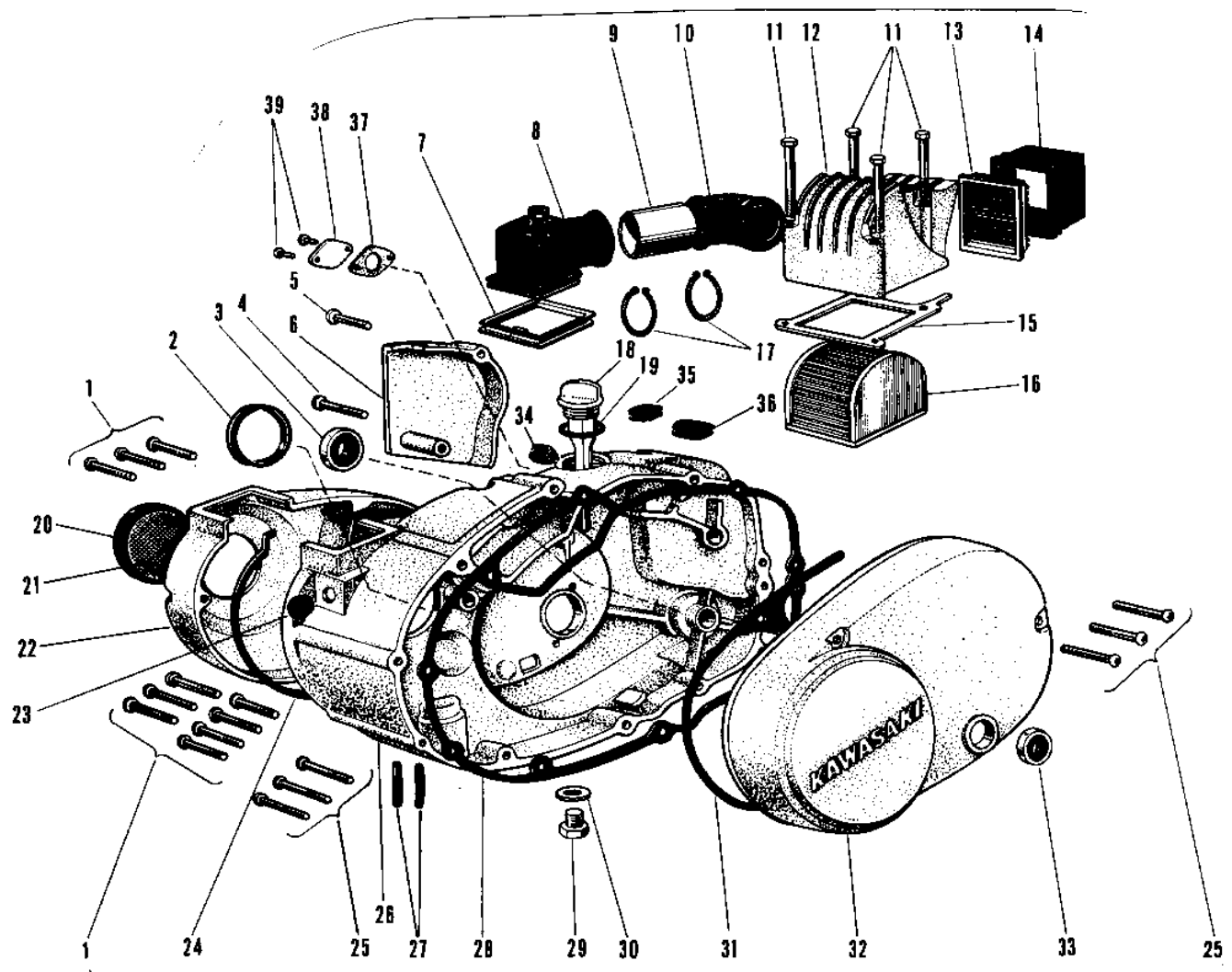


1970 Centurion PARTS DIAGRAM

ENGINE COVERS/AIR CLEANER



1970 Centurion PARTS LIST

ENGINE COVERS/AIR CLEANER

ITEM NAME	PART NUMBER	QUANTITY
SCREW PAN HEAD 6X30 (Ref # 1)	220B0630	10
GROMMET (Ref # 2)	14038-020	1
OIL SEAL TB14257 (Ref # 3)	653B142507	1
SCREW PAN HEAD 6X35 (Ref # 4)	220B0635	1
SCREW PAN HEAD 6X25 (Ref # 5)	220B0625	1
COVER OIL PUMP (Ref # 6)	14030-006	1
HOLDER INLET PIPE (Ref # 7)	11033-002	1
INLET PIPE (Ref # 8)	11015-018	1
INLET PIPE (Ref # 9)	11015-017	1
INLET PIPE (Ref # 10)	11015-016	1
BOLT HEX HEAD 6X75 (Ref # 11)	110B0675	4
COVER AIR CLEANER (Ref # 12)	14042-005	1
SCREEN AIR CLEANER (Ref # 13)	14037-003	1
AIR DUCT (Ref # 14)	14073-002	1
GASKET AIR CLEAN COV (Ref # 15)	14059-001	1
ELEMENT,AIR CLNR (Ref # 16)	11013-018	1
SPRING COIL (Ref # 17)	92081-047	2
FILLER,OIL (Ref # 18)	16115-018	1
"O" RING,OIL FIL PLUG (Ref # 19)	92055-026	1
CAP AIR FILTER RUBBER (Ref # 20)	14060-001	1
FILTER AIR (Ref # 21)	14063-001	2
COVER CARBURETOR (Ref # 22)	14030-016	1
CAP CARB MOUNT HOLE (Ref # 23)	14039-001	1
GASKET CARB COVER (Ref # 24)	14048-001	1
SCREW PAN HEAD 6X45 (Ref # 25)	220B0645	6
UNAVAILABLE IN PRICE BOOK (Ref # 26)	14032-044	1
COVER R.H ENGINE (Ref # 27)	14032-050	1
GUIDE FUEL OVERFLOW (Ref # 27)	16136-002	1
GASKET,CLUTCH COVER (Ref # 28)	11060-1198	1

1970 Centurion PARTS LIST

ENGINE COVERS/AIR CLEANER

ITEM NAME	PART NUMBER	QUANTITY
PLUG OIL DRAIN (Ref # 29)	92067-001	1
GASKET CHECK VALVE (Ref # 30)	92065-058	1
GASKET L.H ENGINE COV (Ref # 31)	14045-007	1
COVER,L.H ENG,SILVER (Ref # 32)	14031-078-75	1
GROMMET OIL PIPE (Ref # 34)	16135-006	1
GROMMET (Ref # 35)	16135-007	1
GROMMET (Ref # 36)	16135-008	1
GASKET,OIL PUMP (Ref # 37)	11060-1160	1
PLUG-OIL PUMP-HOLE (Ref # 38)	92084-004	1
SCREW PAN HEAD 5X8 (Ref # 39)	220B0508	2